

Storz Connections Fig. 09-200 & Fig. 09-230



Specifications

Size and Configuration:

- 4" x 4" Straight Assembly (Body & Cap)
- 5" x 4" Straight Assembly (Body & Cap)
- 4" x 4" 30° Elbow Assembly (Body & Cap)
- 5" x 4" 30° Elbow Assembly (Body & Cap)
- 4" Cap Only W/ Weep Hole (UL)
- 5" Cap Only W/ Weep Hole (UL)
- 5" x 4" Elbow Assem. W/ Tap & Plug (Body & Cap)

Pressure Rating:

250psi (1723.69kPa)

Ambient Temperature:

300°F (145°C) Max

Features

- UL Listed
- NPT Threads per ASME B1.20.1
- Fig. 09-230 5" x 4" Assembly offered with ½" NPT Tap and Plug
- Metal screen ensures debris does not enter the sprinkler system or standpipe system
- Metal face sealing surface on body
- UL Listed Caps have a weep hole to mitigate the risk of unintended system pressurization
- Test Caps may be installed for system testing

Ordering

- Specify description, figure number, size, and configuration



PROJECT INFORMATION	APPROVAL STAMP
Project:	Approved
Address:	Approved as noted
Contractor:	Not approved
Engineer:	Remarks:
Submittal Date:	
Notes 1:	
Notes 2:	

Storz Connections Fig. 09-200 & Fig. 09-230

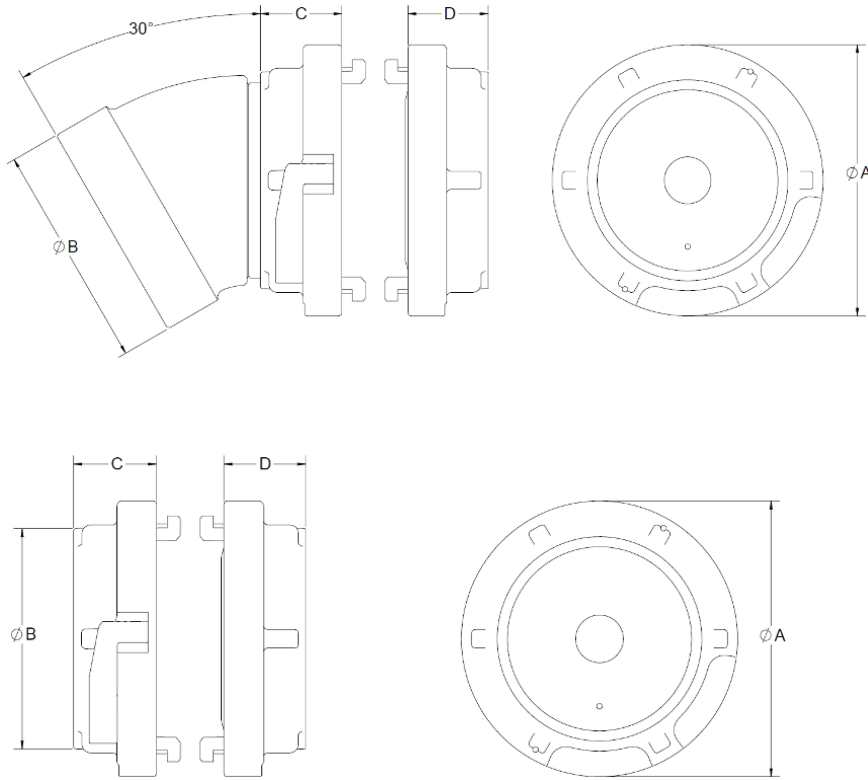


Figure #	Inlet Thread	Storz Size	Configuration	A	B	C	D
09-200	4 FNPT	4"	Straight Body	6.14	4.91	1.84	1.82
09-200	4 FNPT	4"	30° Elbow Body	6.14	5.06	1.84	1.82
-	4 FNPT	4"	Cap	6.14	N/A	N/A	1.82
09-200	4 FNPT	5"	Straight Body	7.71	6.04	1.99	1.93
09-200	4 FNPT	5"	30° Elbow Body	7.71	5.06	1.99	1.93
-	4 FNPT	5"	Cap	7.71	N/A	N/A	1.93
09-230	4 FNPT	5"	30° Elbow Body w/ Tap and Plug	7.71	5.06	1.99	1.93

Storz Connections Fig. 09-200 & Fig. 09-230

Installation Instructions

Connection of the Threaded Inlet

- 1 Inspect both male and female threads prior to assembly. Threads should be free from mechanical damage, dirt, chips, and excess cutting oil. Clean components as necessary.
- 2 Apply pipe dope, sealant, or tape to the male NPT thread.
- 3 Thread the Storz body onto the service pipe. Tighten the assembly wrench-tight by placing the pipe wrench or spanner wrench on the Storz body.
- 4 Typical wrench-tight makeup is 2 full turns past hand-tight. Typical hand-tight makeup is between 5½ to 6¾ turns.

Cap Assembly

- 1 The UL Listed Caps and Test Caps may be assembled to the open face of the Storz body by lining up the male locking slot of the cap and the female locking slot on the body
- 2 A ¼th clockwise turn of the cap should allow the cap and body to lock into place.
- 3 To disassemble, pull the red lever and turn counterclockwise ¼th turn until the cap is free.

Wall Plate

- 1 In Accordance with NFPA 13 and NFPA 14 installation, a wall plate shall identify intended service of the Storz Assembly.
- 2 FPPI 09-507 Wall Plates indicating "AUTO SPRK", "FIRE DEPT CONN", "STANDPIPE", and "STANDPIPE-AUTO SPKR" are available for installation.
- 3 Consideration of applicable local codes shall be given.