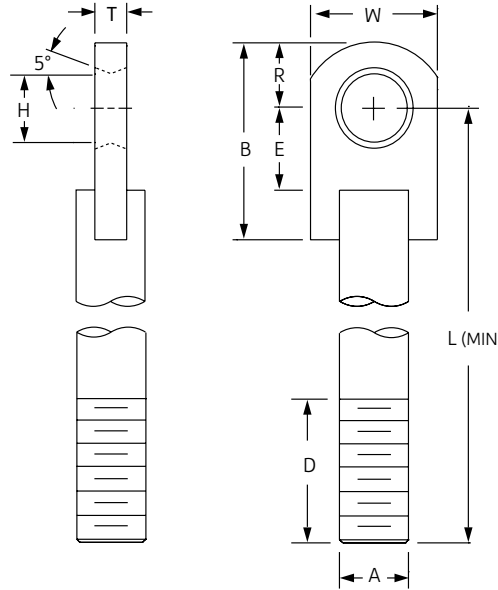


Rod with Eye End Fig. 148



Size Range: 2¾" through 5"

Material: Carbon steel

Finish: Plain or Zinc Plated

Service: A large diameter rod with eye end for load ratings thru 184,000 pounds.

Ordering: Specify rod size, figure number, name, finish and "L" dimension. Indicate if desired thread length is other than standard.

Note: The acceptability of galvanized coatings at temperatures above 450°F is at the discretion of the end user.

Fig. 148: Dimensions (in) • Loads (lbs) • Weight (lbs)

Rod Size A	Max Load		Weight* Min Length	Weight/Ft. Additional Length	B	D	E	H	L (Min)	R	T	W
	650° F	750° F										
2¾	49,400	38,687	35.9	20	9⅝		¾	⅜	19	⅝		
3	60,100	47,066	42.9	24	11	12	4	⅜	20	4	½	6
¾	71,900	56,307	54.7	28	1¼			⅝	21	¼		7
½	84,700	66,331	67.3	33	1½		¾	⅝	24	½		
¾	98,500	77,139	80.0	37	1⅞	15	5	⅞	25	⅞		7½
4	113,400	88,807	97.0	43	1⅝			⅝	26	⅝	2	8½
¼	129,400	101,337	127.0	48	1¾		¼	⅝	30	½		9½
½	146,600	114,807	131.0	54	16	18	¾	⅞		¾		8½
¾	164,700	128,982	154.0	60	17			⅝	31	6	½	9½
5	184,000	144,096	175.0	67	1⅞		¼	⅝	32	⅝		10

*Weight calculated with minimum "L" for standard thread.
 •Furnished with 4 UN series threads.

PROJECT INFORMATION	APPROVAL STAMP
Project:	Approved
Address:	Approved as noted
Contractor:	Not approved
Engineer:	Remarks:
Submittal Date:	
Notes 1:	
Notes 2:	