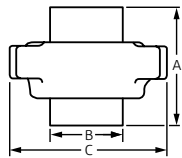
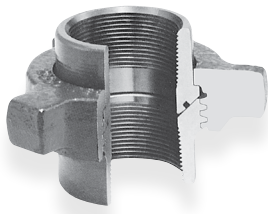


Hammer Unions 2,000 psi cwp – 3,000 psi test Fig. 206HU Threaded Ends Blue Nut/Gray Subs with Seal Ring

Figure 206HU

Threaded Ends
Blue Nut/Gray Subs
with Seal Ring



O-Ring in male sub for improved sealing. NPT thread ends standard.

| Size | | Item | Unit Weight | | A | | B | | C | | TPI | Material | |
|------|-----|----------------|-------------|-------|-------|--------|-------|--------|--------|--------|----------|----------|------|
| NPS | Dn | | lbs | kg | in | mm | in | mm | in | mm | | Nuts | Subs |
| 1 | 25 | Union Complete | 1.75 | 0.79 | 2.670 | 67.82 | 1.640 | 41.66 | 4.065 | 103.25 | 6 STD | SF | SF |
| | | Nut | 0.95 | 0.43 | | | | | | | | | |
| | | Male w/O-Ring | 0.40 | 0.18 | | | | | | | | | |
| | | Female Sub | 0.40 | 0.18 | | | | | | | | | |
| | | O-Ring | - | - | | | | | | | | | |
| 1½ | 40 | Union Complete | 2.75 | 1.25 | 2.770 | 70.36 | 2.250 | 57.15 | 4.750 | 120.65 | 6 STD | SF | SF |
| | | Nut | 1.30 | 0.59 | | | | | | | | | |
| | | Male w/O-Ring | 0.70 | 0.32 | | | | | | | | | |
| | | Female Sub | 0.75 | 0.34 | | | | | | | | | |
| | | O-Ring | - | - | | | | | | | | | |
| 2 | 50 | Union Complete | 4.75 | 2.15 | 3.275 | 83.19 | 2.825 | 71.76 | 5.900 | 149.86 | 4 STD | SF | SF |
| | | Nut | 2.20 | 1.00 | | | | | | | | | |
| | | Male w/O-Ring | 1.15 | 0.52 | | | | | | | | | |
| | | Female Sub | 1.40 | 0.63 | | | | | | | | | |
| | | O-Ring | - | - | | | | | | | | | |
| 3 | 80 | Union Complete | 13.00 | 5.90 | 4.660 | 118.36 | 4.170 | 105.92 | 8.100 | 205.74 | 4 STD | SF | SF |
| | | Nut | 6.00 | 2.72 | | | | | | | | | |
| | | Male w/O-Ring | 3.35 | 1.52 | | | | | | | | | |
| | | Female Sub | 3.50 | 1.59 | | | | | | | | | |
| | | O-Ring | - | - | | | | | | | | | |
| 4 | 100 | Union Complete | 18.70 | 8.48 | 4.910 | 124.71 | 5.075 | 128.91 | 9.060 | 230.12 | 3 MOD | SF | SF |
| | | Nut | 7.40 | 3.36 | | | | | | | | | |
| | | Male w/O-Ring | 5.30 | 2.40 | | | | | | | | | |
| | | Female Sub | 6.00 | 2.72 | | | | | | | | | |
| | | O-Ring | - | - | | | | | | | | | |
| 6 | 150 | Union Complete | 46.10 | 20.91 | 6.610 | 167.89 | 7.410 | 188.21 | 12.800 | 325.12 | 3 STD | SF | SF |
| | | Nut | 18.18 | 8.24 | | | | | | | | | |
| | | Male w/O-Ring | 12.74 | 5.78 | | | | | | | | | |
| | | Female Sub | 15.18 | 6.88 | | | | | | | | | |
| | | O-Ring | - | - | | | | | | | | | |

Warnings:

- Do not make up or break out Unions in pressurized lines.
 - Always use good safety practices, including use of safety glasses, when making up or breaking out Unions.
- TPI = Threads per inch
SF = Steel Forging

| PROJECT INFORMATION | APPROVAL STAMP |
|---------------------|-------------------|
| Project: | Approved |
| Address: | Approved as noted |
| Contractor: | Not approved |
| Engineer: | Remarks: |
| Submittal Date: | |
| Notes 1: | |
| Notes 2: | |

Fig. 206HU Threaded Ends Blue Nut/Gray Subs with Seal Ring



Material

ASTM A29, A105

Full Traceability

All Catawissa Oilfield Hammer Unions are fully traceable and are available with complete mill certifications upon request.

Interchangeability

All Catawissa Oilfield Unions are machined to rigid quality standards ensuring that like components of the same size, figure number and pressure rating are fully interchangeable in the field. Catawissa Oilfield Unions are interchangeable with most leading union manufacturers.

Full Range of End Connections

Catawissa Oilfield Hammer Unions are available in threaded ends, as well as butt weld and non-pressure seal ends. When you choose Catawissa you receive the utmost in quality, the widest selection and unmatched on-time deliveries.



asc-es.com

Building connections that last™

Fig. 206HU Threaded Ends Blue Nut/Gray Subs with Seal Ring

Catawissa Quick Reference Chart

| Standard Service | | | | | | | | | | | | | |
|------------------|--------|--------|----------------|--------|-----------------|-----|-----|----|-----|----|----|----|--|
| Fig. No. | CWP | TEST | API Color Code | | Pipe Size (in.) | | | | | | | | |
| | | | SUB | NUT | 1" | 1¼" | 1½" | 2" | 2½" | 3" | 4" | 6" | |
| 100 | 1,000 | 1,500 | Yellow | Black | | | | | | | | | |
| 200 | 2,000 | 3,000 | Gray | Blue | | | | | | | | | |
| 206 | 2,000 | 3,000 | Gray | Blue | | | | | | | | | |
| 211 | 2,000 | 3,000 | Light Blue | Gray | | | | | | | | | |
| 300 | 2,000 | 3,000 | Yellow | Gray | | | | | | | | | |
| 301 | 3,000 | 4,500 | Green | Black | | | | | | | | | |
| 400 | 4,000 | 6,000 | Red | Black | | | | | | | | | |
| 602 | 6,000 | 9,000 | Orange | Black | | | | | | | | | |
| 607 | 6,000 | 9,000 | Silver | Yellow | | | | | | | | | |
| 1502 | 15,000 | 22,500 | Red | Blue | | | | | | | | | |