

Fig. 20XX-DPS, 20XXDT-DPS, 20XX-DPS-G
Dry Pipe Sprinkler Hose Series



FM Approved Brackets

Bracket Fig # & Size	20XX-DPS & 20XX-DPS-G			20XXDT-DPS
	1"	1¼"	1½"	1"
BKT-DPS 1"	✓			✓
BKT-DPS 1¼"-1½"		✓	✓	
BKT-UHO3	✓			✓
BKT-ADO 16"	✓			✓
BKT-ADO 24"	✓			✓
BKT-ADO 30"	✓			✓
BKT-ADO 48"	✓			✓
BKT-MPO	✓			✓
BKT-MPT	✓			✓

Specifications

Assembly Length

- 24 in (1" 20XX-DPS Only)
- 36 in
- 48 in
- 60 in (1" 20XX-DPS & 20XXDT-DPS Only)
- 72 in

Outlet Drop Size (NPT per ASME B1.20.1)

- 1 FNPT
- 1 FNPT Drain Tee (20XXDT-DPS Only)
- 1¼" FNPT
- 1½" FNPT

Inlet Pipe Type

- MNPT (20XX-DPS & 20XXDT-DPS)
- Grooved (20XX-DPS-G)

Pressure Rating (FM)

175psi (1,205kPa)

Minimum Bend Radius

7.0in (177.8mm)

Ambient Temperature

300°F (145°C) Max

Material

304 Stainless Steel

Features

- 100% Leak Tested Fully Welded Design
- Compliant with NFPA 13, 13R, & 13D
- Wet, Dry, & Pre-Action Sprinkler Systems

Ordering

Specify figure number, length, outlet size, & description.



PROJECT INFORMATION	APPROVAL STAMP
Project:	Approved
Address:	Approved as noted
Contractor:	Not approved
Engineer:	Remarks:
Submittal Date:	
Notes 1:	
Notes 2:	

Fig. 20XX-DPS 1"

Fig. 20XX-DPS 1" FM Approval (Listing) per FM 1637

Outlet Drop Size	Assembly Length	Equivalent Length of NPS 1 (DN25) Sch 40 Pipe					Max # of 90° Bends
		k = 5.6	k = 8.0	k = 11.2	k = 16.8	k = 22.4	
	in/mm	ft/m	ft/m	ft/m	ft/m	ft/m	#
1 NPS DN25	24	18.4	7.7	7.6	7.1	10.7	1
	7.3	5.6	2.3	2.3	2.2	3.3	
	36	26.6	11.5	11.5	10.9	15.1	2
	11.0	8.1	3.5	3.5	3.3	4.6	
	48	30.3	15.3	15.4	14.8	21.5	3
	14.6	9.2	4.7	4.7	4.5	6.6	
	60	35.8	19.1	19.3	18.7	25.3	4
	18.3	10.9	5.8	5.9	5.7	7.7	
	72	45.6	23.0	23.2	22.6	26.9	4
	21.9	13.9	7.0	7.1	6.9	8.2	

1. Equivalent Lengths listed above assume the maximum number of 90° bends.
2. A 90° bend can be achieved with two 45° bends or three 30° bends.
3. FM Equivalent Lengths listed above include the Friction Loss of the Sprinkler.

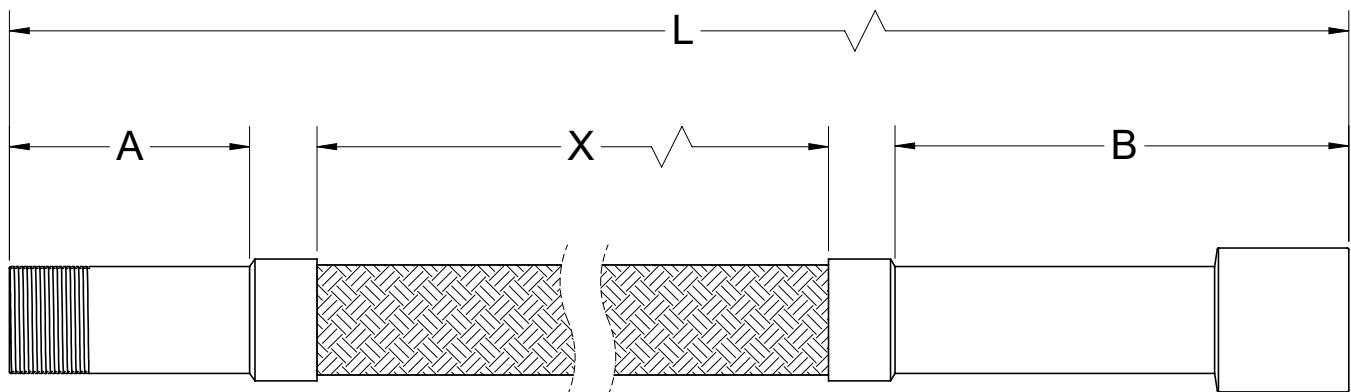


Fig. 20XX-DPS 1" Dimensions & Model Number

Assembly Length	True Length (L)		Braid Length (X)		Inlet Nipple Length (A)		Outlet Drop Length (B)		Flexhead Historical Model Number
in	in	mm	in	mm	in	mm	in	mm	
24	24	610	13.8	351					2024-DPS
36	36	914	25.8	655					2036-DPS
48	48	1219	37.8	960	3.0	76.2	5.6	142.2	2048-DPS
60	60	1524	49.8	1265					2060-DPS
72	72	1829	61.8	1570					2072-DPS

Fig. 20XXDT-DPS 1"

Fig. 20XXDT-DPS 1" FM Approval (Listing) per FM 1637

Outlet Drop Size	Assembly Length	Equivalent Length of NPS 1 (DN25) Sch 40 Pipe					Max # of 90° Bends
		k = 5.6	k = 8.0	k = 11.2	k = 16.8	k = 22.0	
	in/mm	ft/m	ft/m	ft/m	ft/m	ft/m	#
1 NPS DN25	36	8.2	8.6	8.3	8.4	13.5	2
	11.0	2.4	2.6	2.5	2.5	4.1	
	48	12.7	12.9	12.8	12.9	17.8	3
	14.6	3.8	3.9	3.9	3.8	5.4	
	60	17.2	17.2	17.3	17.0	22.1	4
	18.3	5.2	5.2	5.2	5.1	6.7	
	72	21.7	21.6	22.0	21.4	26.6	4
	21.9	6.6	6.5	6.7	6.5	8.1	

1. Equivalent Lengths listed above assume the maximum number of 90° bends.
2. A 90° bend can be achieved with two 45° bends or three 30° bends.
3. FM Equivalent Lengths listed above include the Friction Loss of the Sprinkler.
4. The sprinkler may be installed in the straight or bullhead tee outlet.

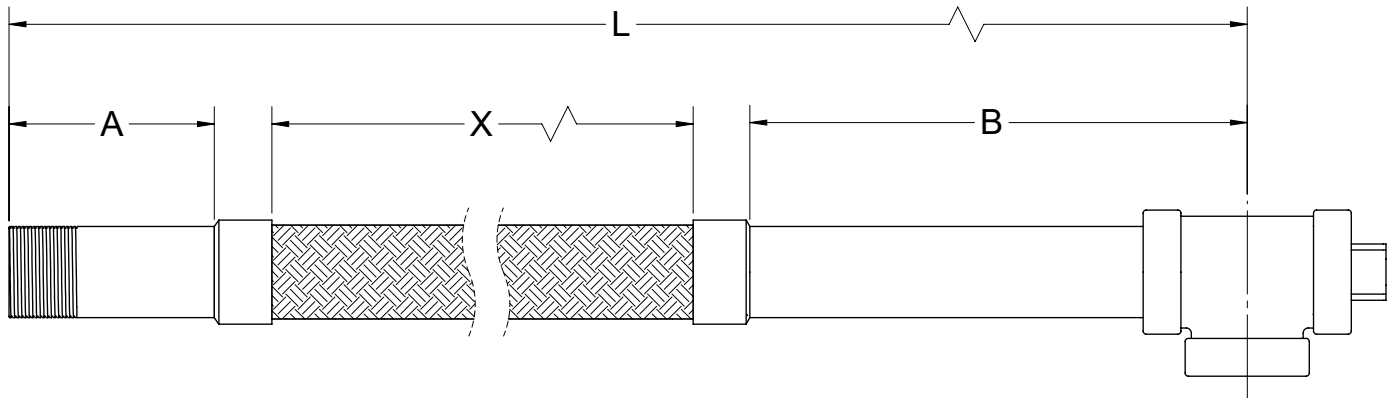


Fig. 20XXDT-DPS 1" Dimensions & Model Number

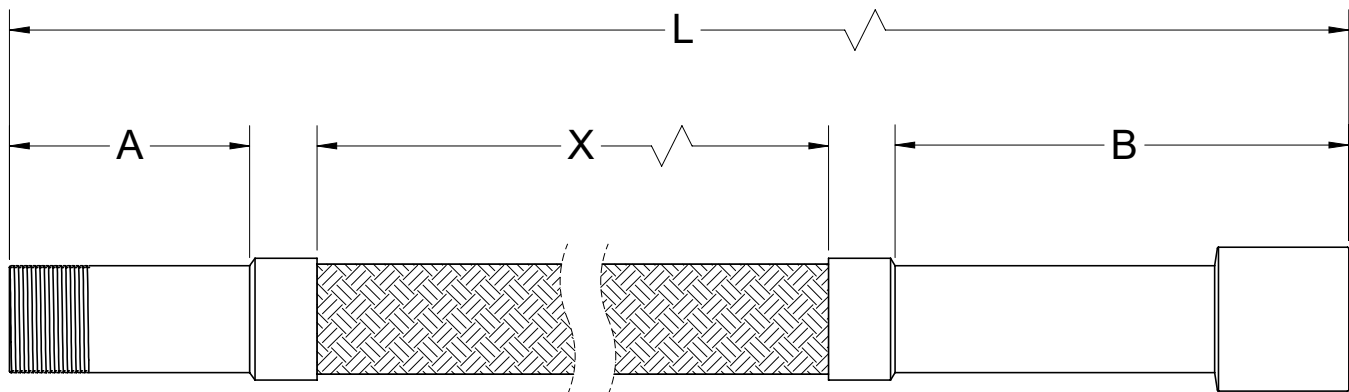
Assembly Length	True Length (L)		Braid Length (X)		Inlet Nipple Length (A)		Outlet Drop Length (B)		Flexhead Historical Model Number
	in	mm	in	mm	in	mm	in	mm	
36	36	914	25.1	638					2036DT-DPS
48	48	1219	37.1	942					2048DT-DPS
60	60	1524	49.1	1247	3.0	76.2	7.2	182.9	2060DT-DPS
72	72	1828	61.1	1552					2072DT-DPS

Fig. 20XX-DPS 1¼" & Fig. 20XX-DPS-G 1¼"

Fig. 20XX-DPS 1¼" & Fig. 20XX-DPS-G 1¼" FM Approval (Listing) per FM 1637

Outlet Drop Size	Assembly Length	Equivalent Length of NPS 1 (DN25) Sch 40 Pipe				Max # of 90° Bends
		k = 11.2	k = 14.0	k = 16.8	k = 22.0	
	in/mm	ft/m	ft/m	ft/m	ft/m	#
1¼ NPS DN32	36	4.77	4.71	4.69	4.75	3
	11.0	1.5	1.4	1.4	1.4	3
	48	6.41	6.34	6.33	6.45	4
	14.6	2.0	1.9	1.9	2.0	4
	72	9.67	9.58	9.59	9.83	4
	21.9	2.9	2.9	2.9	3.0	4

1. Equivalent Lengths listed above assume the maximum number of 90° bends.
2. A 90° bend can be achieved with two 45° bends or three 30° bends.
3. FM Equivalent Lengths listed above include the Friction Loss of the Sprinkler.



Note: 20XX-DPS-G includes a grooved inlet. Not shown in the picture above.

Fig. 20XX-DPS 1¼" & Fig. 20XX-DPS-G 1¼" Dimensions & Model Number

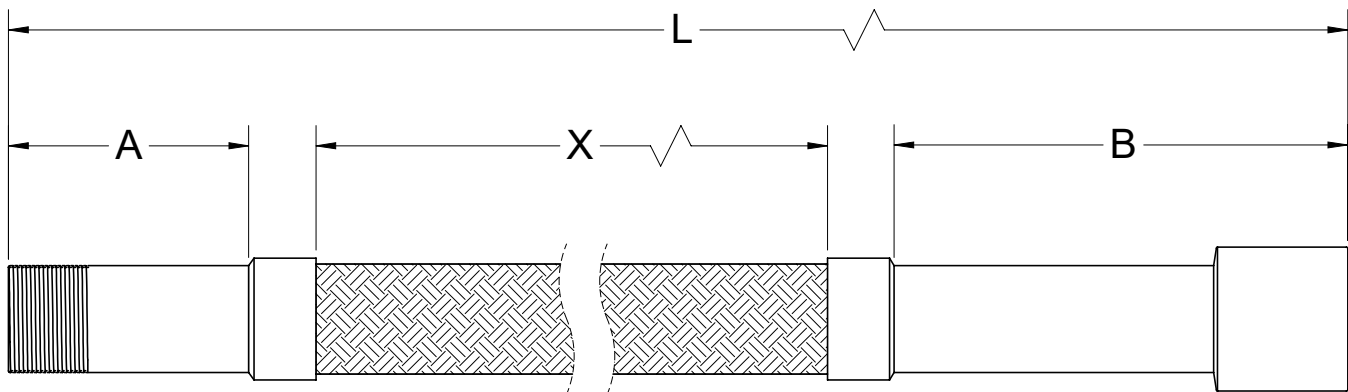
Assembly Length	True Length (L)		Braid Length (X)		Inlet Nipple Length (A)		Outlet Drop Length (B)		Flexhead Historical Model Number
in	in	mm	in	mm	in	mm	in	mm	
36	36	914	25.0	635					2024-DPS
48	48	1219	37.0	940	3.0	76.2	6.4	162.6	2060-DPS
72	72	1829	61.0	1549					2072-DPS

Fig. 20XX-DPS 1½" & Fig. 20XX-DPS-G 1½"

1½" Fig. 20XX-DPS 1½" & Fig. 20XX-DPS-G 1½" FM Approval (Listing) per FM 1637

Outlet Drop Size	Assembly Length	Equivalent Length of NPS 1 (DN25) Sch 40 Pipe				Max # of 90° Bends
		k = 11.2	k = 14.0	k = 16.8	k = 22.0	
	in/mm	ft/m	ft/m	ft/m	ft/m	#
1½ NPS DN40	36	1.62	1.63	1.61	1.65	3
	11.0	0.5	0.5	0.5	0.5	
	48	2.28	2.29	2.26	2.36	4
	14.6	0.7	0.7	0.7	0.7	
	72	3.59	3.60	3.54	3.79	4
	21.9	1.1	1.1	1.1	1.2	

1. Equivalent Lengths listed above assume the maximum number of 90° bends.
2. A 90° bend can be achieved with two 45° bends or three 30° bends.
3. FM Equivalent Lengths listed above include the Friction Loss of the Sprinkler.



Note: 20XX-DPS-G includes a grooved inlet. Not shown in the picture above.

1½" Fig. 20XX-DPS 1½" & Fig. 20XX-DPS-G 1½" Dimensions & Model Number

Assembly Length	True Length (L)		Braid Length (X)		Inlet Nipple Length (A)		Outlet Drop Length (B)		Flexhead Historical Model Number
in	in	mm	in	mm	in	mm	in	mm	
36	36	914	30.5	775					2024-DPS
48	48	1219	42.5	1080	3.0	76.2	3.0	76.2	2060-DPS
72	72	1828	66.5	1690					2072-DPS

Figs. 20XX-DPS, 20XXDT-DPS, 20XX-DPS-G Dry Pipe Sprinkler Hose Series

Installation Instructions

Connection to the Branch (Threaded)

1. Apply pipe sealant or tape to the NPT thread.
2. Install into branch outlet. Tighten the assembly by placing the pipe wrench on the pipe nipple section.
3. **Note:** Only place the pipe wrench on the unthreaded portion of the inlet nipple.

Connection to the Branch (Grooved)

1. Install with branch outlet per grooved coupling installation instructions.

Connection to the Sprinkler Head

1. Installation of the sprinkler head into the outlet drop shall be per the sprinkler manufacturer's installation instructions.

Connection to the Bracket

1. Installation of the hose to the bracket shall be per the bracket's installation instructions. The bracket shall be listed for installation with the 20XX-DPS, 20XXDT-DPS, OR 20XX-DPS-G. See Page 1 for Listed and Approved brackets.

Bending the Hose

1. The hose may be bent to ensure the inlet nipple and outlet drop are in the desired locations.
2. The hose should never be bent to a radius less than minimum listed bend radius. The bend radius is defined to the center of the hose.
3. The hose must have at least one 90° bend. A 90° bend can be achieved with two 45° bends or three 30° bends.
4. For best performance, the bends in the hose should be as large and smooth as possible.

General Installation Notes

1. Never apply a wrench to the braided hose.
2. The Fig 20XX-DPS, 20XXDT-DPS, 20XX-DPS-G may be installed in any direction from the branch.
3. The Bracket may connect to the barrel of the dry pipe sprinkler instead of the outlet drop.