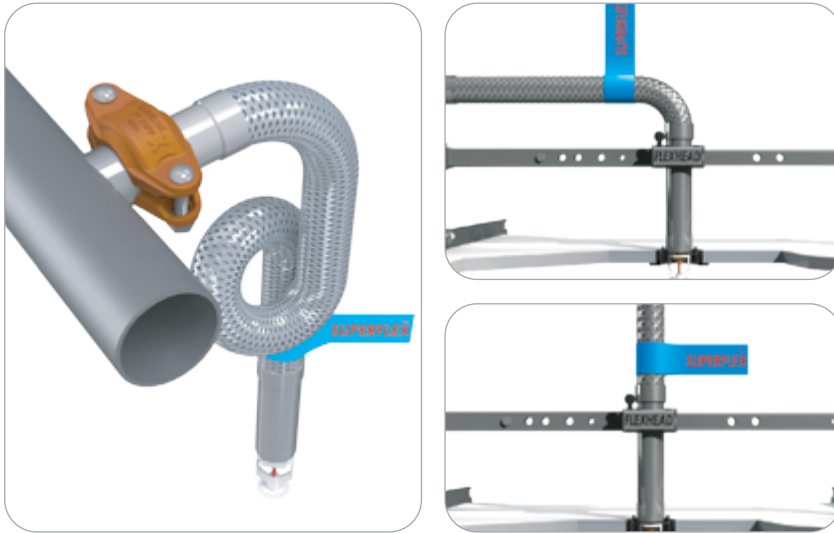


## Fig. 20XXSF–SLT SuperFlex SLT Hose



### Product Specifications

#### Assembly Length

36in                      48in                      72in

#### Outlet Drop Size (NPT per ASME B1.20.1)

½ NPS (DN15)            ¾ NPS (DN20)

#### Inlet Pipe Size

1" SLT w/ FP74 Coupling

#### Pressure Rating

UL: 175 psi (1,205 kPa)  
FM: 175 psi (1,205 kPa)

#### Minimum Bend Radius

UL: 2.0 in (50.8 mm)  
FM: 7.0 in (177.8 mm)

#### Ambient Temperature

300°F (145°C) Max

#### Material

304 Stainless Steel

#### Features

- 100% Leak Tested Fully Welded Design
- Pre-Installed Sprinkler Head option available upon request
- Every hose comes with an easy to identify Blue Tag
- No bend radius inspection required for cULus applications
- Compliant with NFPA 13, 13R, & 13D
- For Wet, Dry, and Pre-Action Sprinkler Systems

#### Ordering

Specify figure number, length, outlet size, and description.

### Fig. 20XXSF–SLT cULus & FM Approved Brackets

Bracket Fig # & Size	cULus Listed	FM Approved	FlexHead Historical Model Number
BKT-MPT	✓	✓	MPT24BKT1
BKT-ADO, 16 in	✓	✓	ADO16BKT3
BKT-ADO, 24 in	✓	✓	ADO24BKT3
BKT-ADO, 30 in		✓	ADO30BKT3
BKT-ADO, 48 in		✓	ADO48BKT3
BKT-UHO3		✓	UHO-3
BKT-TZ		✓	SPO6TZBKT2

**Notes:** Flexhead Historical Model Numbers may be used to verify cULus Listings & FM Approvals.



PROJECT INFORMATION	APPROVAL STAMP
Project:	Approved
Address:	Approved as noted
Contractor:	Not approved
Engineer:	Remarks:
Submittal Date:	
Notes 1:	
Notes 2:	

## Fig. 20XXSF–SLT SuperFlex SLT Hose

Fig. 20XXSF–SLT cULus Listing per UL 2443 & FM Approval (Listing) per FM 1637

Outlet Drop Size	Asembly Length	Equivalent Length						Max # of 90° Bends	
		UL	FM					UL	FM
			k = 5.6	k = 8.0	k = 11.2	k = 14.0	k = 16.8		
	In	ft/m	ft/m	ft/m	ft/m	ft/m	ft/m	#	#
½ NPS DN15	36	30 9.1	16.2 4.9	16.9 5.1	11.5 3.5	-	-	5	2
	48	47 14.3	28.7 8.7	29.3 8.9	15.4 4.7	-	-	8	3
	72	71 21.6	53.9 16.4	54.3 16.5	23.2 7.0	-	-	12	4
¾ NPS DN20	36	29 8.8	-	21.5 6.5	21.6 6.5	21.8 6.6	22.0 6.7	5	2
	48	44 13.4	-	30.5 9.2	30.6 9.3	31.1 9.4	30.8 9.3	8	3
	72	70 21.3	-	48.5 14.7	48.8 14.8	49.9 15.2	48.6 14.8	12	4

1. Equivalent Length of NPS 1 (DN25) Sch 40 Pipe.
2. Equivalent Lengths listed above assume the maximum number of 90° bends.
3. A 90° bend can be achieved with two 45° bends or three 30° bends.
4. UL Equivalent Lengths are listed for installation with sprinklers with a maximum k-factor of 16.8.
5. FM Equivalent Lengths listed above include the Friction Loss of the Sprinkler.
6. UL Listed for "Limited Flexibility".

Fig. 20XXSF-SLT SuperFlex SLT Hose

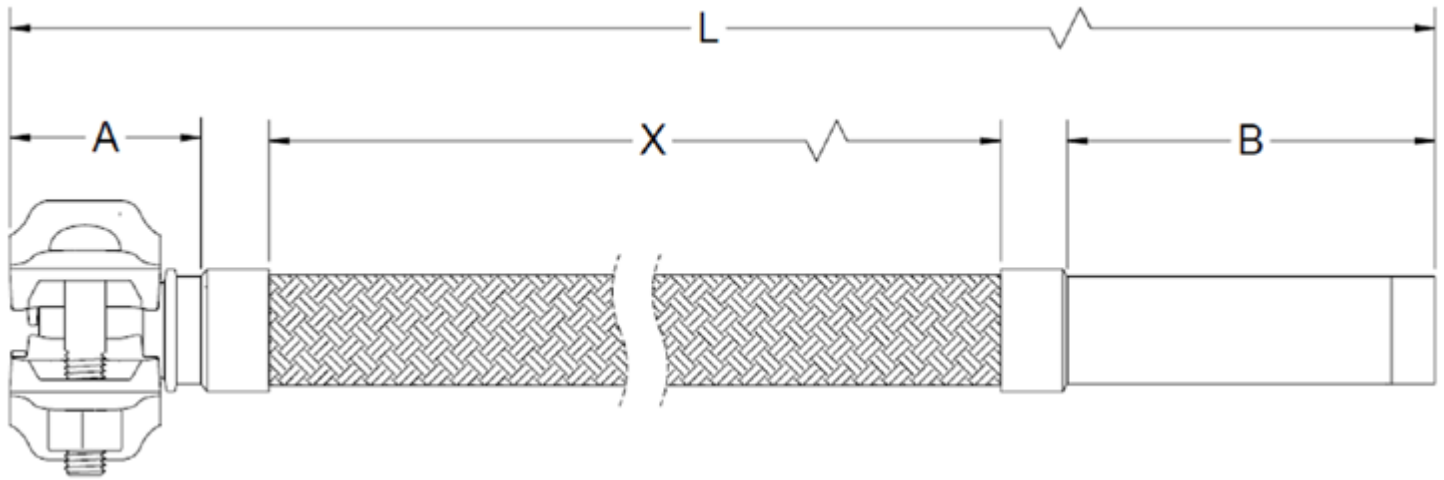


Fig. Dimensions & Model Number

Asembly Length	True Length (L)		Braid Length (X)		Inlet Nipple Length (A)		Outlet Drop Length (B)		FlexHead Historical Model Number	
	in	in mm	in	mm	in	mm	in	mm	½ NPS Outlet	¾ NPS Outlet
36	36	914	27	686					2036SF-SLT-50	2036SF-SLT-75
48	48	1219	39	991	3.0	76.2	6.3	160.0	2048SF-SLT-50	2048SF-SLT-75
72	72	1829	63	1600					2072SF-SLT-50	2072SF-SLT-75

## Fig. 20XXSF–SLT SuperFlex SLT Hose

### Installation Instructions

#### Connection to the Branch

- 1 Slide the 74FP coupling over the grooved end of the outlet until key of the coupling is located over the grooves.
- 2 Tighten nuts equally and alternately (keeping the gaps at the bolt pads evenly spaced), until nuts reach 40–50 ft-lbs.
- 3 **Note:** 74FP installation per 74FP Installation Instructions.

#### Connection to the Sprinkler Head

- 1 Installation of the sprinkler head into the outlet drop shall be per the sprinkler manufacturer's installation instructions.

#### Connection to the Bracket

- 1 Installation of the hose to the bracket shall be per the bracket's installation instructions. The bracket shall be listed for installation with the 20XXSF–SLT. See Page 1 for Listed and Approved brackets.

#### Bending the Hose

- 1 The hose may be bent to ensure the inlet nipple and outlet drop are in the desired locations.
- 2 The hose should never be bent to a radius less than minimum listed bend radius. The bend radius is defined to the center of the hose.
- 3 The hose must have at least one 90° bend. A 90° bend can be achieved with two 45° bends or three 30° bends.
- 4 For best performance, the bends in the hose should be as large and smooth as possible.

#### General Installation Notes

- 1 Never apply a wrench to the braided hose.
- 2 The Fig 20XXSF–SLT may be installed in any direction from the branch.
- 3 If installing a sprinkler to a bracket after installation, it is best practice to prevent twisting of the bracket and hose by holding the outlet drop with a wrench.