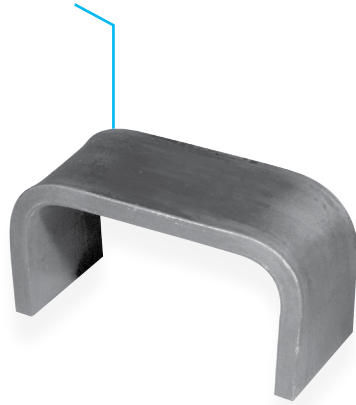


## Pipe Strap – Square Fig. 243



**Size Range:** ½" through 6" pipe

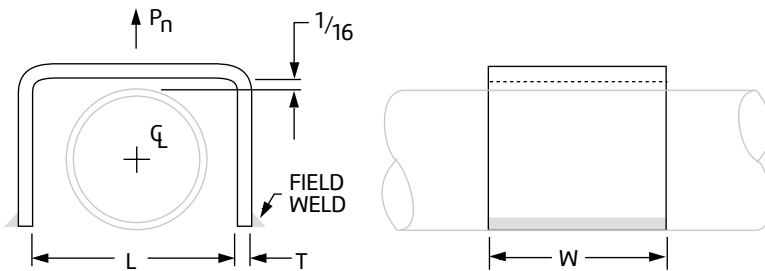
**Material:** Carbon steel

**Finish:** Plain

**Service:** Restraint of pipe in specified direction while permitting movement in non-restrained direction.

**Maximum Temperature:** 650° F

**Ordering:** Specify figure number, name, and pipe size. Larger sizes available upon request.



**Fig. 243: Dimensions (in) • Loads (lbs) • Weight (lbs)**

Pipe Size	L	T	W	Rated Load Pn	Weight
½	3				0.71
¾	3½	¼	2	600	0.84
1	4				0.98
1¼	4½				2.64
1½	5	⅜	3	1,500	2.94
2	5½				3.39
2½	6			2,500	5.20
3	6½	½	4	2,800	7.93
4	7½				9.63
6	9¾		6	3,000	19.97



PROJECT INFORMATION	APPROVAL STAMP
Project:	Approved
Address:	Approved as noted
Contractor:	Not approved
Engineer:	Remarks:
Submittal Date:	
Notes 1:	
Notes 2:	