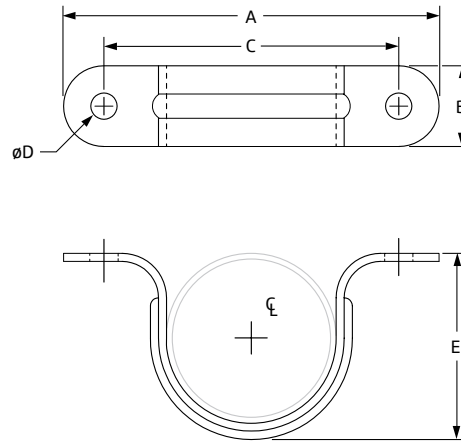


## Light Duty Two Hole Pipe Strap Fig. 266



**Size Range:** 3/8" through 4"

**Material:** Carbon steel,  
Pre-Galvanized

**Ordering:** Specify pipe size,  
figure number, name and finish.

**Note:** Intended for restraint of pipe in  
vertical installations.

**Fig. 266: Dimensions (in) • Weight (lbs)**

Pipe Size	Max Load with Lag Screws	Max Load with Bolt to Steel
1/4	150	205
1/2	150	205
3/4	150	205
1	150	205
1 1/4	159	205
1 1/2	150	205
2	150	205
2 1/2	225	305
3	225	305
4	225	305

Screws or bolts not included.



PROJECT INFORMATION	APPROVAL STAMP
Project:	Approved
Address:	Approved as noted
Contractor:	Not approved
Engineer:	Remarks:
Submittal Date:	
Notes 1:	
Notes 2:	