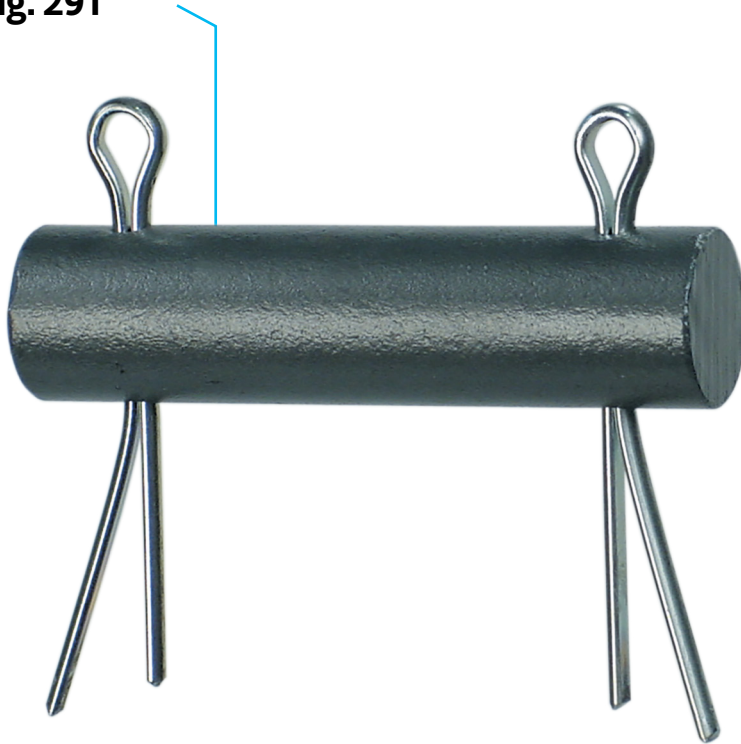


Clevis Pin with Cotters  
**Fig. 291**



**Description**

**Size Range**  
 1/2" through 4"

**Material**  
 Carbon steel

**Finish**  
 Plain or  
 Zinc Plated (Hot-Dip Galvanized optional)

**Maximum Temperature**  
 650° F

**Service**  
 For use with type C variable spring hanger, type C constant support (Fig. 81-H only) and Fig. 66 welded beam attachment.

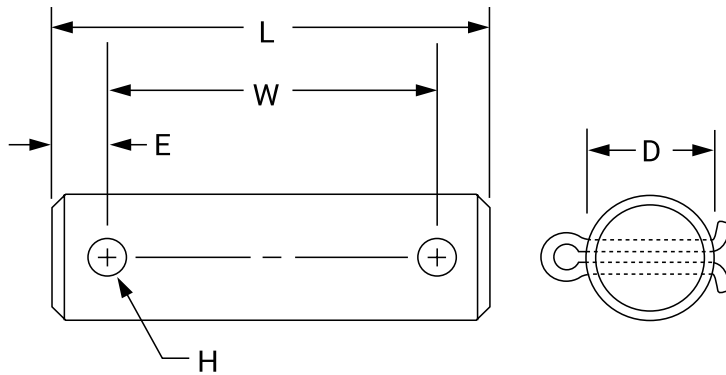
**Ordering**  
 Specify pin diameter, figure number, name, finish and if cotter pins are required.

**Note:** The acceptability of galvanized coatings at temperatures above 450°F is at the discretion of the end user.



PROJECT INFORMATION	APPROVAL STAMP
Project:	Approved
Address:	Approved as noted
Contractor:	Not approved
Engineer:	Remarks:
Submittal Date:	
Notes 1:	
Notes 2:	

## Clevis Pin with Cotters Fig. 291



### Dimensions (In) • Loads (Lbs) • Weights (Lbs)

Pin Dia. D	Max Load		Weight	L	W	E	H	Cotter Pin Size
	650° F	750° F						
1/2	730	572	0.12	2 7/8	2 1/8	3/8	5/32	1/8 X 1 1/4
5/8	1,350	1,057	0.18	3 1/8	2 3/8			
3/4	2,160	1,691	0.29	3 5/8	2 7/8		7/32	3/16 X 1 1/2
7/8	3,230	2,529	0.47	4 1/4	3 1/2			
1	4,480	3,508	0.67	4	3 3/4	1/2	9/32	3/16 X 2
1 1/8	5,900	4,620	1.00	4 3/4	4			
1 3/8	9,500	7,439	2.10	5 3/8	4 3/8		5/8	3/8
1 5/8	13,800	10,805	3.30	6	5			
1 7/8	18,600	14,564	4.80	7 1/8	5 7/8	3/4	1/2	3/8 X 3
2 1/4	24,600	19,262	7.20	7 5/8	6 3/8			
2 1/2	32,300	25,291	9.30	7 7/8	6 5/8		1/2 X 5	
2 3/4	39,800	31,163	12.50	8 1/4	7			
3	49,400	38,680	16.60	8 1/2	7 1/4	1/2	3/8 X 3 1/4	
3 1/4	60,100	47,058	20.00	8 3/4	7 3/4			
3 1/2	71,900	56,298	23.90	9 1/2	8		1/2 X 6	
3 3/4	84,700	66,320	25.10	9 3/4	8 1/4			
4	98,500	77,125	34.80					



asc-es.com

Building connections that last™