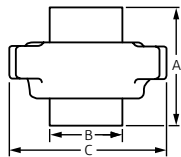
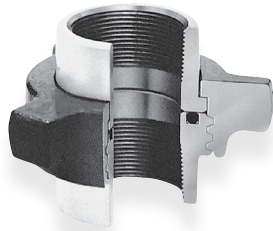


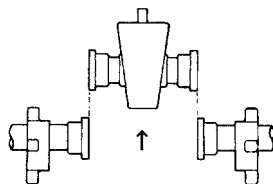
Hammer Unions 2,000 psi cwp – 3,000 psi test Fig. 300HU Flat-Face Union Gray Nut/Yellow Subs

Figure 300HU
Flat-Face Union
Gray Nut/Yellow Subs



“Flat Face” design for straight breakout. Unlike standard unions, spreading of line is not required, allowing quick breakout. The unions seal equally well in low or high pressure liquid or vapor service.

Straight Away Breakout
Flat Face Fig. 300 Unions permit lateral removal of valves and other fittings for easy replacement or inspection.



Size	Item		Unit Weight		A		B		C		Material	
	NPS	Dn	lbs	kg	in	mm	in	mm	in	mm	Nuts	Subs
1	25	Union Complete	2.21	1.00								
		Nut	1.50	0.68								
		Male Sub	0.31	0.14	2.625	66.68	1.560	39.62	4.250	107.95	SF	SF
		Female Sub w/O-Ring	0.50	0.23								
		Seal Ring	-	-								
2	50	Union Complete	6.00	2.72								
		Nut	3.31	1.50								
		Male Sub	1.25	0.57	3.750	95.25	2.780	70.61	5.750	146.05	SF	SF
		Female Sub w/O-Ring	1.44	0.65								
		Seal Ring	-	-								
2½	65	Union Complete	10.88	4.93								
		Nut	6.19	2.81								
		Male Sub	2.13	0.97	4.625	117.48	3.410	86.61	7.000	177.8	SF	SF
		Female Sub w/O-Ring	2.56	1.16								
		Seal Ring	-	-								
3	80	Union Complete	14.25	6.46								
		Nut	6.31	2.86								
		Male Sub	3.50	1.59	5.000	127.00	4.300	109.22	8.000	203.2	SF	SF
		Female Sub w/O-Ring	4.44	2.01								
		Seal Ring	-	-								
4	100	Union Complete	20.69	9.38								
		Nut	8.31	3.77								
		Male Sub	5.57	2.53	5.750	146.05	5.110	129.79	8.875	225.43	SF	SF
		Female Sub w/O-Ring	6.63	3.01								
		Seal Ring	-	-								

Warnings:

- Do not make up or break out Unions in pressurized lines.
- Always use good safety practices, including use of safety glasses, when making up or breaking out Unions.

TPI = Threads per inch • SF = Steel Forging

PROJECT INFORMATION	APPROVAL STAMP
Project:	Approved
Address:	Approved as noted
Contractor:	Not approved
Engineer:	Remarks:
Submittal Date:	
Notes 1:	
Notes 2:	

Fig. 300HU Flat-Face Union Gray Nut/Yellow Subs



Material

ASTM A29, A105

Full Traceability

All Catawissa Oilfield Hammer Unions are fully traceable and are available with complete mill certifications upon request.

Interchangeability

All Catawissa Oilfield Unions are machined to rigid quality standards ensuring that like components of the same size, figure number and pressure rating are fully interchangeable in the field. Catawissa Oilfield Unions are interchangeable with most leading union manufacturers.

Full Range of End Connections

Catawissa Oilfield Hammer Unions are available in threaded ends, as well as butt-weld and non-pressure seal ends. When you choose Catawissa you receive the utmost in quality, the widest selection and unmatched on-time deliveries.



asc-es.com

Building connections that last™

Fig. 300HU Flat-Face Union Gray Nut/Yellow Subs

Catawissa Quick Reference Chart

Standard Service													
Fig. No.	CWP	TEST	API Color Code		Pipe Size (in.)								
			SUB	NUT	1"	1¼"	1½"	2"	2½"	3"	4"	6"	
100	1,000	1,500	Yellow	Black									
200	2,000	3,000	Gray	Blue									
206	2,000	3,000	Gray	Blue									
211	2,000	3,000	Light Blue	Gray									
300	2,000	3,000	Yellow	Gray									
301	3,000	4,500	Green	Black									
400	4,000	6,000	Red	Black									
602	6,000	9,000	Orange	Black									
607	6,000	9,000	Silver	Yellow									
1502	15,000	22,500	Red	Blue									