

Class 150 (Standard) Fig. 3121 Coupling



For Listings / Approval Details and Limitations, visit our website at www.asc-es.com or contact an ASC Engineered Solutions® Sales Representative.

Figure 3121 Coupling

Nominal Size	Dimension A	Approx Wt. Each
In. (mm)	In. (mm)	Lbs. (kg)
1/8 6	0.96 24.38	0.05 0.02
1/4 8	1.06 26.92	0.08 0.04
3/8 10	1.16 29.46	0.12 0.05
1/2 15	1.34 34.04	0.17 0.08
3/4 20	1.52 38.61	0.27 0.12
1 25	1.67 42.42	0.43 0.20
1 1/4 32	1.93 49.02	0.65 0.29
1 1/2 40	2.15 54.61	0.86 0.39
2 50	2.53 64.26	1.35 0.61
2 1/2 65	2.88 73.15	2.33 1.06
3 80	3.18 80.77	3.36 1.52
4 100	3.69 93.73	5.59 2.54
6 150	4.75 120.7	6.94 3.15

Material Specifications

Dimensions:

Fittings: ASME B16.3

Unions: ASME B16.39

Bushings/Plugs: ASME B16.14

Material: ASTM A-197

Finish: Black or Hot Dip Galvanized per ASTM A153 Class A

Threads*: NPT per ASME B1.20.1

Pressure Ratings:

Fittings: ASME B16.3

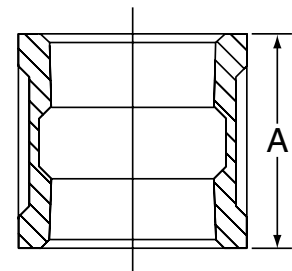
Unions: ASME B16.39

Bushings/Plugs: ASME B16.14

Pressure Testing: All malleable iron fittings are tested for through wall porosity using an air under water process.

Agency Approvals: All malleable iron fittings and unions are UL/ULC Listed and FM Approved.

*British Standard threading per BS 21 available upon request.



PROJECT INFORMATION	APPROVAL STAMP
Project:	Approved
Address:	Approved as noted
Contractor:	Not approved
Engineer:	Remarks:
Submittal Date:	
Notes 1:	
Notes 2:	