

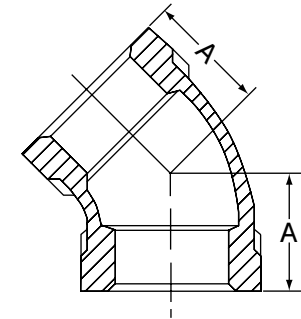
Class 300 (XS/XH) Fig. 3162 45° Elbow



For Listings/Approval Details and Limitations, visit our website at www.asc-es.com or contact an ASC Engineered Solutions Sales Representative.

Figure 3162 45° Elbow

Nominal Size	Dimension A	Approx Wt. Each
In. (mm)	In. (mm)	Lbs. (kg)
1/4 8	0.81 20.57	0.19 0.09
3/8 10	0.88 22.35	0.28 0.13
1/2 15	1.00 25.40	0.43 0.20
3/4 20	1.13 28.70	0.66 0.30
1 25	1.31 33.27	1.00 0.45
1 1/4 32	1.50 38.10	1.70 0.77
1 1/2 40	1.69 42.93	2.10 0.95
2 50	2.00 50.80	3.40 1.54
2 1/2 65	2.25 57.15	5.50 2.49
3 80	2.50 63.50	8.10 3.67
4 100	2.81 71.37	13.00 5.90



Material Specifications

Dimensions:

Fittings: ASME B16.3

Unions: ASME B16.39

Bushings/Plugs: ASME B16.14

Material: ASTM A-197

Finish: Black or Hot Dip Galvanized per ASTM A153 Class A

Threads: NPT per ASME B1.20.1

Pressure Ratings:

Fittings: ASME B16.3

Unions: ASME B16.39

Bushings/Plugs: ASME B16.14

Pressure Testing: All malleable iron fittings are tested for through wall porosity using an air under water process.

Agency Approvals: All malleable iron fittings and unions are UL/ULC Listed and FM Approved.

PROJECT INFORMATION

Project:

Address:

Contractor:

Engineer:

Submittal Date:

Notes 1:

Notes 2:

APPROVAL STAMP

Approved

Approved as noted

Not approved

Remarks: