

Coupling Fig. 3221



For Listings/Approval Details and Limitations, visit our website at www.asc-es.com or contact an ASC Engineered Solutions™ Sales Representative.

Material Specifications

Dimensions: ASME B16.3

Material: ASTM A536 Grade 65-45-12

Finish: Black

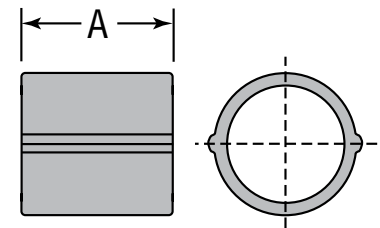
Threads: NPT per ASME B1.20.1

Agency Approvals: All ductile iron threaded fittings are UL/ULC Listed and FM Approved.

Note: Ductile iron fittings have higher tensile strength than that of steel pipe. Therefore, over tightening can cause damage to pipe threads which may cause leakage. Ductile iron fittings should be tightened approximately three turns beyond hand tight, but no more than four turns.

Figure 3221 Coupling

Nominal Size	Maximum Working Pressure ▲	Dimension A	Approx Wt. Each
In. (mm)	psi (kPa)	In. (mm)	Lbs. (kg)
1	500	1.67	0.40
25	3450	42.42	0.18
1¼	500	1.93	0.57
32	3450	49.02	0.26
1½	500	2.15	0.75
40	3450	54.61	0.34
2	500	2.53	1.15
50	3450	64.26	0.52



▲ – Working Pressure Ratings are for reference only and based on Sch. 40 pipe. For the latest UL/ULC, and FM pressure ratings versus pipe schedule, please visit asc-es.com or contact your local ASC Engineering Solutions™ Representative.

PROJECT INFORMATION	APPROVAL STAMP
Project:	Approved
Address:	Approved as noted
Contractor:	Not approved
Engineer:	Remarks:
Submittal Date:	
Notes 1:	
Notes 2:	