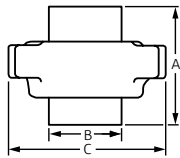
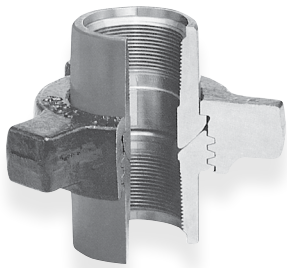


Hammer Unions 4,000 psi cwp – 6,000 psi test Fig. 400HU Threaded Ends Black Nut/Red Subs

Fig. 400HU
Threaded Ends
Black Nut/Red Subs



Ideal for manifold and pumping service.

Size	Item		Unit Weight		A		B		C		TPI	Material		
	NPS	DN	lbs	kg	in	mm	in	mm	in	mm		Nuts	Subs	
2	50	Union Complete		11.05	5.01	5.225	132.72	3.000	76.20	7.125	180.98	3 STD	SF	SF
		Nut		5.60	2.54									
		Male Sub		2.65	1.20									
		Female Sub		2.80	1.27									
3	80	Union Complete		20.00	9.07	6.110	155.19	4.250	107.95	8.750	222.25	3 STD	SF	SF
		Nut		8.50	3.85									
		Male Sub		5.50	2.49									
		Female Sub		6.00	2.72									
4	100	Union Complete		29.15	13.22	8.200	208.28	5.275	133.99	9.160	232.66	3 STD	SF	SF
		Nut		10.15	4.60									
		Male Sub		8.85	4.01									
		Female Sub		10.15	4.60									

Warnings:

- Do not make up or break out Unions in pressurized lines.
 - Always use good safety practices, including use of safety glasses, when making up or breaking out Unions.
- TPI = Threads per inch
SF = Steel Forging

PROJECT INFORMATION	APPROVAL STAMP
Project:	Approved
Address:	Approved as noted
Contractor:	Not approved
Engineer:	Remarks:
Submittal Date:	
Notes 1:	
Notes 2:	

Fig. 400HU Threaded Ends Black Nut/Red Subs



Material

ASTM A29, A105

Full Traceability

All Catawissa Oilfield Hammer Unions are fully traceable and are available with complete mill certifications upon request.

Interchangeability

All Catawissa Oilfield Unions are machined to rigid quality standards ensuring that like components of the same size, figure number and pressure rating are fully interchangeable in the field. Catawissa Oilfield Unions are interchangeable with most leading union manufacturers.

Full Range of End Connections

Catawissa Oilfield Hammer Unions are available in threaded ends, as well as butt weld and non-pressure seal ends. When you choose Catawissa you receive the utmost in quality, the widest selection and unmatched on-time deliveries.



asc-es.com

Building connections that last™

Fig. 400HU Threaded Ends Black Nut/Red Subs

Catawissa Quick Reference Chart

Standard Service												
Fig. No.	CWP	TEST	API Color Code		Pipe Size (in.)							
			SUB	NUT	1"	1¼"	1½"	2"	2½"	3"	4"	6"
100	1,000	1,500	Yellow	Black								
200	2,000	3,000	Gray	Blue								
206	2,000	3,000	Gray	Blue								
211	2,000	3,000	Light Blue	Gray								
300	2,000	3,000	Yellow	Gray								
301	3,000	4,500	Green	Black								
400	4,000	6,000	Red	Black								
602	6,000	9,000	Orange	Black								
607	6,000	9,000	Silver	Yellow								
1502	15,000	22,500	Red	Blue								