

## Concrete Single Lug Plate Fig. 47



### Material Specifications

**Size Range**  
½" through 2"

**Material**  
Carbon Steel

**Finish**  
Plain  
Hot-Dip Galvanized

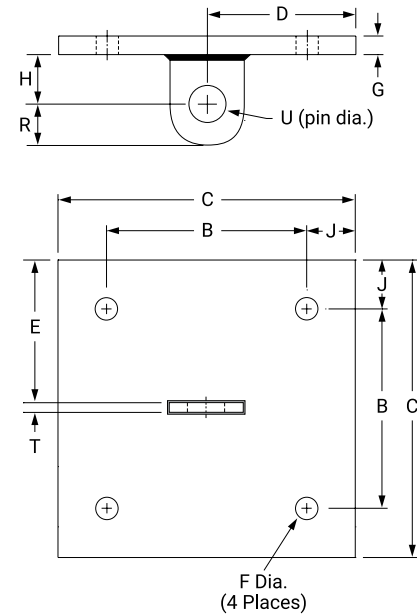
**Service**  
Structural attachment to concrete ceiling lug is used in conjunction with Fig. 299 forged steel clevis and anchors of sufficient strength to hold the desired load.

**Ordering**  
Specify rod size, figure number, name and finish.

Dimensions (In) - Load (Lbs) - Weight (Lbs)

Rod Size A	Max Load ■	Weight	J	B	C	D	E	F	G	H	R	T	U
In.	Lbs.	Lbs.	In.	In.	In.	In.	In.	In.	In.	In.	In.	In.	In.
½	1,350	11.1							¾				⅝
⅝	2,160	14.6	1			5	4 7/8	9/16		1 ½	1 ¼		¾
¾	3,230	14.8			10								7/8
7/8	4,480	22.0					4 13/16	11/16				3/8	1
1	5,900	31.9		8			5 3/4	13/16	¾	2	1 ½	½	1 ½
1 ¼	9,500	43.8					5 11/16	15/16			2	5/8	1 3/8
1 ½	13,800	45.6	2		12	6		1 ⅞		3			1 5/8
1 ¾	18,600	55.7					5 5/8	1 3/8	1 ¼		2 ½	¾	1 7/8
2	24,600	58.2								4	3		2 ¼

**Note:**  
■ Based on the rod diameter only. Rating is subject to the conditions that the concrete and anchors used are of sufficient strength to hold the load.



PROJECT INFORMATION	APPROVAL STAMP
Project:	Approved
Address:	Approved as noted
Contractor:	Not approved
Engineer:	Remarks:
Submittal Date:	
Notes 1:	
Notes 2:	