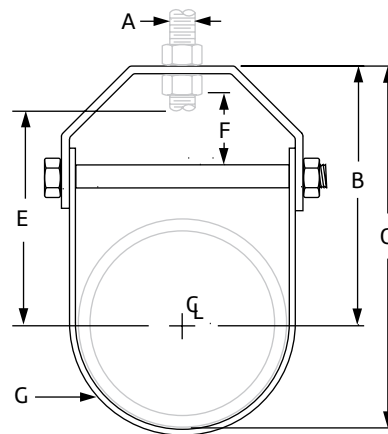


Light Duty Adjustable Clevis Fig. 65



Size Range: ½" through 4"

Material: Carbon steel

Finish: Plain or Zinc Plated
(Hot-Dip Galvanized optional)

Service: Recommended for suspension of stationary pipe or conduit. Complies with ANSI/MSS SP-58 (Type 1).

Maximum Temperature: Plain 650° F, Galvanized and Epoxy 450° F

Approvals: Complies with Federal Specification WW-H-171-E (Type 12). Complies with ANSI/MSS SP-58 (Type 1).

Installation: Hanger load nut above the clevis must be tightened securely to assure proper hanger performance.

Adjustment: Vertical adjustment is provided, varying with the size of clevis. Tighten upper nut after adjustment.

Features: An economical attachment for light duty service.

Ordering: Specify pipe size, figure number, name and finish.

Metric nut available upon request.

Caution: When an oversize clevis is used, a pipe spacer or multispace should be placed over clevis bolt to ensure that the lower U-strap will not move in on the bolt.

Fig. 65: Dimensions (in) • Loads (lbs) • Weight (lbs)

Pipe Size	Max Load	Weight	Rod Size A	B	C	Rod Take Out E	Adjustment F	G Width Lower
½	150	0.10	¾	1 11/16	2 3/32	1 ¼	7/16	5/8
¾		0.17		1 7/8	2 13/32	1 7/16	½	
1		0.18		2 5/32	2 13/16	1 11/16	5/8	
1 ¼	250	0.21		2 17/32	3 3/8	2 1/16	13/16	
1 ½		0.24		2 13/16	3 13/16	2 3/8	15/16	
2		0.26		3 11/32	4 17/32	2 7/8	1 3/16	¾
2 ½		0.50		3 27/32	5 9/32	3 ¼	1 5/16	
3	350	0.59		4 15/32	6 7/32	3 7/8	1 5/8	
3 ½		0.62		4 31/32	6 31/32	4 3/8	1 7/8	
4	400	0.77		5 17/32	7 25/32	4 15/16	2 1/8	

PROJECT INFORMATION	APPROVAL STAMP
Project:	Approved
Address:	Approved as noted
Contractor:	Not approved
Engineer:	Remarks:
Submittal Date:	
Notes 1:	
Notes 2:	