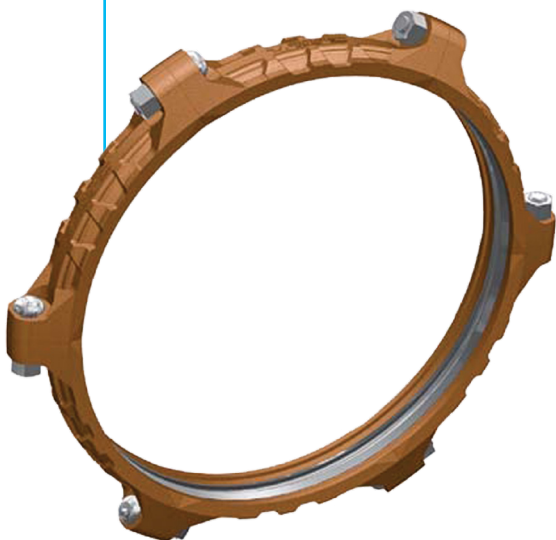


Weld Ring Gruv-Ring® Coupling Fig. 7022



The Gruvlok Figure 7022 coupling with Gruv-Ring forms a flexible grooved end pipe joint for use on steel pipe. Services for this versatile connection include large O.D. mining applications such as process, tailings and slurries. The coupling's multi-segment design supplies optimum strength for working pressures to 175 PSF.

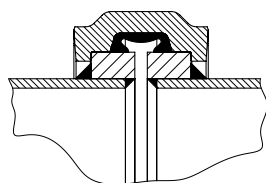


Fig. 7022 with Type C Ring

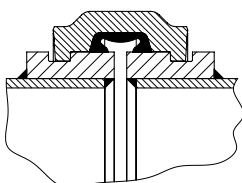


Fig. 7022 with Type D Ring

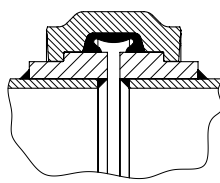


Fig. 7022 with Type E Ring

Material Specifications

BoltsM

SAE J429, Grade 5, Zinc Electroplated

Heavy Hex Nuts

ASTM A563, Grade A, Zinc Electroplated

Stainless Steel Bolts & Nuts

304SS bolts and nuts are available as a standard option.

(316SS are available for special order).

Material Specifications (continued)

Housing

Ductile Iron conforming to ASTM A536, Grade 65-45-12

Coatings

- Rust inhibiting paint
- Color: Orange (standard)
- Hot Dipped Zinc Galvanized (optional)
- Other Colors Available (IE: RAL3000 and RAL9000)

For other Coating requirements contact an ASC Engineered Solutions™ Representative.

Gasket Materials

Properties as designated in accordance with ASTM D2000

- Grade "E" EPDM** (Green color code)
- 40°F to 230°F (Service Temperature Range)
- (-40°C to 110°C)

Recommended for water service, diluted acids, alkalis solutions, oil-free air and many other chemical services.

NOT FOR USE IN PETROLEUM APPLICATIONS.

- Grade "T" Nitrile** (Orange color code)
- 20°F to 180°F (Service Temperature Range)
- (-29°C to 82°C)

Recommended for petroleum applications, air with oil vapors and vegetable and mineral oils.

NOT FOR USE IN HOT WATER OR HOT AIR

Gasket Type

C Style cross section featuring an enhanced larger cross section to provide optimal sealing throughout the range of pipe dimensional variations and operating conditions.

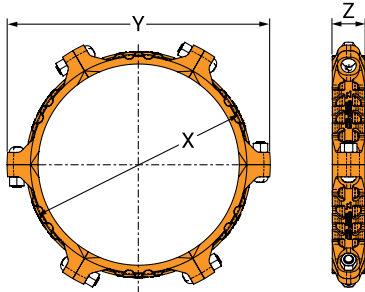
Lubrication

- Standard
- Gruvlok Xtreme



PROJECT INFORMATION	APPROVAL STAMP
Project:	Approved
Address:	Approved as noted
Contractor:	Not approved
Engineer:	Remarks:
Submittal Date:	
Notes 1:	
Notes 2:	

Weld Ring Gruv-Ring® Coupling Fig. 7022



Nominal Size	Pipe O.D. Range	Applied Gruv-Ring O.D.	Max. Working Pressure	Max. End Load	Range of Pipe End Separation	Deflection from ϕ Per Coupling		Coupling Dimensions			No. of Segments	Coupling Bolts		Approx. Wt. per Segment	Total Assembly Weight
						Degrees(°)	In./ft-mm/n	X	Y	Z		Qty.	Size		
In.	In./mm	In./mm	PSI/kPa	Lbs./N	In./mm			In./mm	In./mm	In./mm			In./mm	Lbs./kg	Lbs./kg
30	28.00-32.00 711.2-812.8	33.75 857	175 1207	156,558 696,405	0-1/2 0-12.7	0.85	0.18 15.0	37.00 940	43.25 1099	5.375 137	6	6	1 1/2 x 5 3/4	42 19.1	250 113.4
36	34.00-38.00 863.6-965.2	40.19 1021	175 1207	221,978 987,407	0-1/2 0-12.7	0.72	0.15 12.5	43.47 1104	50.00 12.70	5.375 137	6	6	1 1/2 x 5 3/4	48 21.8	290 131.5
42	40.00-44.00 1,016.0-1,117.6	46.63 1184	175 1207	298,790 1,329,084	0-1/2 0-12.7	0.62	0.12 10.0	49.84 1266	56.50 1435	5.375 137	8	8	1 3/4 x 6	46 20.8	345 156.5
48	46.00-50.00 1,168.4-1,270.0	53.13 1350	175 1207	387,905 1,725,488	0-1/2 0-12.7	0.53	0.11 9.2	57.16 1452	62.50 1588	5.500 140	8	16	1 3/8 x 5 3/4	73 32.9	580 263.1
54	52.00-56.00 1,320.8-1,422.4	59.69 1516	175 1207	489,660 2,178,116	0-1/2 0-12.7	0.48	0.10 8.3	63.60 1615	69.28 1760	5.625 143	8	16	1 1/2 x 5 3/4	81 36.7	650 294.8
60	58.00-64.00 1,473.2-1,625.6	66.19 1681	175 1207	602,116 2,678,346	0-1/2 0-12.7	0.43	0.09 7.5	70.00 1778	75.71 1923	5.750 146	10	20	1 1/2 x 5 3/4	76 34.3	750 340.2

Note:

Impact gun can be used for installation, verify that the output of the impact gun is within the required torque range.

For additional details see "Coupling Data Chart Notes" in the Introduction Section of the Gruvlok Catalog.

For additional Bolt Torque information, contact an ASC Engineered Solutions™ Representative.



asc-es.com

Building connections that last™

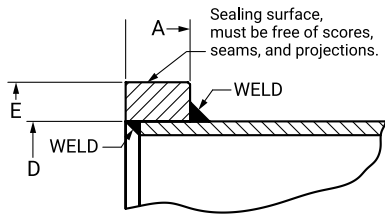
Gruv-Ring® Welded Shoulder Rings For use with **Fig. 7022 Couplings**

Material Specifications

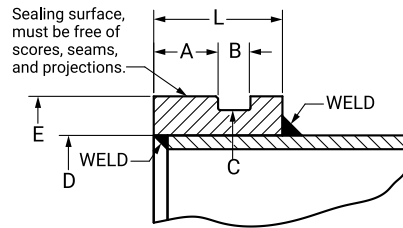
Material

ASTM A105

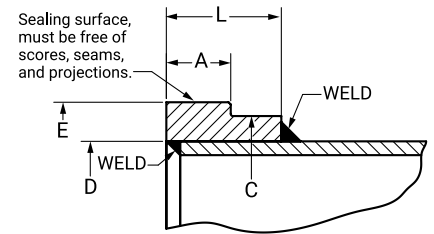
Additional material options available upon request.



D - Ring I.D. based on Pipe O.D. Dimensions.



D - Ring I.D. based on Pipe O.D. Dimensions.



D - Ring I.D. based on Pipe O.D. Dimensions.

Gruv-Ring Type C

Size	Gasket Seat		Ring O.D.
	A	E	
In./mm	In./mm	In./mm	
30	1.75	33.75	
750	44.5	857.3	
36	1.75	40.19	
900	44.5	1020.8	
42	1.75	46.63	
1050	44.5	1184.3	
48	1.75	53.13	
1200	44.5	1349.4	
54	1.75	59.69	
1375	44.5	1516.1	
60	1.75	66.19	
1500	44.5	1681.2	

Gruv-Ring Type D

Size	Gasket Seat	Groove Width	Groove Diameter	Ring O.D.		Ring Width
				E	L	
In./mm	In./mm	In./mm	In./mm	In./mm	In./mm	In./mm
30	1.75	0.88	33.00	33.75	3.50	
750	44.5	22.2	838.2	857.3	88.9	
36	1.75	0.94	39.44	40.19	3.50	
900	44.5	23.8	1001.7	1020.8	88.9	
42	1.75	1.00	45.81	46.63	3.62	
1050	44.5	25.4	1163.6	1184.3	91.9	
48	1.75	1.06	52.19	53.13	3.88	
1200	44.5	27.0	1349.4	1349.4	98.4	
54	1.75	1.13	58.63	59.69	3.88	
1375	44.5	28.6	1489.1	1516.1	98.4	
60	1.75	1.13	65.06	66.19	3.88	
1500	44.5	28.6	1652.6	1681.2	98.4	

Gruv-Ring Type E

Size	Gasket Seat	Groove Diameter	Ring O.D.		Ring Width
			E	L	
In./mm	In./mm	In./mm	In./mm	In./mm	In./mm
30	1.75	33.00	33.75	3.50	
750	44.5	838.2	857.3	88.9	
36	1.75	39.44	40.19	3.50	
900	44.5	1001.7	1020.8	88.9	
42	1.75	45.81	46.63	3.62	
1050	44.5	1163.6	1184.3	91.9	
48	1.75	52.19	53.13	3.88	
1200	44.5	1349.4	1349.4	98.4	
54	1.75	58.63	59.69	3.88	
1375	44.5	1489.1	1516.1	98.4	
60	1.75	65.06	66.19	3.88	
1500	44.5	1652.6	1681.2	98.4	

Note:

Gruv-Rings are not to be considered as pipe reinforcement. Additional provision must be provided by the piping system designer if reinforcement is required.



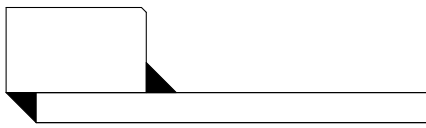
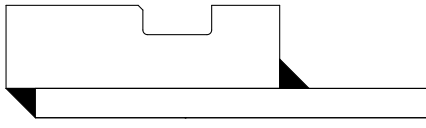
asc-es.com

Building connections that last™

Gruv-Ring® Welded Shoulder Rings For use with **Fig. 7022 Couplings**

When ordering, please provide the required information below to your ASC Engineered Solutions™ Representative.

JOINT TYPE		
Pipe to Pipe (Two Rings Required)		
Pipe to Shoulder (One Ring Required)		
APPLICATION		
Fluid Media:		
Working Pressure:		
Test Pressure:		
Temperature:	Minimum:	Maximum:
PIPE SPECIFICATION		
Pipe Material:		
Nominal Pipe Size:		
Measured Pipe OD:		
Pipe Schedule:		
Wall Thickness:		
COUPLING CONFIGURATION		
Size:		
Number of Joints:		
Gasket Materials:		
Grade "E" EPDM (Green color code)		
Grade "T" Nitrile (Orange color code)		
Coupling Finish:		
Rust inhibiting paint – Color: Orange (standard)		
Hot Dipped Zinc Galvanized (optional)		
Other Colors Available (IE: RAL3000 and RAL9000)		
LINED PIPE (optional)		
Abrasive		
Corrosive		
Lined Thickness:		
Lined Material:		

Gruv-Ring Type
Type C

Type D

Type E
