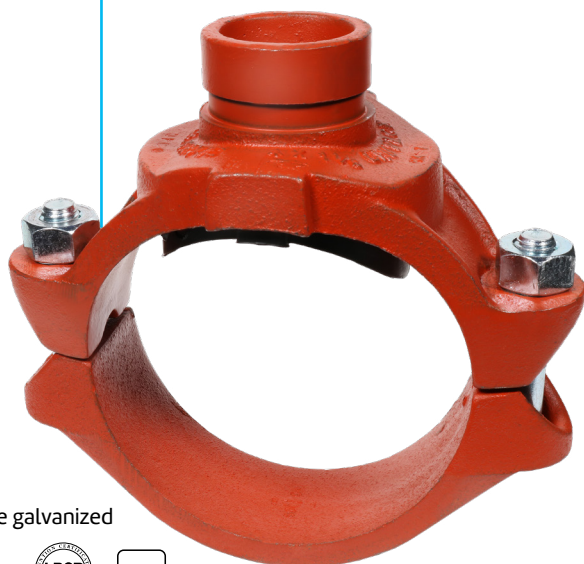


Clamp-T, Grooved Branch Fig. 7046FP



 - Available galvanized



The Gruvlok Clamp-T provides a quick and easy outlet at any location along the pipe. A hole drilled or cut in the pipe to receive the locating collar of the Clamp-T is all that is required. The full, smooth outlet area provides for optimum flow characteristics.

The Clamp-T housing is specially engineered to conform to the pipe O.D. and the Clamp-T gasket providing a leak tight reliable seal in both positive pressure and vacuum conditions. The maximum working pressure for all sizes is 500 PSI (34.5 bar) when assembled on standard wall steel pipe. For the latest UL/ULC listed, LPCB, VdS and FM Approved pressure ratings versus pipe schedule, see www.asc-es.com or contact your local ASC Engineered Solutions™ Representative.

The Gruvlok Clamp-T provides for a branch or cross connection in light wall or standard wall steel pipe.

Clamp-T cross connections are available in most sizes allowing greater versatility in piping design.

For Listings/Approval Details and Limitations, visit our website at www.asc-es.com or contact an ASC Engineered Solutions Sales Representative.

Material Specifications

Housing

Ductile Iron conforming to ASTM A536, Grade 65-45-12

ANSI Bolts & Heavy Hex Nuts

Heat treated, oval neck track head bolts conforming to ASTM A183 Grade 2 with a minimum tensile strength of 110,000 psi and heavy hex nuts of carbon steel conforming to ASTM A563 Grade A or Grade B, or J995 Grade 2. Bolts and nuts are provided zinc electroplated as standard.

Metric Bolts & Heavy Hex Nuts

Heat treated, zinc electroplated oval-neck track head bolts made of carbon steel with mechanical properties per ISO 898-1 Class 8.8. Hex nuts and bolts are zinc electroplated followed by a yellow chromate dip.

U-Bolt

Cold drawn steel and zinc plated.

Coatings

- Rust inhibiting paint
- Color: Orange (Standard)
- Hot Dipped Zinc Galvanized (Optional)
- Other Available Options
(Example: RAL3000 or RAL9000 Series)

For other Coating requirements contact an ASC Engineered Solutions Representative.

Lubrication

- Standard Gruvlok
- Gruvlok Xtreme required for dry pipe systems and freezer applications

Gasket Materials

Properties as designated in accordance with ASTM D2000.

- Grade "E" EPDM** (Green color code)
- 40°F to 230°F (Service Temperature Range)
- (-40°C to 110°C)

Recommended for water service, diluted acids, alkalies solutions, oil-free air and many chemical services.

NOT FOR USE IN PETROLEUM APPLICATIONS.

- Grade "EP" EPDM** (Green and Red color code)
- 40°F to 250°F (Service Temperature Range)
- (-40°C to 121°C)

Recommended for water service, diluted acids, alkalies solutions, oil-free air and many other chemical services.

NOT FOR USE IN PETROLEUM APPLICATIONS.



PROJECT INFORMATION	APPROVAL STAMP
Project:	Approved
Address:	Approved as noted
Contractor:	Not approved
Engineer:	Remarks:
Submittal Date:	
Notes 1:	
Notes 2:	

Clamp-T, Grooved Branch Fig. 7046FP

Clamp-T Flow Data (Frictional Resistance)

Branch Size	Fig. 7046 Grooved Branch	
	C.V. Value	Equiv. Pipe Length
In./DN(mm)		Ft./m
1¼	5.4	5.0
32	–	1.5
1½	95	3.5
40	–	1.1
2	148	4.5
50	–	1.4

Branch Size	Fig. 7046 Grooved Branch	
	C.V. Value	Equiv. Pipe Length
In./DN(mm)		Ft./m
2½	205	7.0
65	–	2.1
3	294	9.5
80	–	2.9
4	571	7.0
100	–	2.1



asc-es.com

Building connections that last™

Clamp-T, Grooved Branch Fig. 7046FP

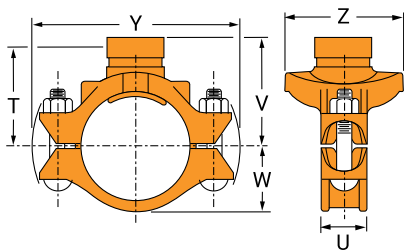


Fig. 7046

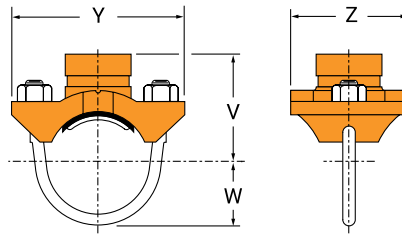


Fig. 7046 (U-Bolt)

WARNING

For dry pipe systems and freezer applications lubrication of the gasket is required, Gruvlok Xtreme Lubricant is required.

Nominal Size	O.D.	Hole Dimensions		Max. Working Pressure ^s	Clamp-T Dimensions					Bolt* Size	Specified Torque §		Approx. Wt. Ea.
		Min. Diam.	Max. Diam.		U	V Grooved	W	Y	Z		Min.	Max.	
In./DN(mm)	In./mm	In./mm	In./mm	PSI/bar	In./mm	In./mm	In./mm	In./mm	In./mm	In./mm	Ft.-Lbs./N-m	Ft.-Lbs./N-m	Lbs./kg
2½ x 1¼ 65 x 32	2.875 x 1.660 73.0 x 42.4	2 51	2⅞ 54	500 34.5	⅞ 14	3⅞ 79	1¾ 44	6⅞ 156	3½ 89	½ U-Bolt —	30	40	3.4 1.5
2½ x 1½ 65 x 40	2.875 x 1.900 73.0 x 48.3	2 51	2⅞ 54	500 34.5	⅞ 14	3⅞ 79	1¾ 44	6⅞ 156	3½ 89	½ U-Bolt —	30	40	3.4 1.5
3 x 1¼ 80 x 32	3.500 x 1.660 88.9 x 42.4	2 51	2⅞ 54	500 34.5	1½ 38	3½ 89	2⅞ 54	6⅞ 175	3¾ 95	½ x 2¾ —	80	100	3.4 1.5
3 x 1½ 80 x 40	3.500 x 1.900 88.9 x 48.3	2 51	2⅞ 54	500 34.5	1½ 38	3½ 89	2⅞ 54	6⅞ 175	3¾ 95	½ x 2¾ —	80	100	4.4 2.0
3 x 2 80 x 50	3.500 x 2.375 88.9 x 60.3	2½ 64	2⅞ 67	500 34.5	1½ 38	3½ 89	2⅞ 54	6⅞ 175	4⅞ 105	½ x 2¾ —	80	100	4.6 2.1
4 x 1¼ 100 x 32	4.500 x 1.660 114.3 x 42.4	2 51	2⅞ 54	500 34.5	1⅞ 48	4 102	2⅞ 67	7½ 191	3¾ 95	½ x 2¾ —	80	100	4.2 1.9
4 x 1½ 100 x 40	4.500 x 1.900 114.3 x 48.3	2 51	2⅞ 54	500 34.5	1⅞ 48	4 102	2⅞ 67	7½ 191	3¾ 95	½ x 2¾ —	80	100	4.3 2.0
4 x 2 100 x 50	4.500 x 2.375 114.3 x 60.3	2½ 64	2⅞ 67	500 34.5	1⅞ 48	4 102	2⅞ 67	7½ 191	4⅞ 105	½ x 2¾ —	80	100	4.6 2.1
4 x 2½ 100 x 65	4.500 x 2.875 114.3 x 73.0	2¾ 70	2⅞ 73	500 34.5	1⅞ 48	4 102	2⅞ 67	7½ 191	4¾ 111	½ x 2¾ —	80	100	5.0 2.3

Note:

2½", 5" and 6" Nominal size run pipe may be used on 3" O.D., 5½" O.D. and 6½" O.D. pipe.

* All bolts and nuts are of track head design and are zinc plated conforming to ASTM B633.

s – Working Pressure Ratings are for reference only and based on Sch. 40 pipe. For the latest UL/UCL, FM, VdS and LPCB pressure ratings versus pipe schedule, please visit www.asc-es.com or contact your local ASC Engineered Solutions™ Representative.

§ – For additional Bolt Torque information see Technical Data Section.

• Can not be used in cross configuration.

Not for use in copper systems.



asc-es.com

Building connections that last™

Clamp-T, Grooved Branch Fig. 7046FP

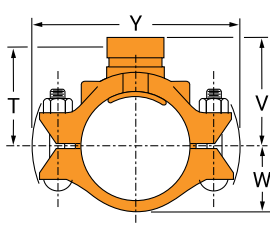


Fig. 7046

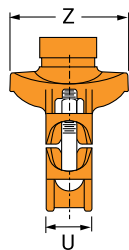
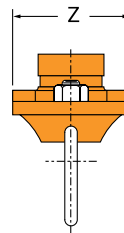
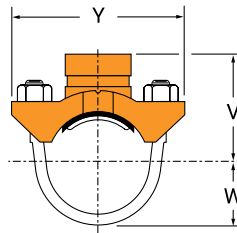


Fig. 7046 (U-Bolt)



WARNING

For dry pipe systems and freezer applications lubrication of the gasket is required, Gruvlok Xtreme Lubricant is required.

Nominal Size	O.D.	Hole Dimensions		Max. Working Pressure ^s	Clamp-T Dimensions					Bolt* Size	Specified Torque §		Approx. Wt. Ea.
		Min. Diam.	Max. Diam.		U	V Grooved	W	Y	Z		Min.	Max.	
In./DN(mm)	In./mm	In./mm	In./mm	PSI/bar	In./mm	In./mm	In./mm	In./mm	In./mm	In./mm	Ft.-Lbs./N-m	Ft.-Lbs./N-m	Lbs./kg
4 x 3 O.D. 100 x 80	4.500 x 2.996 114.3 x 76.1	2¾ 70	2⅞ 73	500 34.5	1⅞ 48	4 102	2⅝ 67	7½ 191	4⅜ 111	½ x 2¾ —	80	100	5.0 2.3
4 x 3 100 x 80	4.500 x 3.500 114.3 x 88.9	3½ 89	3⅝ 92	500 34.5	1⅞ 48	4 102	2⅝ 67	7½ 191	5¼ 133	½ x 3½ —	80	100	5.6 2.5
5 x 1¼ 125 x 32	5.563 x 1.660 141.3 x 42.4	2 51	2⅞ 54	500 34.5	1⅞ 48	4¼ 108	3¼ 83	9⅞ 232	3¾ 95	½ x 2¾ —	80	100	5.6 2.5
5 x 1½ 125 x 40	5.563 x 1.900 141.3 x 48.3	2 51	2⅞ 54	500 34.5	1⅞ 48	4¼ 108	3¼ 83	9⅞ 232	3¾ 95	⅝ x 3¼ —	100	130	5.6 2.5
5 x 2 125 x 50	5.563 x 2.375 141.3 x 60.3	2½ 64	2⅝ 67	500 34.5	1⅞ 48	4¼ 108	3¼ 83	9⅞ 232	4⅞ 105	⅝ x 3¼ —	100	130	5.5 2.5
5 x 2½ 125 x 65	5.563 x 2.875 141.3 x 73.0	2¾ 70	2⅞ 73	500 34.5	1⅞ 48	4¼ 108	3¼ 83	9⅞ 232	4⅜ 111	⅝ x 3¼ —	100	130	5.8 2.6
5 x 3 125 x 80	5.563 x 3.500 141.3 x 88.9	3½ 89	3⅝ 92	500 34.5	1⅞ 48	4⅝ 117	3¼ 83	9⅞ 232	5¼ 133	⅝ x 3¼ —	100	130	7.1 3.2
6 x 1½ 150 x 40	6.625 x 1.900 168.3 x 48.3	2 51	2⅞ 54	500 34.5	2 51	5 127	3⅞ 98	10⅞ 257	3¾ 95	⅝ x 4¼ *	100	130	7.2 3.3
6 x 2 150 x 50	6.625 x 2.375 168.3 x 60.3	2½ 64	2⅝ 67	500 34.5	2 51	5 127	3⅞ 98	10⅞ 257	4⅞ 105	⅝ x 4¼ *	100	130	7.8 3.5

Note:

2½", 5" and 6" Nominal size run pipe may be used on 3" O.D., 5½" O.D. and 6½" O.D. pipe.

* All bolts and nuts are of track head design and are zinc plated conforming to ASTM B633.

s – Working Pressure Ratings are for reference only and based on Sch. 40 pipe. For the latest UL/UCL, FM, VdS and LPCB pressure ratings versus pipe schedule, please visit www.asc-es.com or contact your local ASC Engineered Solutions™ Representative.

§ – For additional Bolt Torque information see Technical Data Section.

• Can not be used in cross configuration.

Not for use in copper systems.



asc-es.com

Building connections that last™

Clamp-T, Grooved Branch Fig. 7046FP

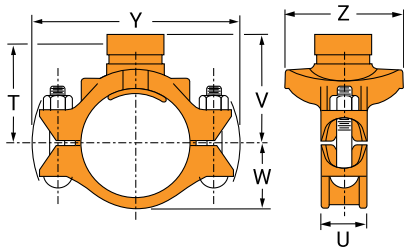


Fig. 7046

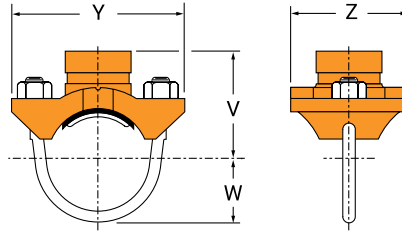


Fig. 7046 (U-Bolt)

WARNING

For dry pipe systems and freezer applications lubrication of the gasket is required, Gruvlok Xtreme Lubricant is required.

Nominal Size	O.D.	Hole Dimensions		Max. Working Pressure ^s	Clamp-T Dimensions					Bolt* Size	Specified Torque §		Approx. Wt. Ea.
		Min. Diam.	Max. Diam.		U	V Grooved	W	Y	Z		Min.	Max.	
In./DN(mm)	In./mm	In./mm	In./mm	PSI/bar	In./mm	In./mm	In./mm	In./mm	In./mm	In./mm	Ft.-Lbs./N-m	Ft.-Lbs./N-m	Lbs./kg
6 x 2½ 150 x 65	6.625 x 2.875 168.3 x 73.0	2¾ 70	2⅞ 73	500 34.5	2 51	5⅞ 130	3⅞ 98	10⅞ 257	4⅜ 111	⅝ x 4¼ *	100	130	7.6 3.4
6 x 3 O.D. 150 x 80	6.625 x 2.996 168.3 x 76.1	2¾ 70	2⅞ 73	500 34.5	2 51	5⅞ 130	3⅞ 98	10⅞ 257	4⅜ 111	⅝ x 4¼ *	100	130	7.6 3.4
6 x 3 150 x 80	6.625 x 3.500 168.3 x 88.9	3½ 89	3⅝ 92	500 34.5	2 51	5⅞ 130	3⅞ 98	10⅞ 257	5¼ 133	⅝ x 4¼ *	100	130	8.0 3.6
6 x 4 150 x 100	6.625 x 4.500 168.3 x 114.3	4½ 114	4⅝ 117	500 34.5	2 51	5¼ 133	3⅞ 98	10⅞ 257	6½ 165	⅝ x 4¼ *	100	130	10.4 4.7
8 x 2 200 x 50	8.625 x 2.375 219.1 x 60.3	2½ 64	2⅝ 67	500 34.5	2¼ 57	6⅞ 156	5 127	12¾ 324	4¼ 108	¾ x 4½ —	130	180	10.4 4.7
8 x 2½ 200 x 65	8.625 x 2.875 219.1 x 73.0	2¾ 70	2⅞ 73	500 34.5	2¼ 57	6⅞ 156	5 127	12¾ 324	4⅜ 111	¾ x 4½ M20 x 110	130 175	180 245	10.6 4.8
8 x 3 200 x 80	8.625 x 3.500 219.1 x 88.9	3½ 89	3⅝ 92	500 34.5	2¼ 57	6⅞ 156	5 127	12¾ 324	5¼ 133	¾ x 4½ M20 x 110	130 175	180 245	11.5 5.2
8 x 4 200 x 100	8.625 x 4.500 219.1 x 114.3	4½ 114	4⅝ 117	500 34.5	2¼ 57	6¼ 159	5 127	12¾ 324	6½ 165	¾ x 4½ M20 x 110	130 175	180 245	16.2 7.3

Note:

2½", 5" and 6" Nominal size run pipe may be used on 3" O.D., 5½" O.D. and 6½" O.D. pipe.

* All bolts and nuts are of track head design and are zinc plated conforming to ASTM B633.

s – Working Pressure Ratings are for reference only and based on Sch. 40 pipe. For the latest UL/UCL, FM, VdS and LPCB pressure ratings versus pipe schedule, please visit www.asc-es.com or contact your local ASC Engineered Solutions™ Representative.

§ – For additional Bolt Torque information see Technical Data Section.

• Can not be used in cross configuration.

Not for use in copper systems.



asc-es.com

Building connections that last™