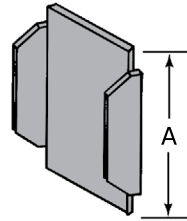


## End Cap with Knockout

**Figs. AS 2511, AS 2511 1, AS 2511 2, AS 2511 3, AS 6153, AS 652, AS 653, AS 654, AS 655, AS 656, AS 902, AS 2580, AS 901, AS 930**

### Type "A" End Cap

The Type "A" End Cap is supplied on all Concrete Inserts longer than 12". End Caps may be ordered separately.



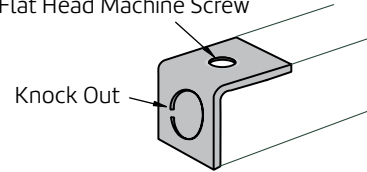
Catalog No.	Use With Anvil-Strut	A	Std. Pkg.	Wt./100 Pcs.
AS 902	PG AS 100	3 <sup>7</sup> / <sub>32</sub> "	100	19
AS 2580	PG AS 150	2 <sup>3</sup> / <sub>8</sub> "	100	16
AS 655	PG AS 200	1 <sup>5</sup> / <sub>8</sub> "	100	7
AS 656	PG AS 300	1 <sup>3</sup> / <sub>8</sub> "	100	6
AS 901	PG AS 400	1"	100	4
AS 930	PG AS 500	1 <sup>3</sup> / <sub>16</sub> "	200	4

Std Pkg & Wt/100 pcs: See chart above.

### End Cap With Knock Out (Conduit End Cap)

Hole for 1/4" - 20 x 5/8" for Flat Head Machine Screw

Knock Out

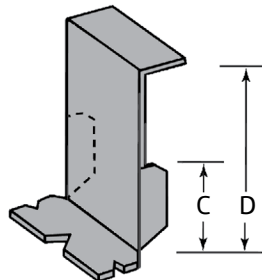


Catalog No.	Conduit Size	Use With Anvil-Strut	Wt./100 Pcs.
AS 2511 1	EG 1/2"	AS 150	27
AS 2511 2	EG 1/2" or 3/4"	AS 200 & AS 210	24
AS 2511 3	EG 1/2"	AS 300	21

When ordering AS 2511 2, please specify conduit size. Std Pkg & Wt/100 pcs: See chart above.

### Type "B" End Cap

The Type "B" End Cap is furnished on all Inserts up to 12" in length and provides nail lugs at each end of the Insert. End Caps may be ordered separately.



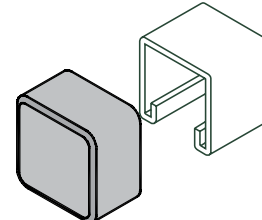
Catalog No.	Use With Anvil-Strut	C	D	Wt./100 Pcs.
AS 652	PG AS 200	1.42	3 <sup>1</sup> / <sub>8</sub> "	19
AS 653	PG AS 300	1.17	2 <sup>7</sup> / <sub>8</sub> "	16
AS 654	PG AS 400	0.79	2 <sup>1</sup> / <sub>2</sub> "	7

Std Pkg 50 - Wt/100 pcs: See chart above.

### Plastic Red & White Safety End Cap

AS 6153

Red, White



Size	Std. Pkg.	Wt./100 Pcs.	Use With Channel
1	100	5.0	AS 100
2	100	2.8	AS 200 & AS 210
3	100	2.5	AS 300
5	100	2.0	AS 500

Std Pkg & Wt/100 pcs: See chart above.

#### LEGEND:

GR: Powder Coated Supr-Green EG: Electro-Galvanized PG: Pre-Galvanized AL: Aluminum  
 HG: Hot Dipped Galvanized PL: Plain SS: Stainless Steel ZTC: Zinc Trivalent Chromium  
 Stainless Steel (SS), Zinc Trivalent Chromium (ZTC) and Hot Dipped Galvanized (HG) are specialty finishes.  
 Pricing is located in the Specialty Strut Section of the Anvil-Strut price book.



PROJECT INFORMATION	APPROVAL STAMP
Project:	Approved
Address:	Approved as noted
Contractor:	Not approved
Engineer:	Remarks:
Submittal Date:	
Notes 1:	
Notes 2:	