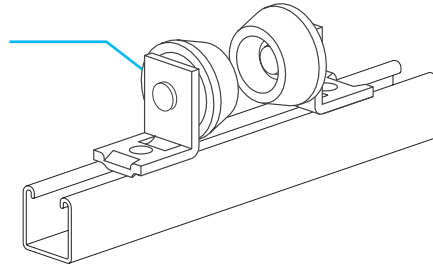


## Pipe Roller Support Fig. AS 815, AS 1901, AS 1902, AS 1911

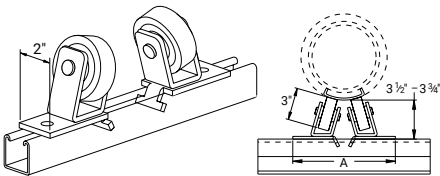


### Description

Anvil-Strut Pipe Clamps are all manufactured to fit into the standard openings of 1 5/8" channel to support runs of piping where desired, to secure the pipe in place.

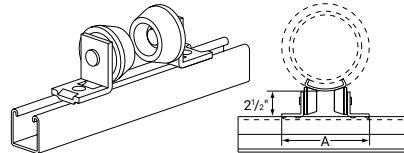
### (6" – 16" Pipe) Double Roller Pipe Support (1/2" – 4" Pipe) Pipe Roller Support

AS 815 EG



Order Nuts and Bolts Separately.  
For "A" Dimension Recommendations,  
see chart on next page.  
Std Pkg: 5 Pr. - Wt/100 pcs: 680 lbs.

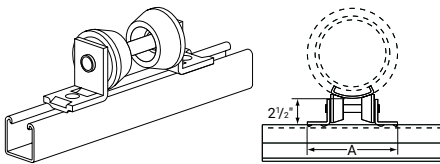
AS 1901 EG



For "A" Dimension Recommendations,  
see chart on next page.  
Std Pkg: 10 Pr. - Wt/100 pcs: 125 lbs.

### (1" – 8" Pipe) Pipe Roller Support

AS 1902 EG

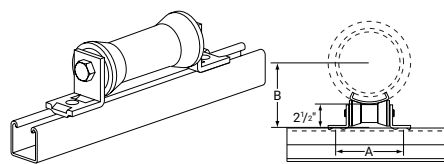


Size	A	Wt./100 pcs
1" – 2"	6 3/4"	299
2 1/2" – 3 1/2"	7 1/2"	304
4" – 6"	8 1/2"	311
8"	9 9/16"	319

For "A" Dimension Recommendations,  
see chart on next page.  
Std Pkg & Wt/100 pcs: See chart above.

### (2" – 14" Pipe) Pipe Roller

AS 1911 EG



Size	Std Pkg	Wt./100 pcs
2" – 3 1/2"	25	160
4" – 6"	20	215
8" – 10"	-	525
12" – 14"	-	1025

For "A" Dimension Recommendations,  
see chart on next page.  
Std Pkg & Wt/100 pcs: See chart above.

#### LEGEND:

**GR:** Powder Coated Supr-Green  
**EG:** Electro-Galvanized  
**PG:** Pre-Galvanized  
**AL:** Aluminum  
**HG:** Hot Dipped Galvanized  
**PL:** Plain  
**SS:** Stainless Steel  
**ZTC:** Zinc Trivalent Chromium  
Stainless Steel (**SS**), Zinc Trivalent Chromium (**ZTC**)  
and Hot Dipped Galvanized (**HG**) are specialty finishes.  
Pricing is located in the Specialty Strut Section of the  
Anvil-Strut price book.



PROJECT INFORMATION	APPROVAL STAMP
Project:	Approved
Address:	Approved as noted
Contractor:	Not approved
Engineer:	Remarks:
Submittal Date:	
Notes 1:	
Notes 2:	

## Pipe Roller Support Fig. AS 815, AS 1901, AS 1902, AS 1911

### (6" – 16" Pipe) Double Roller Pipe Support AS 815

Order Nuts and Bolts Separately.

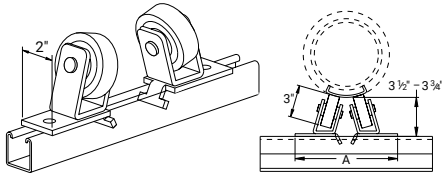


Chart for Dimension A

Pipe Size	No Insulation	1"	1 1/2"	2"	2 1/2"	3"	4"
6"	9 1/2"	10 1/4"	10 1/2"	10 3/4"	11"	11 3/8"	11 7/8"
8"	10 1/8"		11"	11 3/8"	11 3/4"	12"	12 1/2"
10"	10 3/4"		11 5/8"	12"	12 1/4"	12 1/2"	13"
12"	11 1/4"		12 1/8"	12 1/2"	12 3/4"	13"	13 1/2"
14"	11 5/8"		12 1/2"	12 7/8"	13"	13 3/8"	14"
16"	12 1/8"		13"	13 3/8"	13 7/8"	14"	14 1/2"

### (1/2" – 4" Pipe) Pipe Roller Support AS 1901

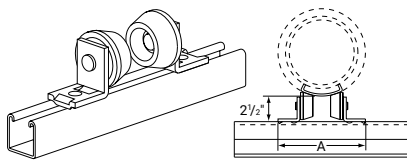


Chart for Dimension A

Pipe Size	No Insulation	1"	1 1/2"	2"	2 1/2"	3"	4"
1/2"	6 1/2"	6 1/2"					
3/4"	6 1/2"	6 1/2"	6 5/8"	6 7/8"			
1"	6 1/2"	6 1/2"	6 5/8"	6 7/8"			
1 1/4"	6 1/2"	6 1/2"	6 7/8"	7 1/8"	7 3/8"		
1 1/2"	6 1/2"	6 1/2"	6 7/8"	7 1/8"	7 3/8"		
2"	6 1/2"	6 5/8"	7 1/8"	7 3/8"	7 1/2"	8"	
2 1/2"	6 1/2"	6 5/8"	7 1/8"	7 3/8"	7 1/2"	8"	
3"	6 1/2"	7"	7 1/2"	7 3/4"	7 7/8"	8 1/8"	
3 1/2"	6 1/2"	7"	7 1/2"	7 3/4"	7 7/8"	8 1/8"	
4"	6 5/8"	7 1/4"	7 5/8"	7 7/8"	8"	8 3/8"	9"

## Pipe Roller Support Fig. AS 1901, AS 1902, AS 815, AS 1911

### (6" - 16" Pipe) Double Roller Pipe Support AS 1902

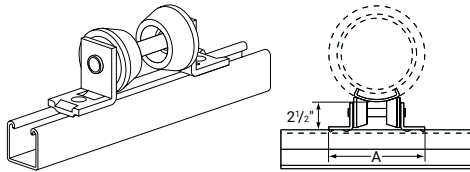


Chart for Dimension A

AS 1902 Size	Dimension A
1" - 2"	6 3/4"
2 1/2" - 3 1/2"	7 1/2"
4" - 6"	8 1/2"
8"	9 9/16"

Chart for Dimension A

Pipe Size	No Insulation	1"	1 1/2"	2"	2 1/2"	3"	4"
1/2"	AS 1902 - 1"-2"	AS 1902 - 1"-2"	AS 1902 - 1"-2"	AS 1902 - 2 1/2"-3 1/2"			
3/4"	AS 1902 - 1"-2"	AS 1902 - 1"-2"	AS 1902 - 1"-2"	AS 1902 - 2 1/2"-3 1/2"			
1"	AS 1902 - 1"-2"	AS 1902 - 1"-2"	AS 1902 - 1"-2"	AS 1902 - 2 1/2"-3 1/2"			
1 1/4"	AS 1902 - 1"-2"	AS 1902 - 1"-2"	AS 1902 - 1"-2"	AS 1902 - 2 1/2"-3 1/2"			
1 1/2"	AS 1902 - 1"-2"	AS 1902 - 1"-2"	AS 1902 - 2 1/2"-3 1/2"	AS 1902 - 2 1/2"-3 1/2"	AS 1902 - 2 1/2"-3 1/2"		
2"	AS 1902 - 1"-2"	AS 1902 - 1"-2"	AS 1902 - 2 1/2"-3 1/2"	AS 1902 - 2 1/2"-3 1/2"	AS 1902 - 2 1/2"-3 1/2"		
2 1/2"	AS 1902 - 1"-2"	AS 1902 - 1"-2"	AS 1902 - 2 1/2"-3 1/2"	AS 1902 - 2 1/2"-3 1/2"	AS 1902 - 2 1/2"-3 1/2"		
3"	AS 1902 - 1"-2"	AS 1902 - 2 1/2"-3 1/2"	AS 1902 - 2 1/2"-3 1/2"	AS 1902 - 4"-6"	AS 1902 - 4"-6"	AS 1902 - 4"-6"	
3 1/2"	AS 1902 - 1"-2"	AS 1902 - 2 1/2"-3 1/2"	AS 1902 - 2 1/2"-3 1/2"	AS 1902 - 4"-6"	AS 1902 - 4"-6"	AS 1902 - 4"-6"	
4"	AS 1902 - 1"-2"	AS 1902 - 2 1/2"-3 1/2"	AS 1902 - 2 1/2"-3 1/2"	AS 1902 - 4"-6"	AS 1902 - 4"-6"	AS 1902 - 4"-6"	
5"	AS 1902 - 2 1/2"-3 1/2"	AS 1902 - 4"-6"	AS 1902 - 4"-6"	AS 1902 - 4"-6"	AS 1902 - 4"-6"	AS 1902 - 8"	AS 1902 - 8"
6"	AS 1902 - 2 1/2"-3 1/2"	AS 1902 - 4"-6"	AS 1902 - 4"-6"	AS 1902 - 4"-6"	AS 1902 - 4"-6"	AS 1902 - 8"	AS 1902 - 8"
8"	AS 1902 - 2 1/2"-3 1/2"	AS 1902 - 4"-6"	AS 1902 - 8"	AS 1902 - 8"	AS 1902 - 8"	AS 1902 - 8"	AS 1902 - 8"

### (2" - 14" Pipe) Double Roller Pipe Support AS 9111

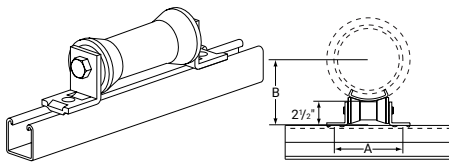


Chart for Dimension A

Size	Fit Pipe Size	A	B
2" - 3 1/2"	2"	5"	3"
	2 1/2"	5"	3 1/4"
	3"	5"	3 5/8"
	3 1/2"	5"	3 7/8"
4" - 6"	4"	5 7/8"	4 5/16"
	5"	5 7/8"	4 7/8"
	6"	5 7/8"	5 7/16"
8" - 1"	8"	8 5/16"	7 1/8"
	10"	8 5/16"	8 1/4"
12" - 14"	12"	10 7/8"	9 7/8"
	14"	10 7/8"	10 1/2"

**Note:** Anvil-Strut Rollers consist of a Cast Iron Roller & Steel Bracket.