



**COOPLOK™ Grooved Submittal**

**Fig. 65SR & 66SR  
Standard Weight Rigid Coupling**

Figure 65SR & 66SR Standard Weight Rigid couplings are designed for use in piping systems when rigid piping connections are desired. The angle-pad design allows the coupling housing to slide when tightened. This provides offset clamping that creates a rigid joint resistant to flexural and torsional loads.

**Material Specifications**

**Housing:**

Ductile Iron Housings conform to ASTM A-536, Grade 65-45-12

**Coating:**

- Orange Paint (rust inhibiting) – Standard Coating – Fig. 65SR
- Hot Dipped Galvanized conforming to ASTM A-153 – Fig. 66SR

**Coupling Gasket Style:**

- "C" Style - E-EPDM
- "C" Style - T-Nitrile
- "C" Style - O-Fluoroelastomer (Special Order)
- Triple Seal – E-EPDM Only (1-1/4" – 8" ONLY)  
Fig. 65SRTRI – Painted, Fig. 66SRTRI - Galvanized

**Nuts and Bolts:**

Zinc electroplated, heat treated, oval neck track head bolts conforming to ASTM-183 Grade 2 with a minimum tensile strength of 110,000 psi; Heavy hex nuts made of carbon steel conforming to ASTM A-563 Grade A or Grade B, or J995 Grade 2.

SCI track bolts are 100% magnetic particle inspected. The SCI logo appears on all COOPLOK™ track bolts.

**Coupling Gasket Material:**

- Pre-lubricated Grade E-EPDM (Green Stripe)  
-30°F (-34°C) to +230°F (+110°C) Service Temperature Range  
For use with water service, diluted acids, alkali solutions, oil-free air and other chemical services.  
NOT FOR PETROLEUM, STEAM, OR NATURAL GAS APPLICATIONS.
- Grade T-Nitrile (Orange Stripe)  
-20°F (-29°C) to +180°F (+82°C) Service Temperature Range  
For use with petroleum applications, vegetable & mineral oils, and air with oil vapors.  
NOT FOR USE IN HOT WATER, STEAM, OR NATURAL GAS APPLICATIONS.
- Grade O – Fluoroelastomer (Blue Stripe)  
+20°F (-6°C) to +300°F (+149°C) Service Temperature Range  
For high temperature resistance to oxidizing acids, petroleum oils, hydraulic fluids, halogenated hydrocarbons, and lubricants. (Special Order)

Project Information	
Project/Job/System:	
Submittal Date:	
Engineer:	Contractor:
Address:	Address:
City/State:	City/State:
Notes:	

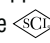
Approval Stamp

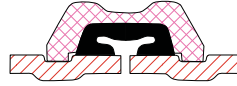
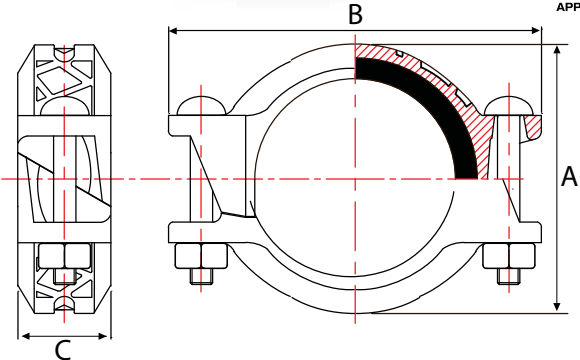


# Standard Weight Rigid Couplings



**Fig. 65SR & 66SR**  
**Standard Weight Rigid Coupling with "C" Gasket**

- Maximum working pressure depending on coupling size and schedule of pipe:
  - 1" to 6" - 1000 psi (68.9 bar)
  - 8" - 800 psi (55.1 bar)
  - 10" & 12" - 600 psi (41.3 bar)
  - 14" to 20" - 300 psi (20.6 bar)
  - 24" - 250 psi (17.2 bar)
- UL Listed & FM Approved – 1" thru 12"
- All housings, gaskets and bolts identified by SCI logo
- Gaskets are Pre-Lubricated
- Gasket Grade E - EPDM (green stripe) -30°F (-34°C) to +230°F (+110°C)
- Gasket Grade T - Nitrile (orange stripe) -20°F (-29°C) to +180°F (+82°C)
- Gasket Grade O - Fluoroelastomer (blue stripe) +20°F (-6°C) to +300°F (+149°C)
- Ductile iron housings conform to ASTM A-536 Grade 65-45-12
- Groove dimensions to AWWA C-606
- Finishes: Orange enamel paint  
 Hot dipped galvanized conforming to ASTM A-153
- Smith-Cooper Warranty only applies to assemblies made with housings, gaskets and bolts carrying the  logo



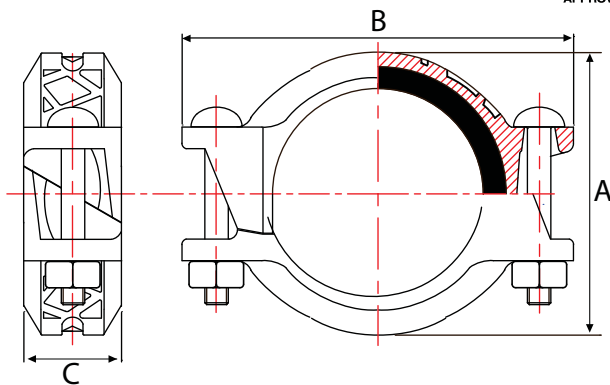
**"C" Style Gasket**

Pipe Size in / mm	Part Number		Pipe OD in / mm	Max Pipe End Gap in / mm	Dimensions			Number of Sections	Case Qty	Weight lb / kg
	Painted	Galvanized			A in / mm	B in / mm	C in / mm			
1 25	65SR3010	66SR3010	1.315 33.7	1/16 1.6	2.34 59.5	3.94 100.0	1.73 44.0	2	26	1.3 0.6
1-1/4 32	65SR3012	66SR3012	1.660 42.2	1/16 1.6	2.74 69.5	4.25 108.0	1.85 47.0	2	32	1.6 0.7
1-1/2 40	65SR3014	66SR3014	1.900 48.3	1/16 1.6	2.97 75.5	4.49 114.0	1.85 47.0	2	32	1.7 0.8
2 50	65SR3020	66SR3020	2.375 60.3	1/16 1.6	3.48 88.5	4.88 124.0	1.89 48.0	2	24	2.2 1.0
2-1/2 65	65SR3024	66SR3024	2.875 73.0	1/16 1.6	4.00 101.5	4.79 147.0	1.89 48.0	2	16	2.8 1.3
3 80	65SR3030	66SR3030	3.500 88.9	1/16 1.6	4.59 116.5	6.38 162.0	1.89 48.0	2	16	3.2 1.4
4 100	65SR3040	66SR3040	4.500 114.3	1/8 3.2	5.87 149.0	7.72 196.0	2.09 53.0	2	10	5.0 2.2
5 125	65SR3050	66SR3050	5.563 141.3	1/8 3.2	6.95 176.5	9.29 236.0	2.09 53.0	2	6	6.7 3.0
6 150	65SR3060	66SR3060	6.625 168.3	1/8 3.2	8.15 207.0	10.55 268.0	2.09 53.0	2	5	8.1 3.7
8 200	65SR3080	66SR3080	8.625 219.1	1/8 3.2	10.24 260.0	13.23 336.0	2.56 65.0	2	-	14.3 6.5
10 250	65SR3100	66SR3100	10.750 273.0	1/8 3.2	12.71 323.0	15.82 402.0	2.56 65.0	2	-	20.7 9.4
12 300	65SR3120	66SR3120	12.750 323.9	1/8 3.2	14.92 379.0	18.03 458.0	2.56 65.0	2	-	25.4 11.5
14 350	65SR3140	66SR3140	14.000 355.6	1/8 3.2	16.02 407.0	19.45 494.0	2.87 73.0	3	-	33.5 15.2
16 400	65SR3160	66SR3160	16.000 406.4	1/8 3.2	18.03 458.0	21.50 546.0	2.87 73.0	3	-	36.9 16.7
18 450	65SR3180	66SR3180	18.000 457.6	1/8 3.2	20.16 512.0	23.46 596.0	2.99 76.0	3	-	9.4 17.9
20 500	65SR3200	66SR3200	20.000 508.0	1/8 3.2	22.13 562.0	26.06 662.0	3.07 78.0	4	-	53.9 24.5
24 600	65SR3240	66SR3240	24.000 609.6	1/8 3.2	26.14 664.0	30.08 764.0	3.07 78.0	4	-	69.0 31.3



**Fig. 65SRTRI & 66SRTRI**  
**Standard Weight Rigid Coupling with Triple Seal Gasket**

- Maximum working pressure depending on coupling size and schedule of pipe:  
 1" to 6" - 1000 psi (68.9 bar)  
 8" - 800 psi (55.1 bar)
- All housings, gaskets and bolts identified by SCI logo
- Gasket Grade E - EPDM (green stripe) -30°F (-34°C) to +230°F (+110°C)
- Other gasket materials available by special order
- Ductile iron housings conform to ASTM A-536 Grade 65-45-12
- Groove dimensions to AWWA C-606
- Finishes: Orange enamel paint  
 Hot dipped galvanized conforming to ASTM A-153
- Smith-Cooper Warranty only applies to assemblies made with housings, gaskets and bolts carrying the logo



Pipe Size in / mm	Part Number		Pipe OD in / mm	Max Pipe End Gap in / mm	Dimensions			Number of Sections	Case Qty	Weight lb / kg
	Painted	Galvanized			A in / mm	B in / mm	C in / mm			
1-1/4 32	65SRTRI3012	66SRTRI3012	1.660 42.2	1/16 1.6	2.74 69.5	4.25 108.0	1.85 47.0	2	32	1.6 0.7
1-1/2 40	65SRTRI3014	66SRTRI3014	1.900 48.3	1/16 1.6	2.97 75.5	4.49 114.0	1.85 47.0	2	32	1.7 0.8
2 50	65SRTRI3020	66SRTRI3020	2.375 60.3	1/16 1.6	3.48 88.5	4.88 124.0	1.89 48.0	2	24	2.2 1.0
2-1/2 65	65SRTRI3024	66SRTRI3024	2.875 73.0	1/16 1.6	4.00 101.5	4.79 147.0	1.89 48.0	2	16	2.8 1.3
3 80	65SRTRI3030	66SRTRI3030	3.500 88.9	1/16 1.6	4.59 116.5	6.38 162.0	1.89 48.0	2	16	3.2 1.5
4 100	65SRTRI3040	66SRTRI3040	4.500 114.3	1/8 3.2	5.87 149.0	7.72 196.0	2.09 53.0	2	10	5.0 2.3
5 125	65SRTRI3050	66SRTRI3050	5.563 141.3	1/8 3.2	6.95 176.5	9.29 236.0	2.09 53.0	2	6	6.7 3.0
6 150	65SRTRI3060	66SRTRI3060	6.625 168.3	1/8 3.2	8.15 207.0	10.55 268.0	2.09 53.0	2	5	8.1 3.7
8 200	65SRTRI3080	66SRTRI3080	8.625 219.1	1/8 3.2	10.24 260.0	13.23 336.0	2.56 65.0	2	-	14.3 6.5

**Please see complete installation instructions at [www.smithcooper.com](http://www.smithcooper.com) for important guidelines and limitations on the use and applications of COOPLOK™ Grooved Couplings and Fittings.**