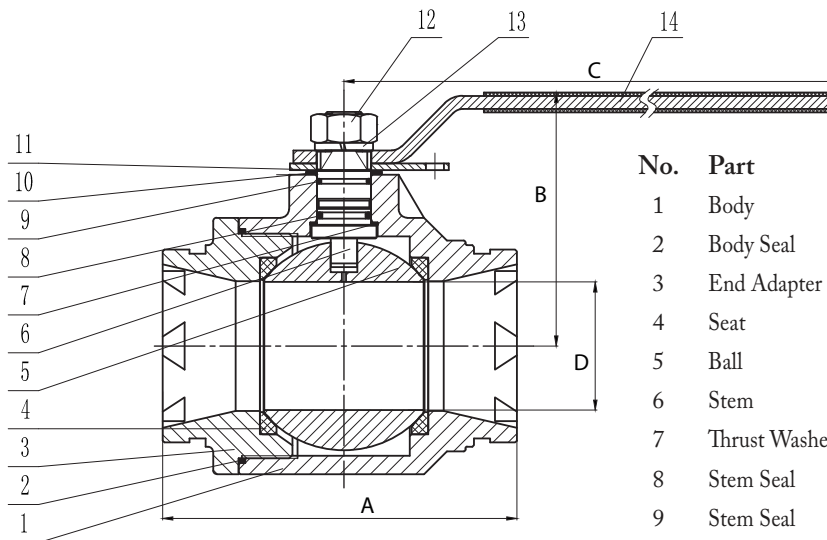


## Fig. 67GBV

### GROOVED BALL VALVE



- Designed for use in oil, gas and/or mining services
  - Ductile Iron body, standard port
  - NACE Compliant
  - 316 Stainless Steel ball and stem
  - PTFE body seat
  - Viton® B Stem seals
  - Lever handle with padlock feature
  - Grooved end dimensions to AWWA C-606
  - 2" – 4": 1,000 psig working pressure
  - 6": 1,500 psig working pressure
  - Color - Black
- Not for use in potable water systems



No.	Part	Materials Specification
1	Body	ASTM A395 60-40-18
2	Body Seal	Viton B
3	End Adapter	ASTM A395 60-40-18
4	Seat	PTFE + 15% GF
5	Ball	ASTM A182 F316
6	Stem	ASTM A176 316
7	Thrust Washer	PTFE
8	Stem Seal	Viton B
9	Stem Seal	Viton B
10	Gasket	PTFE
11	Stop Plate	Carbon Steel + Ni
12	Nut	Carbon Steel + Zn
13	Spring Washer	Spring Steel
14	Handle	Carbon Steel

Pipe Size in / mm	Part Number	A in / mm	B in / mm	C in / mm	D in / mm	Weight lb / kg
2 50	67GBV1020	5.51 140.0	4.29 109.0	8.54 216.9	1.50 38.1	9.5 4.32
3 80	67GBV1030	6.73 170.9	5.57 141.5	10.00 254.0	2.56 65.0	22.2 10.09
4 100	67GBV1040	8.27 210.1	5.92 150.4	13.50 342.9	3.00 76.2	35.7 16.23
6 150	67GBV1060	10.12 257.0	10.13 257.3	39.37 1000.0	5.00 127.0	97.5 44.32

USA 800-766-0076

Fax 323-890-4456

www.smithcooper.com

Los Angeles, CA

Chicago, IL

Atlanta, GA

Vancouver, WA