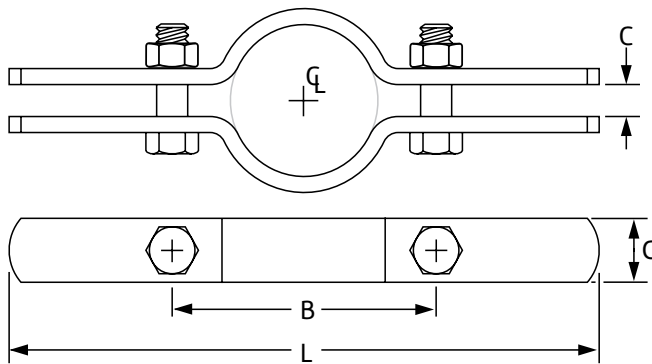
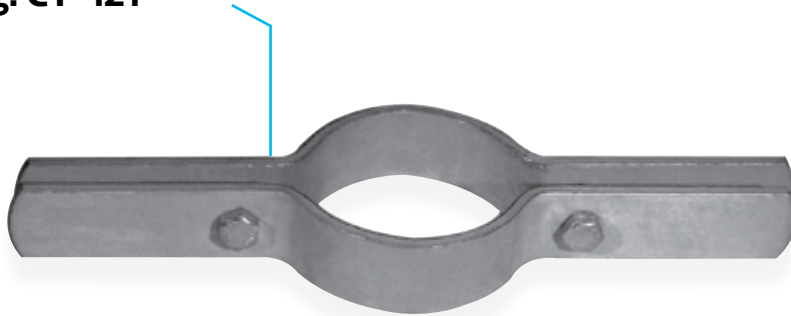


Copper Tubing Riser Clamp Fig. CT-121



Size Range: 1/2" through 4"

Material: Carbon steel

Finish: Copper plated

Service: Recommended for support and steadying of copper tube risers, either insulated or non-insulated. This product is not intended for use with hanger rods.

Approvals: Complies with Federal Specification A-A-1192A (Type 8), WW-H-171-E (Type 8), ANSI/MSS SP-69 and MSS SP-58 (Type 8).

Service: For support and steadying of copper tubing risers.

Installation: Clamp is fitted and bolted preferably below a coupling or fitting on the tubing. Do not over tighten bolts.

Features: Rounded ears provide greater safety for personnel.

Ordering: Specify tube size, figure number, and name.



Fig. CT-121: Dimensions (in) • Loads (lbs) • Torque (ft-lbs) • Weight (lbs)

Tube Size	Max Load	Weight	L	G Width	B	C	Bolt Size	Torque Values
1/2	75	0.52	6 1/2	1	2 7/8	3/8	5/16	11
3/4		0.56	7		3 1/8			
1		0.94	9 3/8		3 1/2			
1 1/4		0.98	9 5/8		3 7/8			
1 1/2	150	1.50	10	1 1/4	4 1/4	1/2	3/8	21
2		1.50	10 3/8		4 3/4			
2 1/2		1.70	11 13/16		5 1/2			
3		1.80	11 1/2		6 1/2			
3 1/2	300	1.90	12	1	7	1/2	1/2	46
4		2.60	13					

Note: Minimum loads per MSS SP only applicable to 1 1/4" and up.

PROJECT INFORMATION	APPROVAL STAMP
Project:	Approved
Address:	Approved as noted
Contractor:	Not approved
Engineer:	Remarks:
Submittal Date:	
Notes 1:	
Notes 2:	