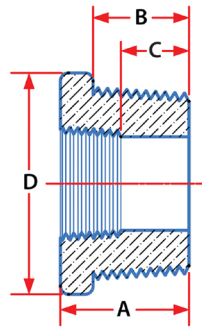
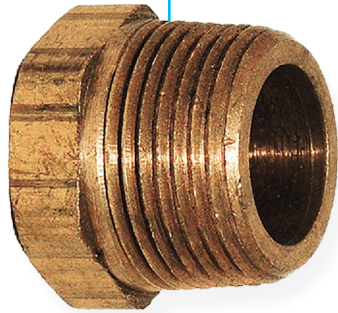


Domestic Lead-Free Bronze 125# Hex Bushing Fig. 2310



Dimensions

Size	Pkg. Qty.	Approx. Weight	A Inches	B Inches	C Inches	H Inches
1/4" x 1/8"	25	.02	0.44	0.26	0.14	0.64
1/2" x 1/8"	25	.08	0.56	0.25	0.19	0.87
1/2" x 1/4"	25	.06	0.56	0.32	0.19	0.87
1/2" x 3/8"	25	.06	0.56	0.41	0.19	0.87
3/4" x 1/8"	25	.15	0.63	0.63	0.25	1.15
3/4" x 1/4"	25	.15	0.63	0.32	0.22	1.15
3/4" x 3/8"	25	.11	0.63	0.36	0.22	1.15
3/4" x 1/2"	25	.11	0.63	0.52	0.22	1.15
1" x 1/4"	25	.20	0.75	0.22	0.3	1.12
1" x 3/8"	25	.20	0.75	0.25	0.3	1.12
1" x 1/2"	25	.20	0.75	0.42	0.25	1.42
1" x 3/4"	25	.20	0.75	0.5	0.25	1.42
1-1/4" x 1/4"	25	.31	-	-	-	-

Material Specifications

Domestic Threaded Fittings
ASTM B584

Lead-Free Bronze Domestic Threaded Fittings
ASTM B584

Alloy
C89833

Bronze Bar Stock Threaded Fittings
ASTM B16

Alloy
C36000

PROJECT INFORMATION	APPROVAL STAMP
Project:	Approved
Address:	Approved as noted
Contractor:	Not approved
Engineer:	Remarks:
Submittal Date:	
Notes 1:	
Notes 2:	

Domestic Lead-Free Bronze 125# Hex Bushing Fig. 2310

Dimensions (cont.)

Size	Pkg. Qty.	Approx. Weight	A Inches	B Inches	C Inches	H Inches
1-1/4" x 3/8"	25	.31	0.80	0.36	0.34	1.12
1-1/4" x 1/2"	25	.31	0.80	0.43	0.34	1.34
1-1/4" x 3/4"	25	.33	0.80	0.50	0.28	1.76
1-1/4" x 1"	25	.33	0.80	0.58	0.28	1.76
1-1/2" x 1/2"	25	.55	0.83	0.43	0.37	1.34
1-1/2" x 3/4"	25	.55	0.83	0.50	0.37	1.63
1-1/2" x 1"	25	.35	0.83	0.58	0.31	2.00
1-1/2" x 1-1/4"	25	.35	0.83	0.71	0.31	2.00
2" x 1/4"	10	.69	-	-	-	-
2" x 1/2"	10	.69	0.88	0.50	0.41	1.34
2" x 3/4"	10	.69	0.88	0.50	0.41	1.63
2" x 1"	10	.69	0.88	0.58	0.41	1.95
2" x 1-1/4"	10	.73	0.88	0.67	0.34	2.48
2" x 1-1/2"	10	.73	0.88	0.70	0.34	2.48
2-1/2" x 1"	5	1.08	1.07	0.58	0.44	1.95
2-1/2" x 1-1/4"	5	1.08	1.07	0.67	0.44	2.39
2-1/2" x 1-1/2"	5	1.00	1.07	0.70	0.44	2.68
2-1/2" x 2"	5	1.00	1.07	0.75	0.37	2.98
3" x 3/4"	5	1.67	-	-	-	-
3" x 1"	5	1.67	-	-	-	-
3" x 1-1/4"	5	1.67	1.13	0.67	0.48	2.39
3" x 1-1/2"	5	1.67	1.13	0.70	0.48	2.68
3" x 2"	5	1.83	1.13	0.75	0.48	3.28
3" x 2-1/2"	5	1.83	1.13	0.92	0.40	3.86
4" x 2"	1	3.02	1.22	0.75	0.60	3.28
3" x 2-1/2"	1	3.30	1.22	0.92	0.60	3.86
4" x 3"	1	3.30	1.22	0.98	0.50	4.62



asc-es.com

Building connections that last™