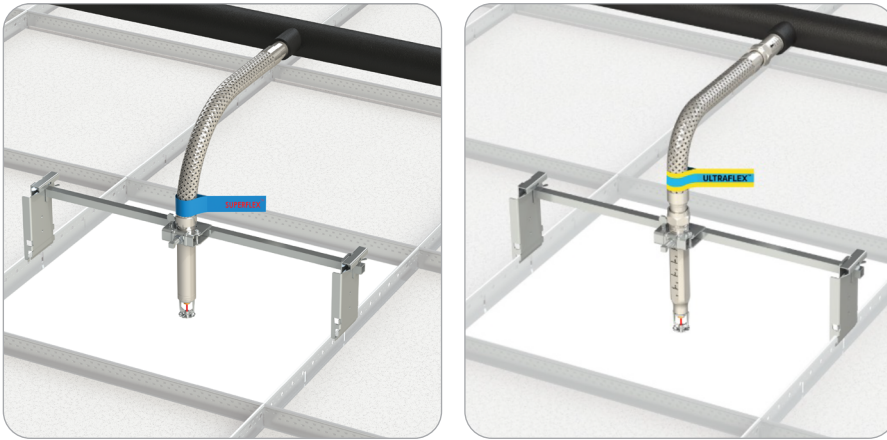


Fig. FH120 Rapid Installation Bracket

For Listings/Approval Details and Limitations,
visit our website at www.asc-es.com or contact an
ASC Engineered Solutions™ Sales Representative.

Fig. FH120 cULus & FM Listed Hoses

Hose Figure #	cULus Listed	FM Approved	
	24"	24"	48"
FH206 Series	✓	✓	✓
FH225 Series	✓	✓	✓
FH226 Series	✓	✓	✓
FH306 Series	✓	✓	✓
FH325 Series	✓	✓	✓
FH326 Series	✓	✓	✓
20XXSF	✓	✓	✓
20XXSF-SLT	✓	✓	✓
HB1*	✓	✓	✓
HB-7 Series	✓	✓	✓

***Note:** The HB1 is listed with the 7" long drop.

Product Specifications**Bracket Length**

24 in

48 in

Material

Carbon Steel – Galvanized

Applications

- Suspended Ceilings per ASTM C635 & C636
- Wood Framing – Gypsum or Dry Wall
- Steel Framing – Gypsum or Dry Wall

Features

- Bracket clamping design allows for easy installation to the suspended ceiling T-bar without power tools.
- The bracket length is adjustable to accommodate various ceiling sizes.
- Open hub design allows for simplified hose installation.
- The wide leg design prevents rotation and ensures stability.
- The bracket hub position is infinitely adjustable.
- Available tamper resistant options.

Ordering

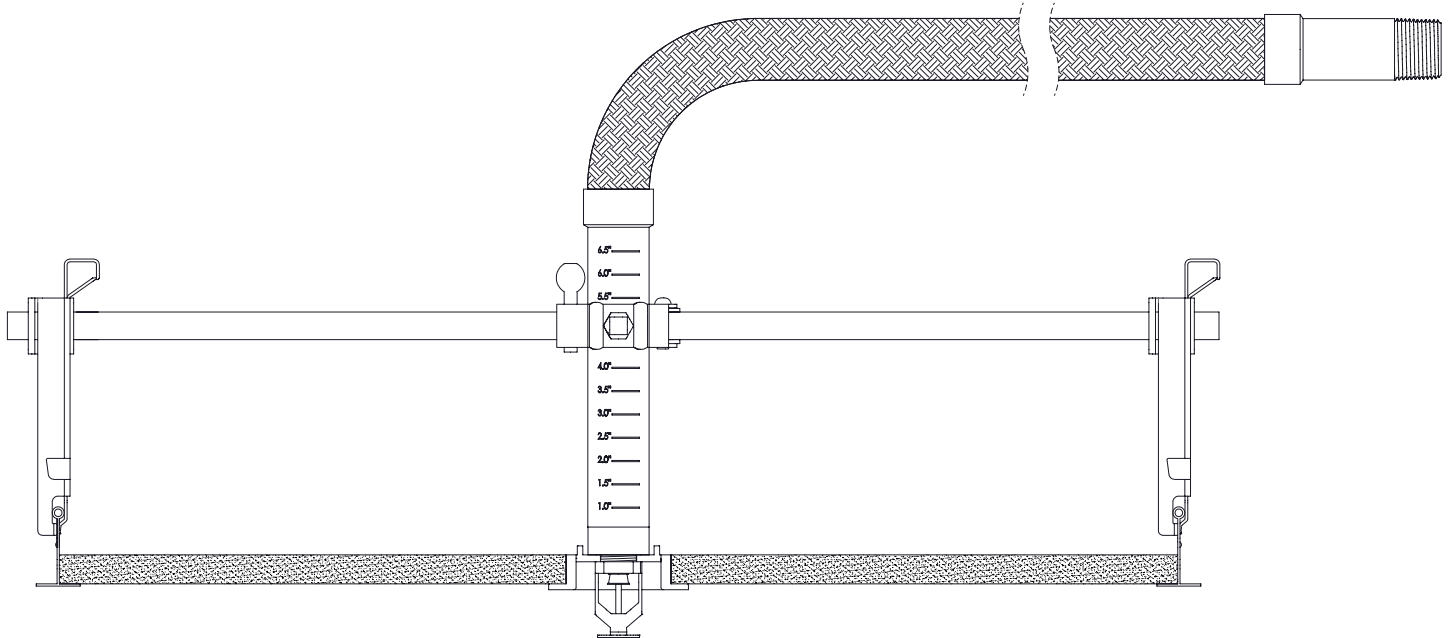
Specify figure number, description, and length.



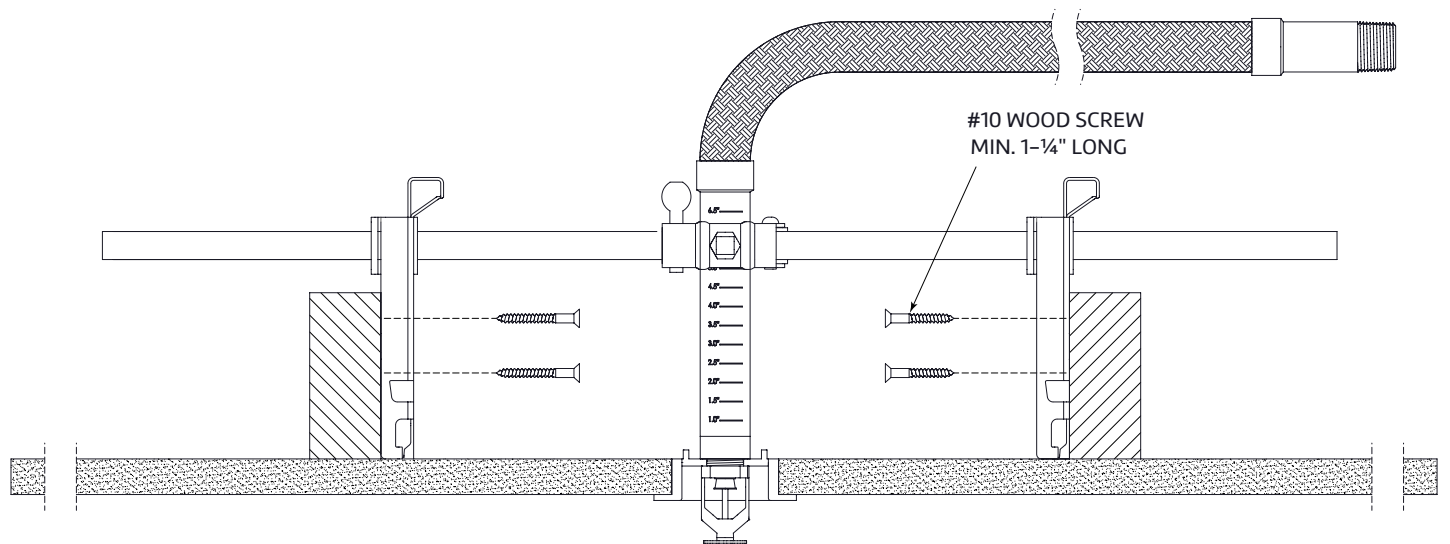
PROJECT INFORMATION	APPROVAL STAMP
Project:	Approved
Address:	Approved as noted
Contractor:	Not approved
Engineer:	Remarks:
Submittal Date:	
Notes 1:	
Notes 2:	

Fig. FH120 Rapid Installation Bracket

Applications



Suspended Ceiling Application – 24" & 48" FH120 Brackets



16" On-Center Wood Frame Installation – 24" FH120 Brackets

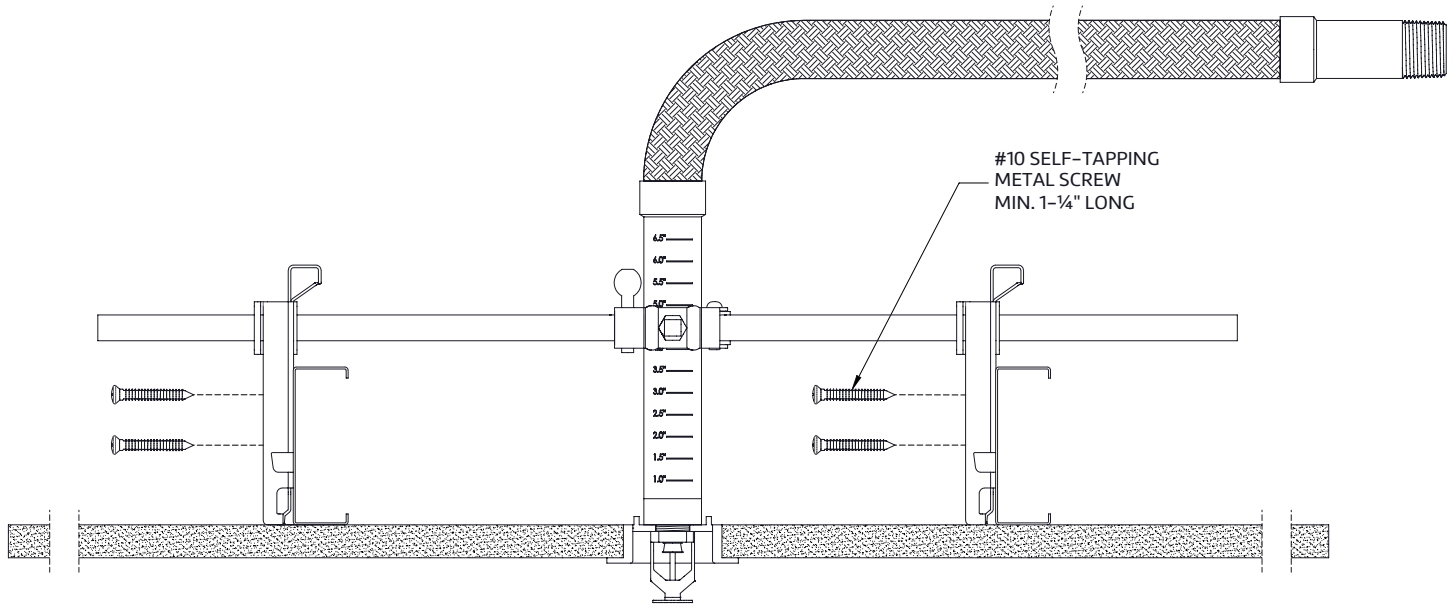


asc-es.com

Building connections that last™

Fig. FH120 Rapid Installation Bracket

Applications (Continued)



16" On-Center Steel Frame Installation – 24" FH120 Brackets



asc-es.com

Building connections that last™



Fig. FH120 Rapid Installation Bracket

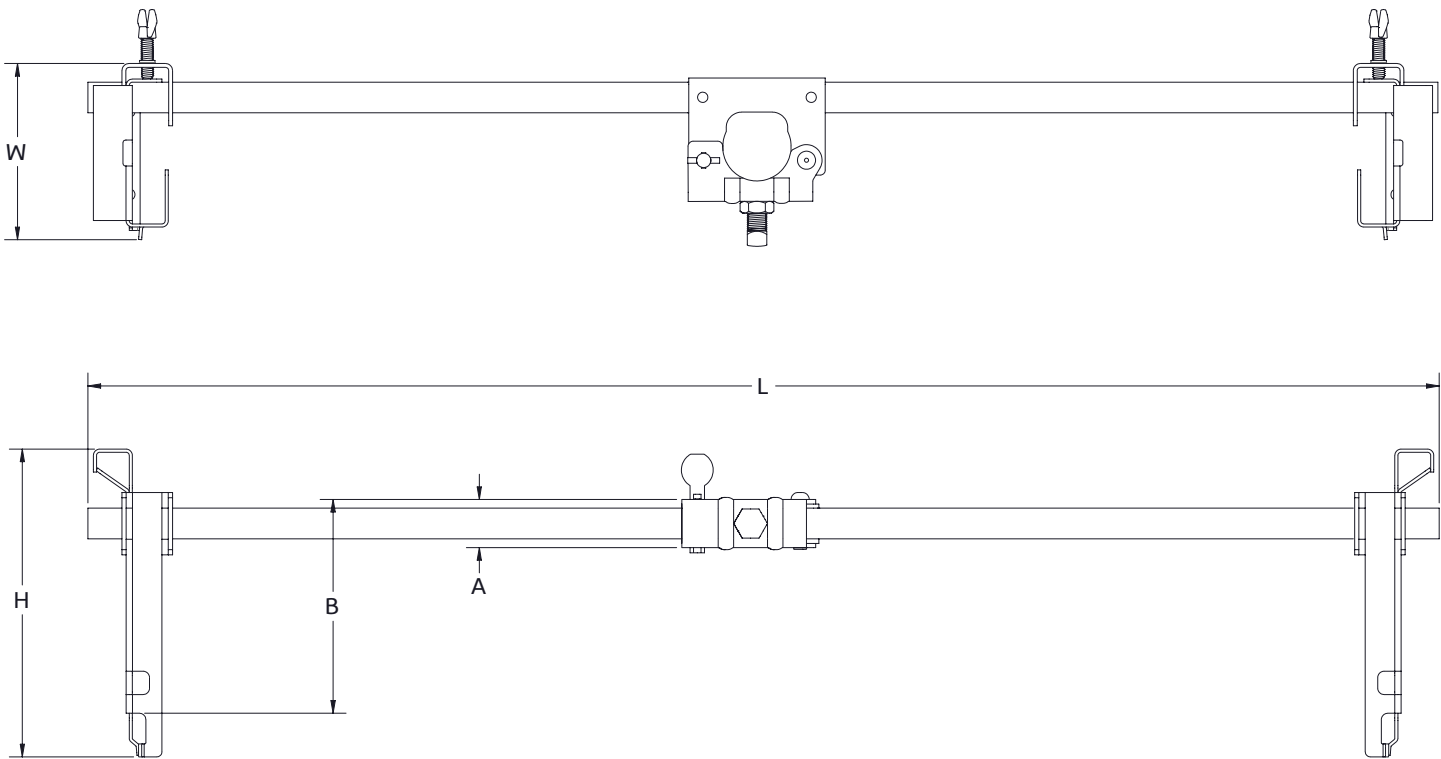


Fig. FH120 Dimensions

Bracket Length	L	W	H	A	B
	In/mm	In/mm	In/mm	In/mm	In/mm
24in	26 660.4	3.39 86.1	5.93 150.6	0.93 23.6	4.12 104.7
48in	50 1270				

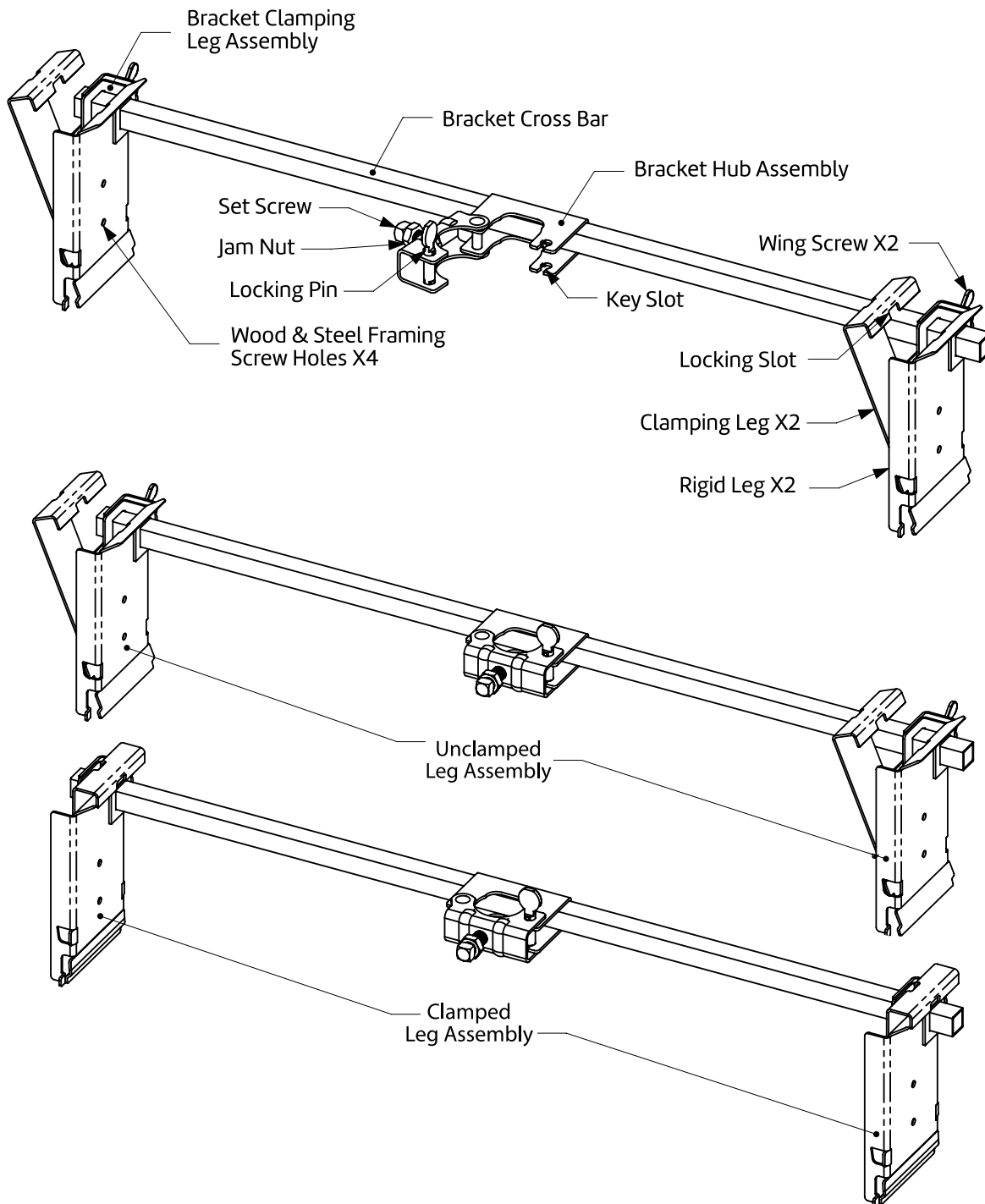


asc-es.com

Building connections that last™

Fig. FH120 Rapid Installation Bracket

Bracket Components & Features



asc-es.com

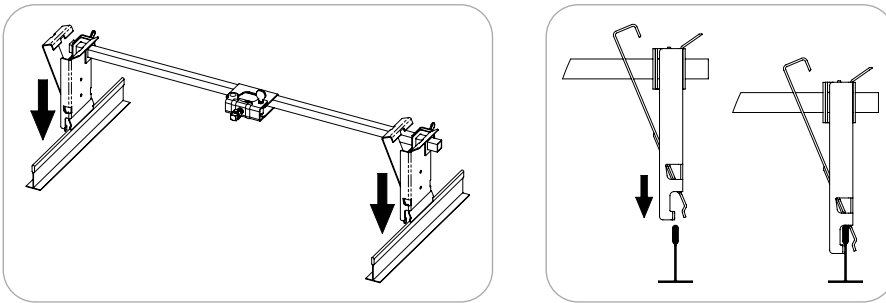
Building connections that last™

Fig. FH120 Rapid Installation Bracket

Installation Instructions

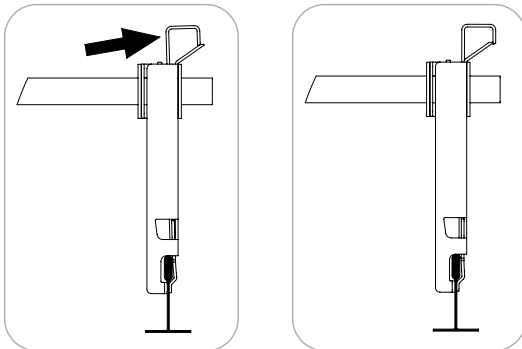
Connection to Suspended Ceiling T-bar

- 1 Determine the location of the sprinkler above the suspended ceiling tile. Position the bracket clamping legs and bracket hub in the desired location on suspended ceiling T-bar. Note: the hub center is aligned with the center hole in the bracket legs.
- 2 With the clamping leg assemblies in the open position, install the clamping leg assemblies at the same time by applying downward pressure until the T-bar is fully inserted between the clamps on both sides.

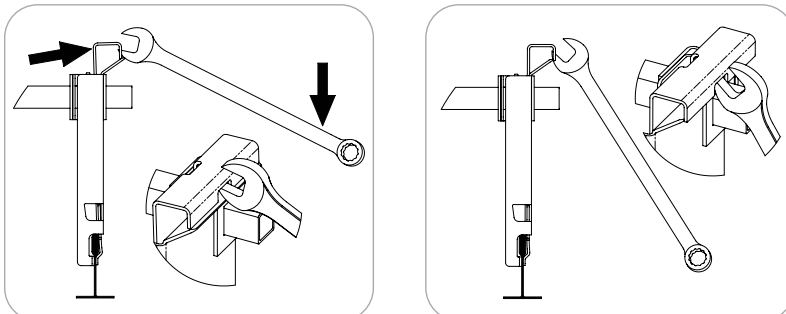


- 3 Close the clamping leg assembly on the T-Bar.

- a By hand: Apply pressure to the top of the clamping leg assembly until they overlap and lock in position.



- b With a $\frac{3}{8}$ or $\frac{7}{16}$ wrench: Pry the clamping leg closed through the locking slot until they overlap and lock in position.



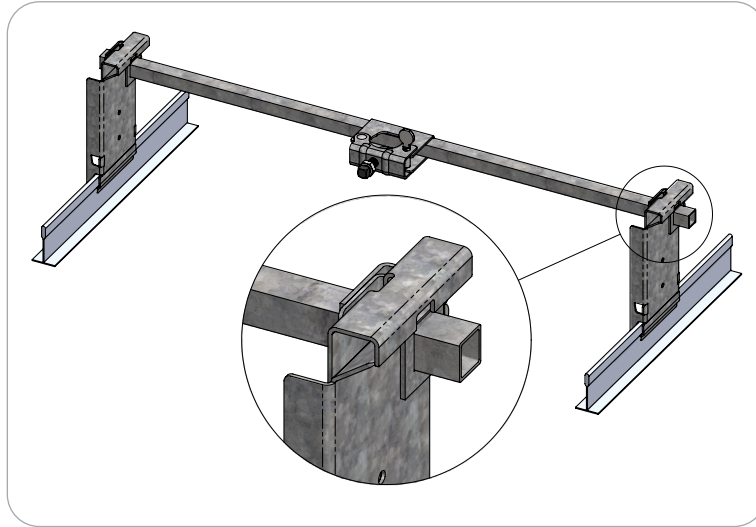
asc-es.com

Building connections that last™

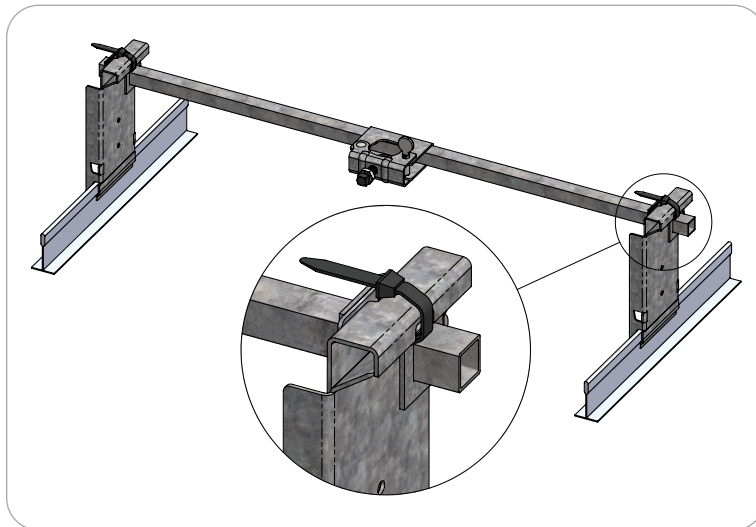
Fig. FH120 Rapid Installation Bracket

Installation Instructions (Continued)

Connection to Suspended Ceiling T-bar (Continued)



Completed Installation on the Suspended Ceiling T-Bar



Completed Installation on a Suspended Ceiling T-Bar –
Shown with optional Tamper Resistant Zip-Tie

Note: Zip-Tie not provided.



asc-es.com

Building connections that last™

Fig. FH120 Rapid Installation Bracket

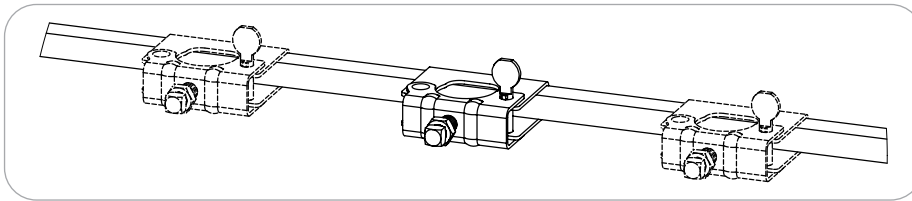
Installation Instructions (Continued)

Connection to Wood Frames or Steel Studs in Gypsum or Drywall

- 1 Determine the location of the sprinkler between the wood frames or steel studs.
- 2 Adjust the position of the bracket clamping legs until they are in the desired position, as shown in the application images.
- 3 Install two (2) screws into each structural stud (wood or steel). Four (4) screws total per bracket.
 - a Wood Frames: #10 x 1¼" Self Tapping Screw.
 - b Steel Frames: #10 x 1¼" Self Tapping Screw

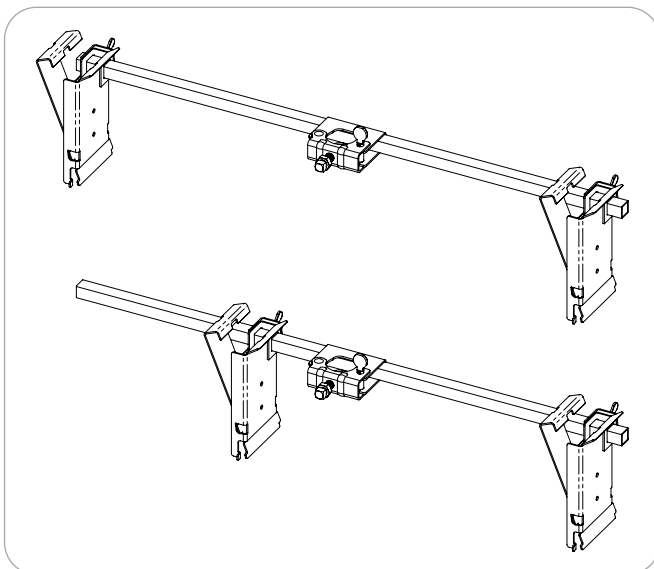
Adjusting the Bracket Hub

- 1 Prior to installation of the flexible hose drop, the bracket hub may freely move along the length of the bracket cross bar until the desired position has been reached.



Adjusting the Bracket Clamping Leg Positions

- 1 Prior to installation of the bracket to structure, the legs may be moved along the length of the bracket cross bar until the desired position has been reached.
- 2 Loosen the wing screw. Slide the bracket clamping leg assembly to the desired position. Tighten the wing screws hand tight plus ½ turn. An adjustable crescent wrench is recommended.



asc-es.com

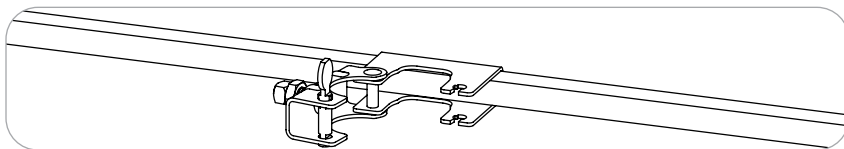
Building connections that last™

Fig. FH120 Rapid Installation Bracket

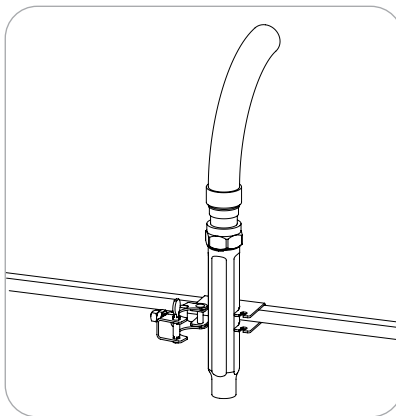
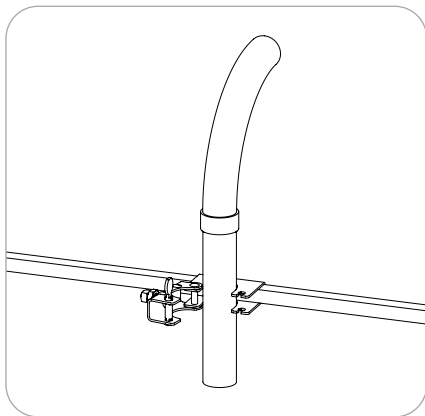
Installation Instructions (Continued)

Connection to the Flexible Sprinkler Hose

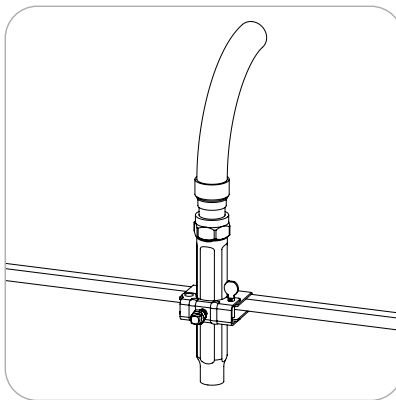
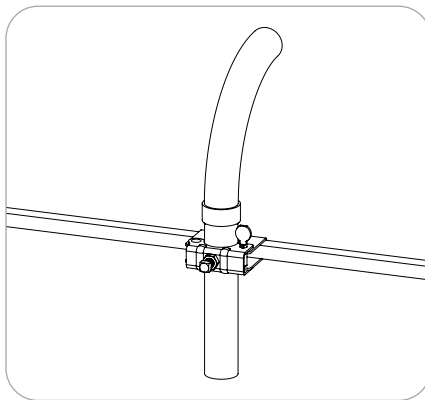
- 1 Open the hinged door on the bracket hub assembly.



- 2 Slide the flexible hose drop into the hub.



- 3 Close the hinged door and lock the locking pin with a ¼ turn.



- 4 Ensure the flexible hose drop is straight and not applying a substantial moment on the bracket which may cause sprinkler misalignment.



asc-es.com

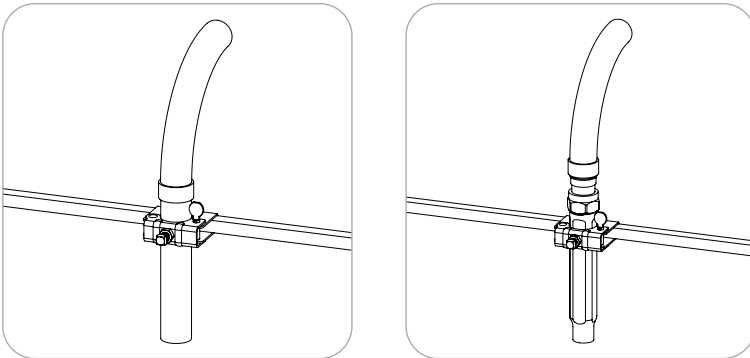
Building connections that last™

Fig. FH120 Rapid Installation Bracket

Installation Instructions (Continued)

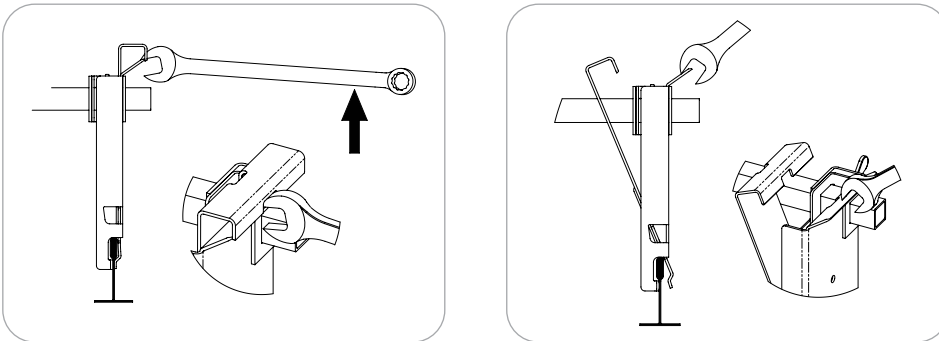
Connection to the Flexible Sprinkler Hose (Continued)

- 5 Adjust the flexible hose drop to the desired height.
- 6 Tighten the set screw hand-tight plus a $\frac{3}{4}$ turn (130 in-lbs) with a $\frac{7}{16}$ 12-point socket. Tighten the jam nut hand tight plus $\frac{1}{2}$ turn.



Removal from the Suspended Ceiling T-bar

- 1 With a $\frac{3}{8}$ or $\frac{7}{16}$ wrench, pry the clamping leg open through the locking slot until the legs spring open.



- 2 Inspect the clamping leg assembly for damage prior to re-installation.

General Notes

Installation & maintenance of FlexHead products shall be in accordance with applicable local and federal codes (E.g. NFPA 13, NFPA 13R, NFPA 13D, NFPA 25, FM Datasheets, IBC).



asc-es.com

Building connections that last™