

Regional Thread Solutions – Chicago, IL Fire Department Connection Solutions



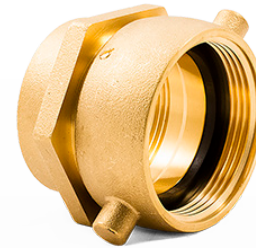
Single Clapper Siamese FDC

- Rough Brass Body
- UL & FM – 300psi
- 4 Female NPT X 2 1/2 Female CF**
 - FPPI Model #: 09-000-08
 - ASC Part #: 4380000020
- 4 Female NPT X 2 1/2 Female CF**
 - FPPI Model #: 09-070-08
 - ASC Part #: 4380000880



Single Clapper Siamese 90° FDC

- Rough Brass Body
- UL & FM – 300psi
- 4 Female NPT X 2 1/2 Female CF**
 - FPPI Model #: 09-020-08
 - ASC Part #: 4380000420
- 4 Grooved X 2 1/2 Female CF**
 - FPPI Model #: 09-090-08
 - ASC Part #: 4380001280



Open Snoots

- Rough Brass Body
- 2 1/2 Female NPT X 2 1/2 Female CF**
 - FPPI Model #: 09-600-08
 - ASC Part #: 4380004020
- 2 1/2 Male NPT X 2 1/2 Female CF**
 - FPPI Model #: 09-616-08
 - ASC Part #: 4380004230



Double Clapper Siamese FDC

- Rough Brass Body
- UL & FM – 300psi
- 4 Female NPT X 2 1/2 Female CF**
 - FPPI Model #: 09-121-08
 - ASC Part #: 4380001860



Replacement Swivel Kit

- Rough Brass Body
- 2 1/2 Female CF**
 - FPPI Model #: 09-425-08
 - ASC Part #: 4380002680

Please contact your local ASC Engineered Solutions sales representative.

Regional Thread Solutions – Chicago, IL

Hose Valve Solutions

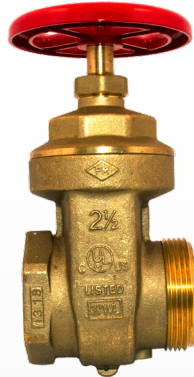


Angle Hose Valve

- Rough Brass Body
- UL & FM – 300psi

2½ Female NPT X 2½ Male CF

- FPPI Model #: 07-016-00
- ASC Part #: 4324000820



Gate Hose Valve

- Rough Brass Body
- UL & FM – 300psi

2½ Female NPT X 2½ Male CF

- FPPI Model #: 07-078-08
- ASC Part #: 4324000962



Cap & Chain

- Rough Brass Body

2½ Female CF

- FPPI Model #: 07-266-00
- ASC Part #: 4324001052

Regional Thread	Thread Abbreviation	Thread Size	Diameter In (mm)	Threads per Inch
Chicago Fire	CF	2½ NPS	2.9900 (75.946)	7.5

Please contact your local ASC Engineered Solutions sales representative.



asc-es.com

Building connections that last™