



March 2004

Installation Guide

FlexHead Institutional Sprinkler Connection
For use with pendant and horizontal sidewall applications

WARNING!

These installation instructions are for qualified and licensed technicians in the Fire Protection field only. Consult NFPA, FM Global, Underwriters Laboratory, state and local code guidelines prior to installation. Penetration through a wall or ceiling shall be acceptable by an authority having jurisdiction. Failure to follow these specific instructions may cause personal injury. Installation technicians must read entire installation instructions prior to attempting installation of product. During maintenance, inspection, or relocation of FlexHead product fire sprinkler system must be inactive. Do not attempt relocation or maintenance of FlexHead product while fire sprinkler system is under pressure.

Tools Required

Standard Pipe Wrench
Safety Glasses
Adjustable Wrench
Screw Driver
Hand drill
3/16" masonry drill bit

Material Required

Sprinkler Pipe Thread Sealant
Teflon Tape
Two (2) 1/4" x 1-3/4" Tapcon Masonry Anchor Screws



Fig. 1



Fig. 2



Fig. 3



Fig. 4



Fig. 5

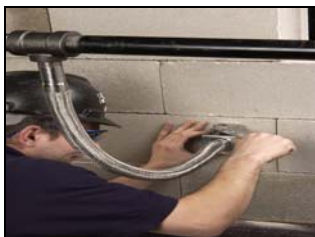


Fig. 6



Fig. 7

1. Mounting the FlexHead Clamp #UH to concrete wall/ceiling. **M#: UH-1**

- A. Remove one (1) FlexHead clamp #UH with attachment bolt from box.
- B. Place clamp #UH over previously drilled hole in concrete wall. Align center hole in clamp with hole in wall. Make sure attachment ears of clamp #UH are against wall or ceiling. Mark each of the two (2) 1/4" attachment holes on ears of FlexHead clamp #UH. Remove Flexhead clamp #UH. **(See Figure 1)**
- C. Using a 3/16" masonry drill bit, drill out both of the marked attachment holes on concrete wall or ceiling. **(See Figure 2)**
- D. Place clamp #UH over hole in wall and line up holes in attachment ears with 3/16" holes previously drilled in the concrete wall or ceiling. Install two (2) 1/4"x 1-3/4" Tapcon Masonry Anchor Screws until tight anchoring FlexHead Clamp #UH to concrete wall or ceiling. **(See Figure 3)**

2. Connect FlexHead To Sprinkler Branch Line.

- A. Apply Teflon tape and pipe sealant to one inch (1") male threaded end of FlexHead per NFPA guidelines.
- B. With standard Pipe wrench, attach one inch (1") male threaded end of FlexHead to sprinkler pipe branch per NFPA, state and local code guidelines by using one (1") inch rigid male pipe end of FlexHead as a wrenching surface. **Do not use welded or braided section of FlexHead hose as a wrenching surface. Not intended to be installed in vertical orientation with no bends. (See Figure 4)**

3. Position FlexHead Assembly

- A. Bend the FlexHead hose assembly to hold the desired location. The FlexHead has a three inch (3") minimum bend radius per UL guidelines. **Do not over bend or torque the FlexHead hose assembly. (See Figure 5)**
- B. Insert outlet fitting end of FlexHead unit into prepared hole in concrete ceiling or wall with FlexHead clamp #UH attached. *Penetration through the ceiling or wall shall be acceptable by authority having jurisdiction.*
- C. From opposite side of the ceiling or wall attach sprinkler head, properly prepared with teflon tape and sealant to FlexHead outlet fitting per NFPA and sprinkler head manufacturer guidelines. Do not torque or twist FlexHead during installation process.
- D. Adjust the sprinkler head to the desired position. Tighten the attachment bolt on FlexHead Clamp #UH clockwise until tight on outlet fitting of FlexHead Hose assembly. **(See Figure 6)**

4. Complete Installation

- A. Test installation of sprinkler system for any leaks per NFPA guidelines. **(See Figure 7)**