



## H-Block Mini Special Features

ASC Engineered Solutions™ H-Block Mini Rooftop Support Systems provide a full complement of products to support gas and refrigeration piping, plumbing, multiple lines, electrical conduit, ductwork, HVAC and many other applications.

H-Block Mini supports are pre-assembled and are suitable for installation on most types of roofing material and other flat surfaces.

- Economical
- Versatile
- Single pipe application use
- Mounting and supporting without losing strength or integrity
- Made from 100% post-consumer recycled materials
- Corners coated with high visibility safety ANSI #Z535.1-1998 orange



Photo depicts H-Block support

### About ASC Engineered Solutions

ASC Engineered Solutions is defined by quality—in its products, services and support. With nearly 2,000 employees, the company's portfolio of precision-engineered piping support, valves and connections provides products to more than 4,000 customers across industries, such as mechanical, industrial, fire protection, oil and gas, and commercial and residential construction. Its portfolio of leading brands includes ABZ Valve®, AFCON®, Anvil®, Anvil EPS, Anvil Services, Basic-PSA, Beck®, Catawissa, Cooplet®, FlexHead®, FPPI®, Gruvlok®, J.B. Smith, Merit®, North Alabama Pipe, Quadrant®, SCI®, Sharpe®, SlideLOK®, SPF®, SprinkFLEX®, Trenton Pipe and VEP. With headquarters in Oak Brook, IL, ASC also has ISO 9001:2015 certified production facilities in PA, TN, IL, TX, AL, LA, KS, and RI.



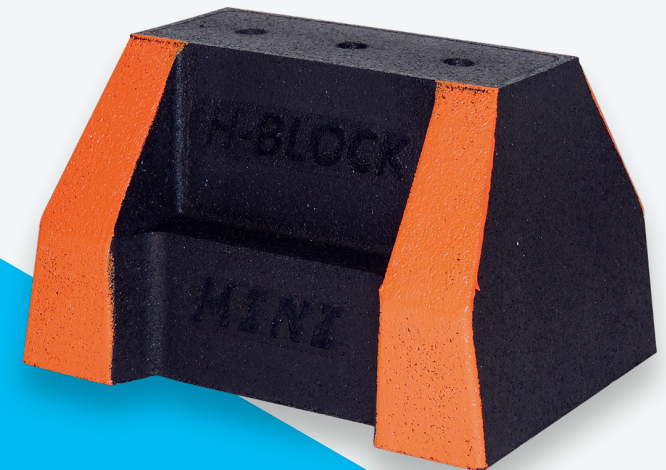
[asc-es.com](http://asc-es.com)

Building connections that last™

ASC-BRO-H-Block Mini Rooftop Support Systems-v01 | 11.23



## H-Block Mini Rooftop Support Systems



**HAYDON®**

# H-Block Mini Rooftop Support Systems

Long Term  
Rooftop Solution

**HAYDON**

## Cost Effective

- No deterioration
- 100% recycled material
- UV resistant
- Pallet quantity available

## Lightweight

- 2.5 – 4 lbs.
- Roof Load Capacity:  
125 – 400 lbs.

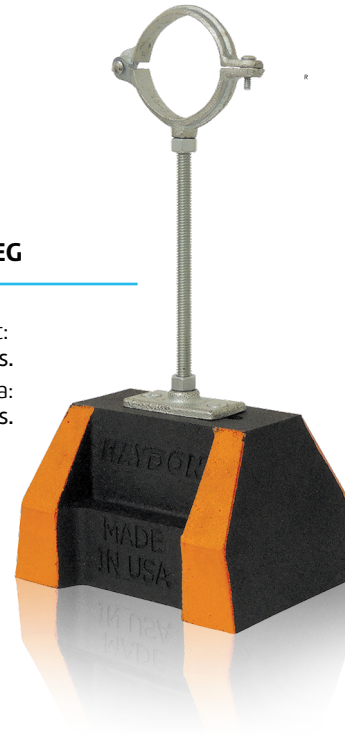


### HBM-Mini Base Only

Weight:  
2.5 lbs.  
Load Data:  
400 lbs.

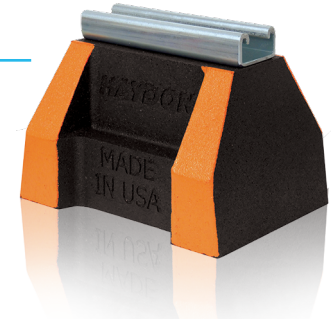
### HBM-HPC-2 IN-EG

Weight:  
2.7 – 3.3 lbs.  
Load Data:  
125 lbs.



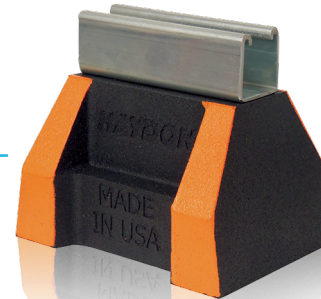
### HBM-5-H-164-PG

Weight:  
2.5 lbs.  
Load Data:  
400 lbs.



### HBM-5-H-132-PG

Weight:  
3.4 lbs.  
Load Data:  
400 lbs.



### HBM-CE5-10-12-H-132-PG

Weight:  
4.0 lbs.  
Load Data:  
175 lbs.



For more information contact your  
local ASC Engineered Solutions  
Sales Representative.

LEED Certifiable, Buy American Act Compliant, and American Reinvestment Recovery Act A.R.R.A. Compliant. Tested by an Accredited Independent Laboratory for: ASTM D575 Method B – Modified – Compression/Deflection, ASTM D1171 Modified – Ozone Resistance, and Freeze/Thaw Environmental Simulation.



asc-es.com

Building connections that last™

