

HB-Mega-Support with B-620-Sq Electro-Galvanized Steel Post Base HB-Mega Series

The HB-Mega Series is UV resistant and suitable for installations on all types of roofing surfaces and on ground applications and can be used as a curb (sleeper) replacement. The HB-MEGA series can support natural gas, refrigeration, light to heavier pipe hanger support systems, and Adjustable and Fixed Duct Support Systems.

Specifications

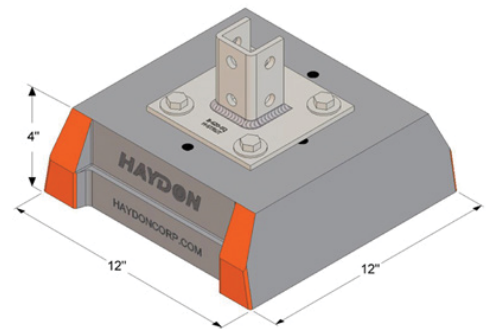
Materials

- HB-MEGA is 100% Recycled Rubber
- All 4 corners coated with ANSI #2535.1-1998 orange

Testing

Rooftop Supports Have Been Tested By An Accredited Independent Laboratory To The Following:

- ASTM D575 Method B – Modified – Compression/Deflection
- ASTM D1171 Modified – Ozone Resistance
- Freeze/Thaw Environmental Simulation



HB-Mega-Support with B-620-Sq Electro-Galvanized Steel Post Base

Model No.	Height	Width	Base Length	Weight (Lbs)	Uniform Load Capacity (Lbs)*	Safety Factor	Square Inches
HB-Mega-PBSQ-EG	4" (101mm)	12" (305 mm)	12" (305 mm)	18.7	2,100*	3.5	90



**This load is only for the capacity of the components in this assembly. Please consult roofing manufacturer or engineer for roof load capacity.

Strut Torque Setting – All load capacities stated herein are based on the use of Haydon Grip Lock Nuts tightened to the torque values shown in technical section. When attaching strut to H-Block recommended bolt torque settings 10 to 12 ft-lbs.

Complies with MSS-SP-58-2018 (Type 64).



PROJECT INFORMATION	APPROVAL STAMP
Project:	Approved
Address:	Approved as noted
Contractor:	Not approved
Engineer:	Remarks:
Submittal Date:	
Notes 1:	
Notes 2:	