

HB-Mega Series HB-Mega-Base Only



The HB-Mega Series is UV resistant and suitable for installations on all types of roofing surfaces and on ground applications and can be used as a curb (sleeper) replacement. The HB-MEGA series can support natural gas, refrigeration, light to heavier pipe hanger support systems, and Adjustable and Fixed Duct Support Systems.

Specifications

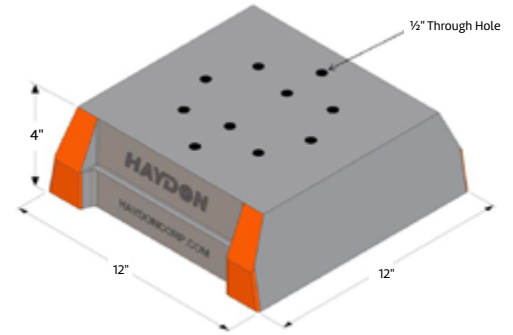
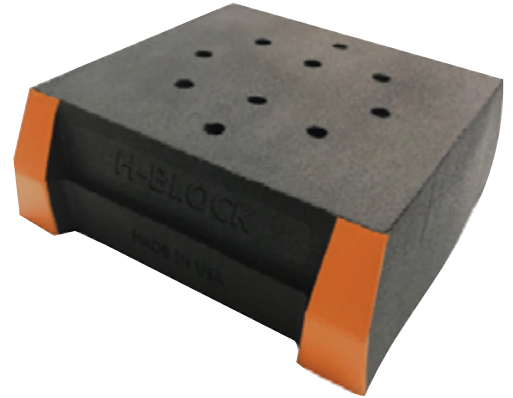
Material

- HB-MEGA is 100% Recycled Rubber
- 4 corners coated with ANSI #2535.1-1998 orange

Testing

Rooftop Supports Have Been Tested By An Accredited Independent Laboratory To The Following:

- ASTM D575 Method B – Modified – Compression/Deflection
- ASTM D1171 Modified – Ozone Resistance
- Freeze/Thaw Environmental Simulation



Base Area:
Shown = 90 Sq. In. For Use in bearing calculations.

HB-Mega-Base Only

| Model No. | Height | Width | Base Length | Weight (Lbs) | Uniform Load Capacity (Lbs)* | Safety Factor | Square Inches |
|-------------------|----------------|-----------------|-----------------|--------------|------------------------------|---------------|---------------|
| HB-Mega-Base Only | 4" (101 mm) | 12" (305 mm) | 12" (305 mm) | 14.8 | 2,100* | 3.5 | 90 |

*This load is only for the capacity of the components in this assembly. Please consult roofing manufacturer or engineer for roof load capacity. Complies with MSS-SP-58-2018.



| PROJECT INFORMATION | APPROVAL STAMP |
|---------------------|-------------------|
| Project: | Approved |
| Address: | Approved as noted |
| Contractor: | Not approved |
| Engineer: | Remarks: |
| Submittal Date: | |
| Notes 1: | |
| Notes 2: | |