

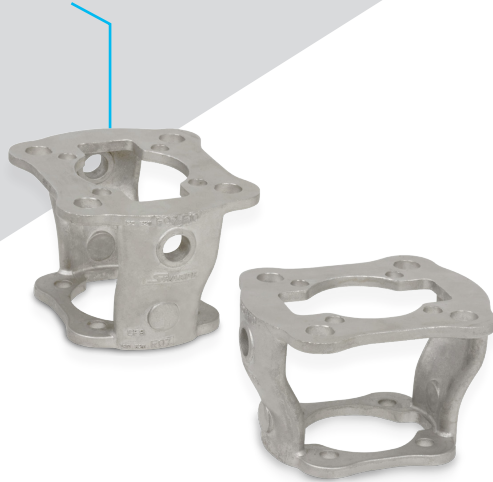
Building connections that last™



Sharpe® Cast Mounting Brackets

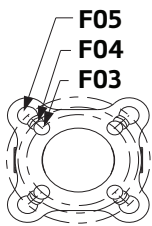


Sharpe® Cast Mounting Brackets



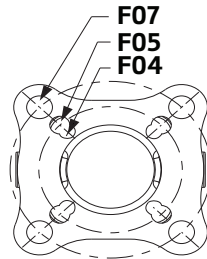
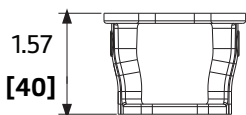
Material: CF8M 316 Stainless Steel
ISO Sizes: F03 to F12

- Two opposing holes for locking during maintenance and installation (special coupler required)
- Open design allows for viewing of stem position
- Access to stem nut without removing of actuator
- Casting Markings: Sharpe® logo, ISO Size, and material grade



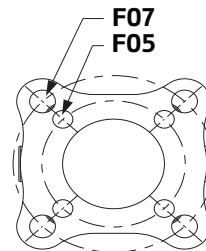
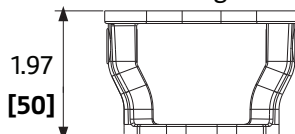
F03 - F030405

0.25 LB
0.1 kg



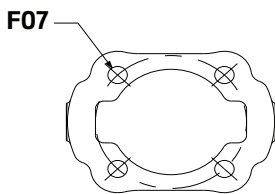
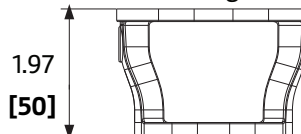
F04 - F040507

0.6 LB
0.3 kg



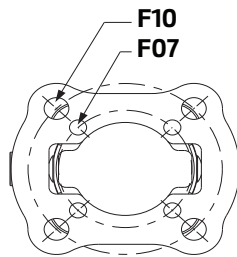
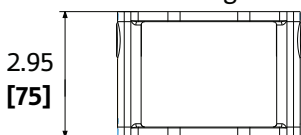
F05 - F0507

0.6 LB
0.3 kg



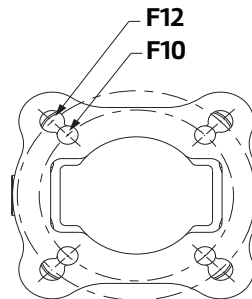
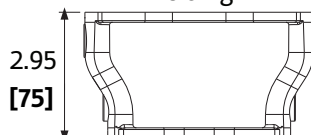
F07 - F07

1.7 LB
0.8 kg



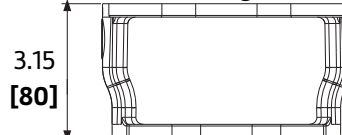
F07 - F0710

2.0 LB
0.9 kg



F10-F1012

2.87 LB
1.3 kg



About ASC Engineered Solutions

ASC Engineered Solutions is defined by quality—in its products, services and support. With more than 1,400 employees, the company's portfolio of precision-engineered piping support, valves and connections provides products to more than 4,000 customers across industries, such as mechanical, industrial, fire protection, oil and gas, and commercial and residential construction. Its portfolio of leading brands includes ABZ Valve®, AFCON®, Anvil®, Anvil EPS, Anvil Services, Basic-PSA, Beck®, Catawissa, Cooplet®, FlexHead®, FPPI®, Gruklok®, J.B. Smith, Merit®, North Alabama Pipe, Quadrant®, SCI®, Sharpe®, SlideLOK®, SPF® and SprinkFLEX®. With headquarters in Commerce, CA, and Exeter, NH, ASC also has ISO 9001:2015 certified production facilities in PA, TN, IL, TX, AL, LA, KS, and RI.



asc-es.com

Building connections that last™

FC-DS-Cast-Mounting-Brackets-v01 20211011

