

Building connections that last™



SCI® COOPLET®

Weld Outlets & Adapter Nipples






COOPLET® Weld Outlets & Adapter Nipples



Weld Outlet Specifications

-  Branded COOPLET® Weld Outlets are UL Listed
- COOPLET® Weld Outlets (Threaded) conform to ASTM A-106, ASME B1.20.1
- COOPLET® Grooved Weld Outlets are made from Sch 40 Pipe, ASTM A-53 Grade A
- COOPLET® Grooved Weld Outlets size-on-size are UL Listed Only
- All Grooves are cut grooved per AWWA C606
- ProPak™ Packaging
- Intended for use on fire protection systems

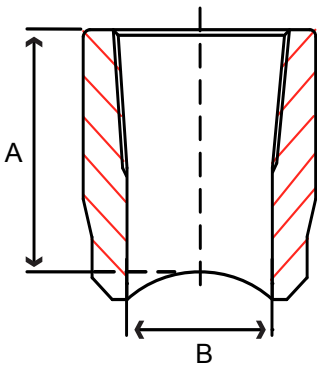
COOPLET® Weld Outlets are UL Listed for use on Sch 10, Sch 40 and the following sprinkler pipe

Pipe Name	Manufacturers
Dyna- Thread®, Central- Thread®, XL®, XL-II®, Dyna-Flow®, Super 40®, Super- Flo®, TL®, Central 7®, BLT®	Allied Tube and Conduit Corp.
Eddylite®, Eddy Flow®, Eddy Thread 40°	Bull Moose Tube Co.
Gal-7°	IDOD Systems Co.
EZ-Flow®	Northwest Pipe Company
WLS®, Mega Flow®, Mega- Thread®, MLT®, GL®	Wheatland Tube Company
Steady Flow®, Steady Thread®	Welded Tube Corp.
Fire-Flo®, Ez- Thread®	Youngstown Tube Co.
Tex- Flow®	Tex- Tube International
Fire Line Flow®, Rapid Thread®, Rapid-Thread Light®	Western International Forest Products Inc.

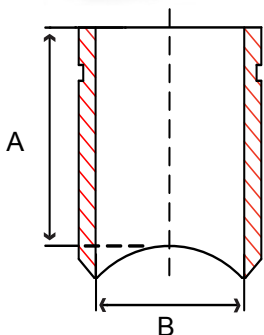
Adapter Nipple Specifications

- Sch 40 COOPLET® Adapter Nipples conform to ASTM A-53, Grade A, ASME B1.20.1, ASME B36.10, and AWWA C-606
- Sch 80 COOPLET® Adapter Nipples conform to ASTM A-106, ASME B1.20.1, ASME B36.10, and AWWA C-606
- All grooves are cut grooved per AWWA 606

Fig. 61FT1 – Threaded Weld Outlet



Size in	Pipe Run Size	Part Number	A in	B in	Packing		Weight lb
					Inner	Master	
1/2	1 to 1-1/2	61FT1004010	1.063	0.750	50	400	0.1
1/2	2 to 2-1/2	61FT1004020	1.063	0.750	50	400	0.1
1/2	3 to 8	61FT1004030	1.063	0.750	50	400	0.1
3/4	1 to 1-1/2	61FT1006010	1.125	0.875	50	300	0.2
3/4	2 to 2-1/2	61FT1006020	1.125	0.875	50	300	0.2
3/4	2-1/2	61FT1006024	1.125	0.875	50	300	0.2
3/4	3 to 8	61FT1006030	1.125	0.875	50	300	0.2
1	1-1/4 to 1-1/2	61FT1010012	1.250	1.125	50	200	0.2
1	1-1/2	61FT1010014	1.250	1.125	50	200	0.2
1	2 to 2-1/2	61FT1010020	1.250	1.125	50	200	0.2
1	2-1/2	61FT1010024	1.250	1.125	50	200	0.2
1	3 to 4	61FT1010030	1.250	1.125	50	200	0.2
1	5 to 8	61FT1010060	1.250	1.125	50	200	0.2
1-1/4	1-1/2	61FT1012014	1.375	1.500	70	140	0.3
1-1/4	2	61FT1012020	1.375	1.500	70	140	0.3
1-1/4	2-1/2	61FT1012024	1.375	1.500	70	140	0.3
1-1/4	3 to 4	61FT1012030	1.375	1.500	70	140	0.3
1-1/4	5 to 8	61FT1012060	1.375	1.500	70	140	0.3
1-1/2	2	61FT1014020	1.625	1.625	50	100	0.5
1-1/2	2-1/2	61FT1014024	1.625	1.625	50	100	0.5
1-1/2	3	61FT1014030	1.625	1.625	50	100	0.5
1-1/2	4 to 5	61FT1014040	1.625	1.625	50	100	0.5
1-1/2	6 to 8	61FT1014060	1.625	1.625	50	100	0.5
2	2-1/2	61FT1020024	1.750	2.000	25	50	0.8
2	3	61FT1020030	1.750	2.000	25	50	0.8
2	4 to 5	61FT1020040	1.750	2.000	25	50	0.8
2	6 to 8	61FT1020060	1.750	2.000	25	50	0.8
2-1/2	3	61FT1024030	2.215	2.500	15	30	1.4
2-1/2	4	61FT1024040	2.215	2.500	15	30	1.4
2-1/2	6	61FT1024060	2.215	2.500	15	30	1.4
2-1/2	8	61FT1024080	2.215	2.500	15	30	1.4
3	4	61FT1030040	2.500	3.000	8	16	2.4
3	6	61FT1030060	2.500	3.000	8	16	2.3
3	8	61FT1030080	2.500	3.000	8	16	2.3
4	6	61FT1040060	3.000	4.000	4	8	4.1
4	8	61FT1040080	3.000	4.000	4	8	4.0



All Grooves are Cut Grooved

Fig. 61CG1 – Grooved Weld Outlet (size on size)*

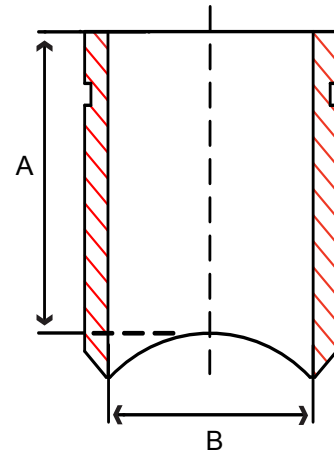
Size in	Pipe Run Size	Part Number	A in	B in	Packing		Weight lb
					Inner	Master	
1-1/4	1-1/4	61CG1012012	3.00	1.38	40	80	0.5
1-1/2	1-1/2	61CG1014014	3.00	1.61	25	50	0.6
2	2	61CG1020020	3.00	2.00	16	32	0.8
2-1/2	2-1/2	61CG1024024	3.00	2.50	12	24	1.3
3	3	61CG1030030	3.00	3.00	6	12	1.8
4	4	61CG1040040	4.00	4.00	4	8	3.5
6	6	61CG1060060	4.00	6.00	-	2	6.5
8	8	61CG1080080	4.00	8.00	-	2	11.6

*Size on Size Grooved Weld Outlets are UL Listed Only



Fig. 61CG1 – Grooved Weld Outlet

Size in	Pipe Run Size	Part Number	A in	B in	Packing		Weight lb
					Inner	Master	
1-1/4	1-1/2	61CG1012014	3.00	1.38	40	80	0.5
1-1/4	2	61CG1012020	3.00	1.38	40	80	0.5
1-1/4	2-1/2	61CG1012024	3.00	1.38	40	80	0.5
1-1/4	3	61CG1012030	3.00	1.38	40	80	0.5
1-1/4	4 to 5	61CG1012040	3.00	1.38	40	80	0.5
1-1/4	6 to 8	61CG1012060	3.00	1.38	40	80	0.5
1-1/2	2	61CG1014020	3.00	1.61	25	50	0.6
1-1/2	2-1/2	61CG1014024	3.00	1.61	25	50	0.6
1-1/2	3	61CG1014030	3.00	1.61	25	50	0.6
1-1/2	4 to 5	61CG1014040	3.00	1.61	25	50	0.6
1-1/2	6 to 8	61CG1014060	3.00	1.61	25	50	0.6
2	2-1/2	61CG1020024	3.00	2.00	16	32	0.8
2	3	61CG1020030	3.00	2.00	16	32	0.8
2	4 to 5	61CG1020040	3.00	2.00	16	32	0.8
2	6	61CG1020060	3.00	2.00	16	32	0.8
2	8	61CG1020080	3.00	2.00	16	32	0.8
2-1/2	3	61CG1024030	3.00	2.50	12	24	1.3
2-1/2	4 to 5	61CG1024040	3.00	2.50	12	24	1.3
2-1/2	6	61CG1024060	3.00	2.50	12	24	1.3
2-1/2	8	61CG1024080	3.00	2.50	12	24	1.3
3	4	61CG1030040	3.00	3.00	6	12	1.8
3	6	61CG1030060	3.00	3.00	6	12	1.8
3	8	61CG1030080	3.00	3.00	6	12	1.7
4	6	61CG1040060	4.00	4.00	4	8	3.5
4	8	61CG1040080	4.00	4.00	4	8	3.4
6	8	61CG1060080	4.00	6.00	-	2	6.5



All Grooves are Cut Grooved

COOPLET®

Fig. 61GB4 – Schedule 40 Grooved x Bevel Adapter Nipple

Size in	Part Number	A in	B in	Master	Weight lb
1 x 3	61GB4010030	3.00	1.32	150	0.3
1 x 4	61GB4010040	4.00	1.32	100	0.5
1-1/4 x 4	61GB4012040	4.00	1.66	50	0.6
1-1/2 x 4	61GB4014040	4.00	1.90	50	0.7
2 x 4	61GB4020040	4.00	2.38	25	1.1
2-1/2 x 4	61GB4024040	4.00	2.88	27	1.6
3 x 4	61GB4030040	4.00	3.50	18	2.4
4 x 6	61GB4040060	6.00	4.50	8	5.1
5 x 6	61GB4050060	6.00	5.56	2	6.6
6 x 6	61GB4060060	6.00	6.63	2	8.6
8 x 6	61GB4080060	6.00	8.63	2	13.2

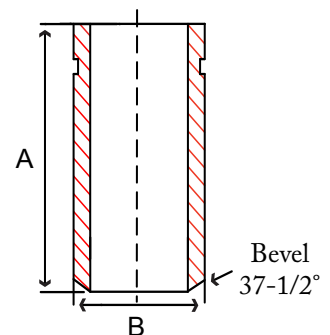


Fig. 61TG4 – Schedule 40 Threaded x Grooved Adapter Nipple



Size in	Part Number	A in	B in	TPI	Master	Weight lb
1 x 4	61TG4010040	4.00	1.32	11.5	100	0.5
1-1/4 x 4	61TG4012040	4.00	1.66	11.5	50	0.6
1-1/2 x 4	61TG4014040	4.00	1.90	11.5	50	0.7
1-1/2 x 12	61TG4014120	12.00	1.90	11.5	15	2.6
2 x 3	61TG4020030	3.00	2.38	11.5	50	0.7
2 x 4	61TG4020040	4.00	2.38	11.5	25	1.0
2 x 6	61TG4020060	6.00	2.38	11.5	25	1.7
2 x 8	61TG4020080	8.00	2.38	11.5	18	2.3
2 x 10	61TG4020100	10.00	2.38	11.5	14	2.9
2 x 12	61TG4020120	12.00	2.38	11.5	14	3.5
2-1/2 x 4	61TG4024040	4.00	2.88	8.0	27	1.6
2-1/2 x 12	61TG4024120	12.00	2.88	8.0	9	5.5
3 x 2-5/8	61TG4030025	2.62	3.50	8.0	24	1.3
3 x 3	61TG4030030	3.00	3.50	8.0	24	1.5
3 x 4	61TG4030040	4.00	3.50	8.0	18	2.1
3 x 6	61TG4030060	6.00	3.50	8.0	12	3.4
3 x 8	61TG4030080	8.00	3.50	8.0	8	4.7
3 x 10	61TG4030100	10.00	3.50	8.0	6	5.9
3 x 12	61TG4030120	12.00	3.50	8.0	6	7.2
4 x 3	61TG4040030	3.00	4.50	8.0	12	1.6
4 x 4	61TG4040040	4.00	4.50	8.0	12	2.6
4 x 6	61TG4040060	6.00	4.50	8.0	8	4.9
4 x 8	61TG4040080	8.00	4.50	8.0	5	6.7
4 x 10	61TG4040100	10.00	4.50	8.0	4	8.5
4 x 12	61TG4040120	12.00	4.50	8.0	4	10.3
5 x 6	61TG4050060	6.00	5.56	8.0	2	6.6
5 x 12	61TG4050120	12.00	5.56	8.0	1	13.9
6 x 6	61TG4060060	6.00	6.63	8.0	2	8.6
6 x 12	61TG4060120	12.00	6.63	8.0	1	18.1
8 x 6	61TG4080060	6.00	8.63	8.0	1	13.2
8 x 12	61TG4080120	12.00	8.63	8.0	1	27.5

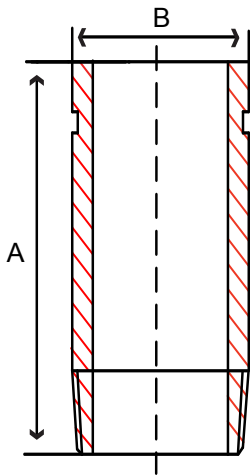


Fig. 61TG8 – Schedule 80 Threaded x Grooved Adapter Nipple

Size in	Part Number	A in	B in	TPI	Master	Weight lb
2 x 3	61TG8020030	3.00	2.38	11.5	50	1.1
2 x 4	61TG8020040	4.00	2.38	11.5	25	1.5
2 x 6	61TG8020060	6.00	2.38	11.5	25	2.3
2 x 8	61TG8020080	8.00	2.38	11.5	18	3.2
2 x 10	61TG8020100	10.00	2.38	11.5	12	4.0
2 x 12	61TG8020120	12.00	2.38	11.5	12	4.9
3 x 2-5/8	61TG8030025	2.62	3.50	8.0	24	1.9
3 x 3	61TG8030030	3.00	3.50	8.0	24	2.2
3 x 4	61TG8030040	4.00	3.50	8.0	18	3.0
3 x 6	61TG8030060	6.00	3.50	8.0	12	4.7
3 x 8	61TG8030080	8.00	3.50	8.0	8	6.5
3 x 10	61TG8030100	10.00	3.50	8.0	6	8.2
3 x 12	61TG8030120	12.00	3.50	8.0	6	9.9
4 x 3	61TG8040030	3.00	4.50	8.0	12	3.2
4 x 4	61TG8040040	4.00	4.50	8.0	12	4.5
4 x 6	61TG8040060	6.00	4.50	8.0	8	7.0
4 x 8	61TG8040080	8.00	4.50	8.0	5	9.5
4 x 10	61TG8040100	10.00	4.50	8.0	4	12.0
4 x 12	61TG8040120	12.00	4.50	8.0	4	14.5

COOPLET®

Fig. 61GG4 – Schedule 40 Grooved x Grooved Adapter Nipple

Size in	Part Number	A in	B in	Master	Weight lb
2 x 3	61GG4020030	3.00	2.38	50	0.8
2 x 4	61GG4020040	4.00	2.38	50	1.1
2 x 6	61GG4020060	6.00	2.38	25	1.7
2 x 8	61GG4020080	8.00	2.38	18	2.3
2 x 10	61GG4020100	10.00	2.38	14	2.9
2 x 12	61GG4020120	12.00	2.38	14	3.5
3 x 2-5/8	61GG4030025	2.62	3.50	24	1.5
3 x 3	61GG4030030	3.00	3.50	24	1.7
3 x 4	61GG4030040	4.00	3.50	18	2.4
3 x 6	61GG4030060	6.00	3.50	12	3.6
3 x 8	61GG4030080	8.00	3.50	8	4.9
3 x 10	61GG4030100	10.00	3.50	6	6.2
3 x 12	61GG4030120	12.00	3.50	6	7.4
4 x 3	61GG4040030	3.00	4.50	12	2.4
4 x 4	61GG4040040	4.00	4.50	12	3.3
4 x 6	61GG4040060	6.00	4.50	8	5.1
4 x 8	61GG4040080	8.00	4.50	5	6.9
4 x 10	61GG4040100	10.00	4.50	4	8.7
4 x 12	61GG4040120	12.00	4.50	4	10.3
5 x 6	61GG4050060	6.00	5.56	2	7.0
5 x 12	61GG4050120	12.00	5.56	1	14.0
6 x 6	61GG4060060	6.00	6.63	2	9.1
6 x 12	61GG4060120	12.00	6.63	1	18.2
8 x 6	61GG4080060	6.00	8.63	2	13.7
8 x 12	61GG4080120	12.00	8.63	1	27.4

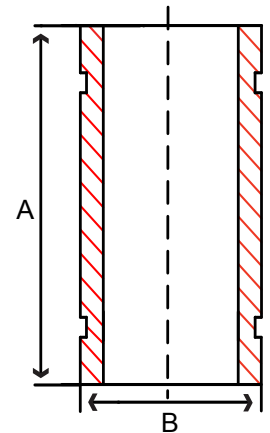


Fig. 61GG8 – Schedule 80 Grooved x Grooved Adapter Nipple

Size in	Part Number	A in	B in	Master	Weight lb
2 x 3	61GG8020030	3.00	2.38	50	1.1
2 x 4	61GG8020040	4.00	2.38	25	1.5
2 x 6	61GG8020060	6.00	2.38	25	2.4
2 x 8	61GG8020080	8.00	2.38	18	3.2
2 x 10	61GG8020100	10.00	2.38	12	4.1
2 x 12	61GG8020120	12.00	2.38	12	4.9
3 x 2-5/8	61GG8030025	2.62	3.50	24	2.1
3 x 3	61GG8030030	3.00	3.50	24	2.4
3 x 4	61GG8030040	4.00	3.50	18	3.3
3 x 6	61GG8030060	6.00	3.50	12	5.0
3 x 8	61GG8030080	8.00	3.50	8	6.7
3 x 10	61GG8030100	10.00	3.50	6	8.4
3 x 12	61GG8030120	12.00	3.50	6	10.1
4 x 3	61GG8040030	3.00	4.50	12	3.4
4 x 4	61GG8040040	4.00	4.50	12	4.7
4 x 6	61GG8040060	6.00	4.50	8	7.2
4 x 8	61GG8040080	8.00	4.50	5	9.7
4 x 10	61GG8040100	10.00	4.50	4	12.2
4 x 12	61GG8040120	12.00	4.50	4	14.7

COOPLET®

About ASC Engineered Solutions

ASC Engineered Solutions is defined by quality—in its products, services and support. With more than 1,400 employees, the company’s portfolio of precision-engineered piping support, valves and connections provides products to more than 4,000 customers across industries, such as mechanical, industrial, fire protection, oil and gas, and commercial and residential construction. Its portfolio of leading brands includes ABZ Valve®, AFCON®, Anvil®, Anvil EPS, Anvil Services, Basic-PSA, Beck®, Catawissa, Cooplet®, FlexHead®, FPPI®, Gruvlok®, J.B. Smith, Merit®, North Alabama Pipe, Quadrant®, SCI®, Sharpe®, SlideLOK®, SPF® and SprinkFLEX®. With headquarters in Commerce, CA, and Exeter, NH, ASC also has ISO 9001:2015 certified production facilities in PA, TN, IL, TX, AL, LA, KS, and RI.



asc-es.com

Building connections that last™

