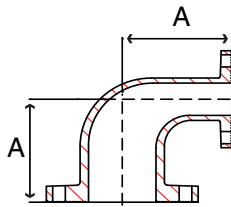


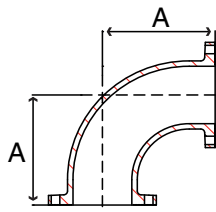
**Fig. 38E 1 – 90° Elbow**

| Size in | Part Number | A in | Weight lb |
|---------|-------------|------|-----------|
| 1-1/4   | 38E 1012D   | 3.8  | 9         |
| 2       | 38E 1020D   | 4.5  | 14        |
| 2-1/2   | 38E 1024D   | 5.0  | 19        |
| 3       | 38E 1030D   | 5.5  | 25        |
| 3-1/2   | 38E 1034D   | 6.0  | 25        |
| 4       | 38E 1040D   | 6.5  | 45        |
| 5       | 38E 1050D   | 7.5  | 52        |
| 6       | 38E 1060D   | 8.0  | 65        |
| 8       | 38E 1080    | 9.0  | 105       |
| 10      | 38E 1100    | 11.0 | 165       |
| 12      | 38E 1120    | 12.0 | 255       |
| 14      | 38E 1140    | 14.0 | 353       |
| 16      | 38E 1160    | 15.0 | 430       |
| 18      | 38E 1180    | 16.5 | 450       |
| 20      | 38E 1200    | 18.0 | 580       |
| 24      | 38E 1240    | 22.0 | 900       |



**Fig. 38RE1 – 90° Reducing Elbow**

| Size in   | Part Number  | A in | Weight lb |
|-----------|--------------|------|-----------|
| 3 x 2     | 38RE1030020D | 5.5  | 22        |
| 3 x 2-1/2 | 38RE1030024D | 5.5  | 22        |
| 4 x 2     | 38RE1040020D | 6.5  | 29        |
| 4 x 2-1/2 | 38RE1040024D | 6.5  | 31        |
| 4 x 3     | 38RE1040030D | 6.5  | 29        |
| 5 x 4     | 38RE1050040D | 7.5  | 50        |
| 6 x 3     | 38RE1060030D | 8.0  | 50        |
| 6 x 4     | 38RE1060040D | 8.0  | 55        |
| 6 x 5     | 38RE1060050D | 8.0  | 65        |
| 8 x 4     | 38RE1080040  | 9.0  | 80        |
| 8 x 5     | 38RE1080050  | 9.0  | 85        |
| 8 x 6     | 38RE1080060  | 9.0  | 85        |
| 10 x 6    | 38RE1100060  | 11.0 | 130       |
| 10 x 8    | 38RE1100080  | 11.0 | 150       |
| 12 x 6    | 38RE1120060  | 12.0 | 188       |
| 12 x 8    | 38RE1120080  | 12.0 | 185       |
| 12 x 10   | 38RE1120100  | 12.0 | 210       |
| 16 x 12   | 38RE1160120  | 15.0 | 310       |



**Fig. 38LE1 – 90° Long Radius Elbow**

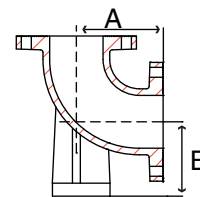
| Size in | Part Number | A in | Weight lb |
|---------|-------------|------|-----------|
| 3       | 38LE1030D   | 7.8  | 30        |
| 4       | 38LE1040D   | 9.0  | 50        |
| 6       | 38LE1060D   | 11.5 | 85        |
| 8       | 38LE1080    | 14.0 | 145       |
| 10      | 38LE1100    | 16.5 | 225       |
| 12      | 38LE1120    | 19.0 | 325       |
| 14      | 38LE1140    | 21.5 | 385       |
| 20      | 38LE1200    | 29.0 | 810       |
| 24      | 38LE1240    | 34.0 | 1,240     |

FLANGED



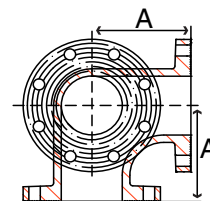
**Fig. 38BE1 – 90° Base Elbow**

| Size<br>in | Part Number | A<br>in | B<br>in | Weight<br>lb |
|------------|-------------|---------|---------|--------------|
| 3          | 38BE1030D   | 5.5     | 4.9     | 35           |
| 4          | 38BE1040D   | 6.5     | 5.5     | 55           |
| 6          | 38BE1060D   | 8.0     | 7.0     | 85           |
| 8          | 38BE1080    | 9.0     | 8.8     | 145          |
| 10         | 38BE1100    | 11.0    | 9.8     | 220          |
| 12         | 38BE1120    | 12.0    | 11.3    | 324          |
| 16         | 38BE1160    | 15.0    | 13.8    | 445          |



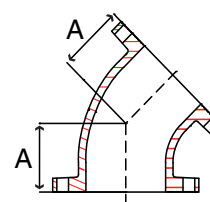
**Fig. 38OE1 – 90° Side Outlet Elbow**

| Size<br>in | Part Number | A<br>in | Weight<br>lb |
|------------|-------------|---------|--------------|
| 4          | 38OE1040D   | 6.5     | 60           |
| 6          | 38OE1060D   | 8.0     | 95           |



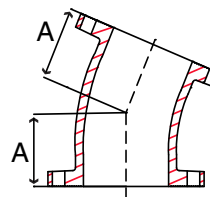
**Fig. 38F 1 – 45° Elbow**

| Size<br>in | Part Number | A<br>in | Weight<br>lb |
|------------|-------------|---------|--------------|
| 2          | 38F 1020D   | 2.5     | 12           |
| 2-1/2      | 38F 1024D   | 3.0     | 17           |
| 3          | 38F 1030D   | 3.0     | 20           |
| 4          | 38F 1040D   | 4.0     | 40           |
| 5          | 38F 1050D   | 4.5     | 45           |
| 6          | 38F 1060D   | 5.0     | 55           |
| 8          | 38F 1080    | 5.5     | 90           |
| 10         | 38F 1100    | 6.5     | 135          |
| 12         | 38F 1120    | 7.5     | 220          |
| 14         | 38F 1140    | 7.5     | 220          |
| 16         | 38F 1160    | 8.0     | 280          |
| 18         | 38F 1180    | 8.5     | 325          |
| 24         | 38F 1240    | 11.0    | 630          |



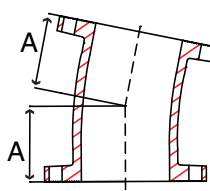
**Fig. 38TT1 – 22-1/2° Elbow**

| Size<br>in | Part Number | A<br>in | Weight<br>lb |
|------------|-------------|---------|--------------|
| 4          | 38TT1040D   | 4.0     | 40           |
| 6          | 38TT1060D   | 5.0     | 55           |
| 8          | 38TT1080    | 5.5     | 90           |
| 12         | 38TT1120    | 7.5     | 195          |

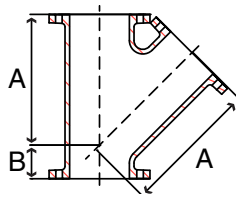


**Fig. 38EL1 – 11-1/4° Elbow**

| Size<br>in | Part Number | A<br>in | Weight<br>lb |
|------------|-------------|---------|--------------|
| 4          | 38EL1040D   | 4.0     | 40           |
| 6          | 38EL1060D   | 5.0     | 55           |
| 8          | 38EL1080    | 5.5     | 90           |
| 10         | 38EL1100    | 6.5     | 135          |
| 12         | 38EL1120    | 7.5     | 205          |

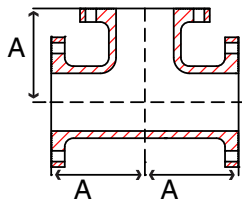


FLANGED



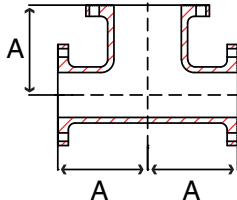
**Fig. 38LT1 – Lateral**

| Size<br>in | Part Number | A<br>in | B<br>in | Weight<br>lb |
|------------|-------------|---------|---------|--------------|
| 3          | 38LT1030D   | 10.0    | 3.0     | 45           |
| 4          | 38LT1040D   | 12.0    | 3.0     | 75           |
| 6          | 38LT1060D   | 14.5    | 3.5     | 120          |
| 8          | 38LT1080    | 17.5    | 4.5     | 200          |
| 10         | 38LT1100    | 20.5    | 5.0     | 335          |
| 12         | 38LT1120    | 24.5    | 5.5     | 515          |
| 16         | 38LT1160    | 30.0    | 6.5     | 805          |



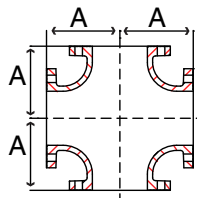
**Fig. 38T 1 – Tee**

| Size<br>in | Part Number | A<br>in | Weight<br>lb |
|------------|-------------|---------|--------------|
| 2          | 38T 1020D   | 4.5     | 20           |
| 2-1/2      | 38T 1024D   | 5.0     | 30           |
| 3          | 38T 1030D   | 5.5     | 40           |
| 4          | 38T 1040D   | 6.5     | 65           |
| 5          | 38T 1050D   | 7.5     | 85           |
| 6          | 38T 1060D   | 8.0     | 95           |
| 8          | 38T 1080    | 9.0     | 155          |
| 10         | 38T 1100    | 11.0    | 270          |
| 12         | 38T 1120    | 12.0    | 385          |
| 14         | 38T 1140    | 14.0    | 435          |
| 16         | 38T 1160    | 15.0    | 550          |
| 18         | 38T 1180    | 16.5    | 665          |
| 20         | 38T 1200    | 18.0    | 855          |
| 24         | 38T 1240    | 22.0    | 1,330        |



**Fig. 38BT1 – Bull Head Tee**

| Size<br>in | Part Number  | A<br>in | Weight<br>lb |
|------------|--------------|---------|--------------|
| 4 x 6      | 38BT1040060D | 8.00    | 88           |
| 6 x 8      | 38BT1060080  | 9.00    | 142          |
| 8 x 10     | 38BT1080100  | 11.00   | 240          |



**Fig. 38X 1 – Cross**

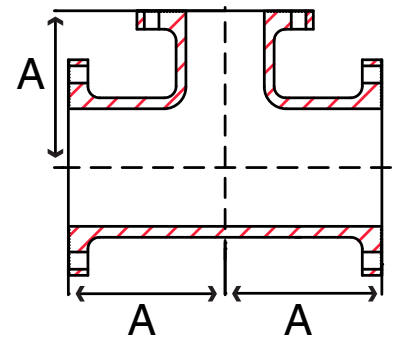
| Size<br>in | Part Number | A<br>in | Weight<br>lb |
|------------|-------------|---------|--------------|
| 3          | 38X 1030D   | 5.5     | 50           |
| 4          | 38X 1040D   | 6.5     | 80           |
| 6          | 38X 1060D   | 8.0     | 120          |
| 8          | 38X 1080    | 9.0     | 195          |
| 10         | 38X 1100    | 11.0    | 330          |
| 12         | 38X 1120    | 12.0    | 460          |
| 14         | 38X 1140    | 14.0    | 530          |
| 16         | 38X 1160    | 15.0    | 665          |
| 18         | 38X 1180    | 16.5    | 795          |
| 20         | 38X 1200    | 18.0    | 1,001        |
| 24         | 38X 1240    | 22.0    | 1,570        |

FLANGED

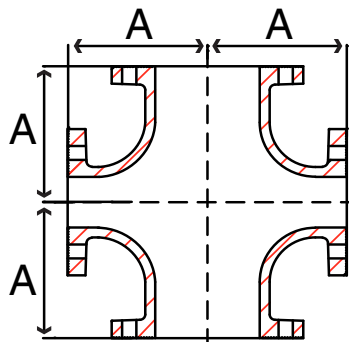


**Fig. 38RT1 – Reducing Tee cont.**

| Size<br>in    | Part Number     | A<br>in | Weight<br>lb |
|---------------|-----------------|---------|--------------|
| 2-1/2 x 1-1/2 | 38RT1024014D    | 5.0     | 29           |
| 2-1/2 x 2 x 2 | 38RT1024020020D | 5.0     | 29           |
| 2-1/2 x 2     | 38RT1024020D    | 5.0     | 50           |
| 3 x 2         | 38RT1030020D    | 5.5     | 35           |
| 3 x 2-1/2     | 38RT1030024D    | 5.5     | 34           |
| 4 x 2         | 38RT1040020D    | 6.5     | 50           |
| 4 x 2-1/2     | 38RT1040024D    | 6.5     | 55           |
| 4 x 3         | 38RT1040030D    | 6.5     | 60           |
| 5 x 2         | 38RT1050020D    | 7.5     | 85           |
| 5 x 4         | 38RT1050040D    | 7.5     | 85           |
| 6 x 2         | 38RT1060020D    | 8.0     | 85           |
| 6 x 3         | 38RT1060030D    | 8.0     | 85           |
| 6 x 4 x 4     | 38RT1060040040D | 8.0     | 90           |
| 6 x 4 x 6     | 38RT1060040060D | 8.0     | 95           |
| 6 x 4         | 38RT1060040D    | 8.0     | 90           |
| 6 x 5 x 5     | 38RT1060050050D | 8.0     | 85           |
| 6 x 5         | 38RT1060050D    | 8.0     | 110          |
| 8 x 3         | 38RT1080030     | 9.0     | 135          |
| 8 x 4         | 38RT1080040     | 9.0     | 135          |
| 8 x 4 x 8     | 38RT1080040080  | 9.0     | 140          |
| 8 x 5         | 38RT1080050     | 9.0     | 149          |
| 8 x 6         | 38RT1080060     | 9.0     | 145          |
| 8 x 6 x 6     | 38RT1080060060  | 9.0     | 145          |
| 8 x 6 x 8     | 38RT1080060080  | 9.0     | 160          |
| 10 x 3        | 38RT1100030     | 11.0    | 210          |
| 10 x 4        | 38RT1100040     | 11.0    | 202          |
| 10 x 6        | 38RT1100060     | 11.0    | 215          |
| 10 x 8        | 38RT1100080     | 11.0    | 225          |
| 10 x 8 x 8    | 38RT1100080080  | 11.0    | 240          |
| 10 x 8 x 10   | 38RT1100080100  | 11.0    | 262          |
| 12 x 6        | 38RT1120060     | 12.0    | 295          |
| 12 x 8        | 38RT1120080     | 12.0    | 310          |
| 12 x 10       | 38RT1120100     | 12.0    | 360          |
| 14 x 6        | 38RT1140060     | 14.0    | 375          |
| 14 x 10       | 38RT1140100     | 14.0    | 400          |
| 14 x 12       | 38RT1140120     | 14.0    | 425          |
| 16 x 10       | 38RT1160100     | 15.0    | 495          |
| 16 x 12       | 38RT1160120     | 15.0    | 520          |
| 18 x 6        | 38RT1180060     | 16.5    | 480          |
| 18 x 8        | 38RT1180080     | 16.5    | 495          |
| 18 x 12       | 38RT1180120     | 16.5    | 535          |
| 20 x 6        | 38RT1200060     | 18.0    | 610          |
| 20 x 12       | 38RT1200120     | 18.0    | 778          |
| 24 x 16       | 38RT1240160     | 22.0    | 915          |
| 24 x 18       | 38RT1240180     | 22.0    | 1220         |
| 24 x 20       | 38RT1240200     | 22.0    | 1255         |



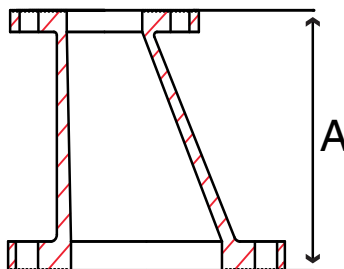
FLANGED



**Fig. 38RX1 – Reducing Cross**

| Size in | Part Number  | A in | Weight lb |
|---------|--------------|------|-----------|
| 6 x 4   | 38RX1060040D | 8.0  | 110       |
| 6 x 5   | 38RX1060050D | 8.0  | 110       |
| 8 x 4   | 38RX1080040  | 9.0  | 155       |
| 8 x 6   | 38RX1080060  | 9.0  | 165       |
| 10 x 4  | 38RX1100040  | 11.0 | 220       |
| 10 x 6  | 38RX1100060  | 11.0 | 240       |
| 10 x 8  | 38RX1100080  | 11.0 | 265       |
| 12 x 4  | 38RX1120040  | 12.0 | 310       |
| 12 x 8  | 38RX1120080  | 12.0 | 345       |
| 12 x 10 | 38RX1120100  | 12.0 | 415       |
| 14 x 6  | 38RX1140060  | 14.0 | 425       |
| 16 x 8  | 38RX1160080  | 15.0 | 520       |
| 18 x 14 | 38RX1180140  | 16.5 | 680       |
| 20 x 6  | 38RX1200060  | 18.0 | 745       |
| 20 x 10 | 38RX1200100  | 18.0 | 685       |
| 20 x 18 | 38RX1200180  | 18.0 | 945       |
| 24 x 18 | 38RX1240180  | 22.0 | 1365      |

FLANGED



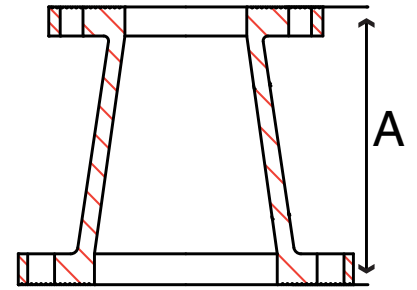
**Fig. 38ER1 – Eccentric Reducer**

| Size in   | Part Number  | A in | Weight lb |
|-----------|--------------|------|-----------|
| 3 x 2     | 38ER1030020D | 6.0  | 16        |
| 3 x 2-1/2 | 38ER1030024D | 6.0  | 20        |
| 4 x 2     | 38ER1040020D | 7.0  | 25        |
| 4 x 2-1/2 | 38ER1040024D | 7.0  | 28        |
| 4 x 3     | 38ER1040030D | 7.0  | 30        |
| 5 x 2-1/2 | 38ER1050024D | 8.0  | 35        |
| 5 x 4     | 38ER1050040D | 8.0  | 39        |
| 6 x 3     | 38ER1060030D | 9.0  | 40        |
| 6 x 4     | 38ER1060040D | 9.0  | 45        |
| 6 x 5     | 38ER1060050D | 9.0  | 50        |
| 8 x 4     | 38ER1080040  | 11.0 | 65        |
| 8 x 5     | 38ER1080050  | 11.0 | 70        |
| 8 x 6     | 38ER1080060  | 11.0 | 75        |
| 10 x 6    | 38ER1100060  | 12.0 | 90        |
| 10 x 8    | 38ER1100080  | 12.0 | 110       |
| 12 x 6    | 38ER1120060  | 14.0 | 130       |
| 12 x 8    | 38ER1120080  | 14.0 | 150       |
| 12 x 10   | 38ER1120100  | 14.0 | 170       |
| 14 x 10   | 38ER1140100  | 16.0 | 190       |
| 14 x 12   | 38ER1140120  | 16.0 | 220       |
| 16 x 12   | 38ER1160120  | 18.0 | 285       |

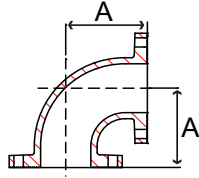


**Fig. 38CR1 – Concentric Reducer**

| Size<br>in | Part Number  | A<br>in | Weight<br>lb |
|------------|--------------|---------|--------------|
| 2 x 1-1/2  | 38CR1020014D | 5.0     | 12           |
| 2-1/2 x 2  | 38CR1024020D | 5.5     | 14           |
| 3 x 1-1/2  | 38CR1030014D | 6.0     | 15           |
| 3 x 2      | 38CR1030020D | 6.0     | 16           |
| 3 x 2-1/2  | 38CR1030024D | 6.0     | 20           |
| 4 x 2      | 38CR1040020D | 7.0     | 25           |
| 4 x 2-1/2  | 38CR1040024D | 7.0     | 28           |
| 4 x 3      | 38CR1040030D | 7.0     | 30           |
| 5 x 2      | 38CR1050020D | 8.0     | 26           |
| 5 x 2-1/2  | 38CR1050024D | 8.0     | 31           |
| 5 x 3      | 38CR1050030D | 8.0     | 32           |
| 5 x 4      | 38CR1050040D | 8.0     | 39           |
| 6 x 2      | 38CR1060020D | 9.0     | 34           |
| 6 x 2-1/2  | 38CR1060024D | 9.0     | 38           |
| 6 x 3      | 38CR1060030D | 9.0     | 40           |
| 6 x 4      | 38CR1060040D | 9.0     | 45           |
| 6 x 5      | 38CR1060050D | 9.0     | 50           |
| 8 x 3      | 38CR1080030  | 11.0    | 60           |
| 8 x 4      | 38CR1080040  | 11.0    | 65           |
| 8 x 5      | 38CR1080050  | 11.0    | 70           |
| 8 x 6      | 38CR1080060  | 11.0    | 75           |
| 10 x 4     | 38CR1100040  | 12.0    | 85           |
| 10 x 6     | 38CR1100060  | 12.0    | 93           |
| 10 x 8     | 38CR1100080  | 12.0    | 109          |
| 12 x 4     | 38CR1120040  | 14.0    | 130          |
| 12 x 6     | 38CR1120060  | 14.0    | 130          |
| 12 x 8     | 38CR1120080  | 14.0    | 151          |
| 12 x 10    | 38CR1120100  | 14.0    | 170          |
| 14 x 6     | 38CR1140060  | 16.0    | 185          |
| 14 x 8     | 38CR1140080  | 16.0    | 175          |
| 14 x 10    | 38CR1140100  | 16.0    | 194          |
| 14 x 12    | 38CR1140120  | 16.0    | 223          |
| 16 x 8     | 38CR1160080  | 18.0    | 210          |
| 16 x 10    | 38CR1160100  | 18.0    | 258          |
| 16 x 12    | 38CR1160120  | 18.0    | 310          |
| 16 x 14    | 38CR1160140  | 18.0    | 279          |
| 18 x 6     | 38CR1180060  | 19.0    | 195          |
| 18 x 10    | 38CR1180100  | 19.0    | 265          |
| 18 x 14    | 38CR1180140  | 19.0    | 310          |
| 18 x 16    | 38CR1180160  | 19.0    | 340          |
| 20 x 6     | 38CR1200060  | 20.0    | 345          |
| 20 x 12    | 38CR1200120  | 20.0    | 345          |
| 20 x 16    | 38CR1200160  | 20.0    | 390          |
| 20 x 18    | 38CR1200180  | 20.0    | 410          |
| 24 x 10    | 38CR1240100  | 24.0    | 460          |
| 24 x 12    | 38CR1240120  | 24.0    | 480          |
| 24 x 14    | 38CR1240140  | 24.0    | 490          |
| 24 x 16    | 38CR1240160  | 24.0    | 525          |
| 24 x 18    | 38CR1240180  | 24.0    | 550          |
| 24 x 20    | 38CR1240200  | 24.0    | 590          |

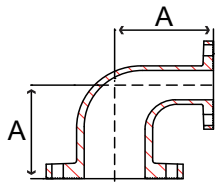


FLANGED



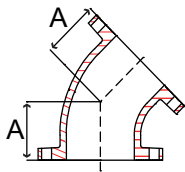
**Fig. 38E 2 – 90° Elbow**

| Size<br>in | Part Number | A<br>in | Weight<br>lb |
|------------|-------------|---------|--------------|
| 3          | 38E 2030    | 6.0     | 40           |
| 4          | 38E 2040    | 7.0     | 65           |
| 6          | 38E 2060    | 8.5     | 105          |
| 8          | 38E 2080    | 10.0    | 185          |
| 10         | 38E 2100    | 11.5    | 296          |



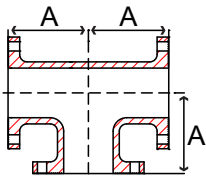
**Fig. 38RE2 – 90° Reducing Elbow**

| Size<br>in | Part Number | A<br>in | Weight<br>lb |
|------------|-------------|---------|--------------|
| 4 x 2-1/2  | 38RE2040024 | 7.0     | 48           |
| 6 x 4      | 38RE2060040 | 8.5     | 95           |
| 8 x 6      | 38RE2080060 | 10.0    | 161          |



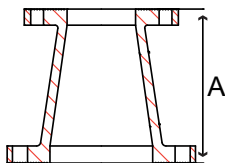
**Fig. 38F 2 – 45° Elbow**

| Size<br>in | Part Number | A<br>in | Weight<br>lb |
|------------|-------------|---------|--------------|
| 3          | 38F 2030    | 3.5     | 35           |
| 4          | 38F 2040    | 4.5     | 58           |
| 6          | 38F 2060    | 5.5     | 103          |
| 8          | 38F 2080    | 6.0     | 158          |



**Fig. 38T 2 – Tee**

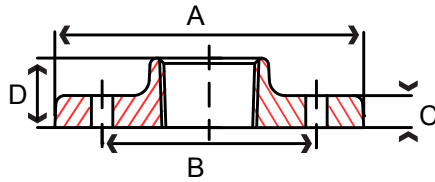
| Size<br>in | Part Number | A<br>in | Weight<br>lb |
|------------|-------------|---------|--------------|
| 2-1/2      | 38T 2024    | 5.5     | 46           |
| 3          | 38T 2030    | 6.0     | 58           |
| 4          | 38T 2040    | 7.0     | 99           |
| 5          | 38T 2050    | 8.0     | 135          |
| 6          | 38T 2060    | 8.5     | 180          |
| 8          | 38T 2080    | 10.0    | 280          |
| 10         | 38T 2100    | 11.5    | 430          |
| 12         | 38T 2120    | 13.0    | 620          |



**Fig. 38CR2 – Concentric Reducer**

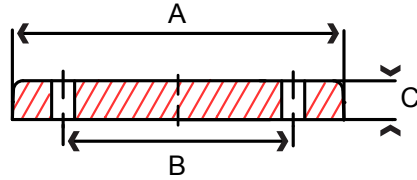
| Size<br>in | Part Number | A<br>in | Weight<br>lb |
|------------|-------------|---------|--------------|
| 4 x 2      | 38CR2040020 | 7.0     | 36           |
| 4 x 3      | 38CR2040030 | 7.0     | 45           |
| 6 x 4      | 38CR2060040 | 9.0     | 77           |
| 6 x 5      | 38CR2060050 | 9.0     | 85           |
| 8 x 6      | 38CR2080060 | 11.0    | 130          |
| 10 x 8     | 38CR2100080 | 12.0    | 190          |

FLANGED



**Fig. 17TH1 & 18TH1 – 150 lb. Threaded Companion Flange**

| Size<br>in | Part Number |            | A<br>in | B<br>in | C<br>in | D<br>in | Bolt Hole<br>Size | Number of<br>Bolt Holes | Weight<br>lb |
|------------|-------------|------------|---------|---------|---------|---------|-------------------|-------------------------|--------------|
|            | Black       | Galvanized |         |         |         |         |                   |                         |              |
| 1/2        | 17TH1004    | 18TH1004   | 3.50    | 2.38    | 0.50    | 0.75    | 5/8               | 4                       | 1            |
| 3/4        | 17TH1006    | 18TH1006   | 3.89    | 2.75    | 0.50    | 0.75    | 5/8               | 4                       | 1            |
| 1          | 17TH1010    | 18TH1010   | 4.25    | 3.12    | 0.44    | 0.75    | 5/8               | 4                       | 1            |
| 1-1/4      | 17TH1012    | 18TH1012   | 4.62    | 3.50    | 0.50    | 0.81    | 5/8               | 4                       | 2            |
| 1-1/2      | 17TH1014    | 18TH1014   | 5.00    | 3.88    | 0.56    | 0.88    | 5/8               | 4                       | 3            |
| 2          | 17TH1020    | 18TH1020   | 6.00    | 4.75    | 0.62    | 1.00    | 3/4               | 4                       | 4            |
| 2-1/2      | 17TH1024    | 18TH1024   | 7.00    | 5.50    | 0.69    | 1.12    | 3/4               | 4                       | 6            |
| 3          | 17TH1030    | 18TH1030   | 7.50    | 6.00    | 0.75    | 1.19    | 3/4               | 4                       | 8            |
| 4          | 17TH1040    | 18TH1040   | 9.00    | 7.50    | 0.94    | 1.31    | 3/4               | 8                       | 12           |
| 5          | 17TH1050    | 18TH1050   | 10.00   | 8.50    | 0.94    | 1.44    | 7/8               | 8                       | 14           |
| 6          | 17TH1060    | 18TH1060   | 11.00   | 9.50    | 1.00    | 1.56    | 7/8               | 8                       | 16           |
| 8          | 17TH1080    | 18TH1080   | 13.50   | 11.75   | 1.12    | 1.75    | 7/8               | 8                       | 28           |
| 10         | 17TH1100    | 18TH1100   | 16.00   | 14.25   | 1.19    | 1.94    | 1                 | 12                      | 38           |
| 12         | 17TH1120    | 18TH1120   | 19.00   | 17.00   | 1.25    | 2.19    | 1                 | 12                      | 55           |

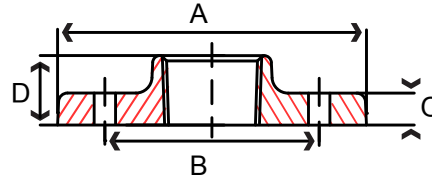


**Fig. 17BL1 & 18BL1 – 150 lb. Blind Flange**

| Size<br>in | Part Number |            | A<br>in | B<br>in | C<br>in | Bolt Hole<br>Size | Number of<br>Bolt Holes | Weight<br>lb |
|------------|-------------|------------|---------|---------|---------|-------------------|-------------------------|--------------|
|            | Black       | Galvanized |         |         |         |                   |                         |              |
| 1          | 17BL1010    | -          | 4.25    | 3.12    | 0.44    | 5/8               | 4                       | 2            |
| 1-1/4      | 17BL1012    | 18BL1012   | 4.62    | 3.50    | 0.50    | 5/8               | 4                       | 2            |
| 1-1/2      | 17BL1014    | -          | 5.00    | 3.88    | 0.56    | 5/8               | 4                       | 4            |
| 2          | 17BL1020    | 18BL1020   | 6.00    | 4.75    | 0.62    | 3/4               | 4                       | 5            |
| 2-1/2      | 17BL1024    | 18BL1024   | 7.00    | 5.50    | 0.69    | 3/4               | 4                       | 7            |
| 3          | 17BL1030    | 18BL1030   | 7.50    | 6.00    | 0.75    | 3/4               | 4                       | 9            |
| 3-1/2      | 17BL1034    | 18BL1034   | 8.50    | 7.00    | 0.81    | 3/4               | 8                       | 14           |
| 4          | 17BL1040    | 18BL1040   | 9.00    | 7.50    | 0.94    | 3/4               | 8                       | 15           |
| 5          | 17BL1050    | 18BL1050   | 10.00   | 8.50    | 0.94    | 7/8               | 8                       | 18           |
| 6          | 17BL1060    | 18BL1060   | 11.00   | 9.50    | 1.00    | 7/8               | 8                       | 23           |
| 8          | 17BL1080    | 18BL1080   | 13.50   | 11.75   | 1.12    | 7/8               | 8                       | 37           |
| 10         | 17BL1100    | 18BL1100   | 16.00   | 14.25   | 1.19    | 1                 | 12                      | 59           |
| 12         | 17BL1120    | 18BL1120   | 19.00   | 17.00   | 1.25    | 1                 | 12                      | 89           |
| 14         | 17BL1140    | -          | 21.00   | 18.75   | 1.38    | 1-1/8             | 12                      | 101          |
| 16         | 17BL1160    | -          | 23.50   | 21.25   | 1.44    | 1-1/8             | 16                      | 152          |
| 18         | 17BL1180    | -          | 25.00   | 22.75   | 1.56    | 1-1/4             | 16                      | 172          |
| 20         | 17BL1200    | -          | 27.50   | 25.00   | 1.69    | 1-1/4             | 20                      | 226          |
| 24         | 17BL1240    | -          | 32.00   | 29.50   | 1.88    | 1-3/8             | 20                      | 355          |

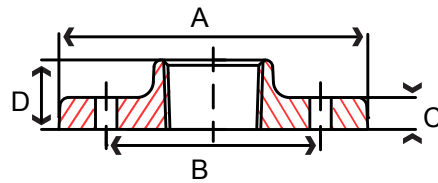
FLANGED




**Fig. 17RT1 & 18RT1 – 150 lb. Reducing Companion Flange**

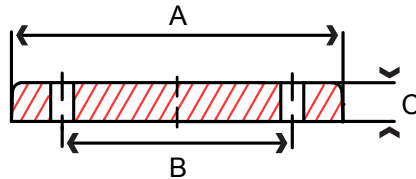
| Size<br>in     | Part Number |             | A<br>in | B<br>in | C<br>in | D<br>in | Bolt Hole<br>Size | Number of<br>Bolt Holes | Weight<br>lb |
|----------------|-------------|-------------|---------|---------|---------|---------|-------------------|-------------------------|--------------|
|                | Black       | Galvanized  |         |         |         |         |                   |                         |              |
| 1 x 4-5/8      | 17RT1010045 | -           | 4.62    | 3.50    | 0.50    | 0.81    | 5/8               | 4                       | 3            |
| 1 x 5          | 17RT1010050 | -           | 5.00    | 3.88    | 0.56    | 0.88    | 5/8               | 4                       | 3            |
| 1 x 7          | 17RT1010070 | -           | 7.00    | 5.50    | 0.69    | 1.12    | 3/4               | 4                       | 7            |
| 1-1/4 x 6      | 17RT1012060 | -           | 6.00    | 6.00    | 0.75    | 1.00    | 3/4               | 4                       | 4            |
| 1-1/2 x 6      | 17RT1014060 | 18RT1014060 | 6.00    | 6.00    | 0.75    | 1.00    | 3/4               | 4                       | 4            |
| 1-1/2 x 7      | 17RT1014070 | 18RT1014070 | 7.00    | 5.50    | 0.69    | 1.12    | 3/4               | 4                       | 6            |
| 1-1/2 x 7-1/2  | 17RT1014074 | -           | 7.50    | 6.00    | 0.75    | 1.19    | 3/4               | 4                       | 9            |
| 1-1/2 x 9      | 17RT1014090 | -           | 9.00    | 7.50    | 0.94    | 1.31    | 3/4               | 8                       | 15           |
| 1-1/2 x 10     | 17RT1014100 | -           | 10.00   | 8.50    | 0.94    | 1.44    | 7/8               | 8                       | 19           |
| 1-1/2 x 11     | 17RT1014110 | -           | 11.00   | 9.50    | 1.00    | 1.56    | 7/8               | 8                       | 24           |
| 2 x 7          | 17RT1020070 | 18RT1020070 | 7.00    | 5.50    | 0.69    | 1.12    | 3/4               | 4                       | 7            |
| 2 x 7-1/2      | 17RT1020074 | 18RT1020074 | 7.50    | 6.00    | 0.75    | 1.19    | 3/4               | 4                       | 8            |
| 2 x 9          | 17RT1020090 | 18RT1020090 | 9.00    | 7.50    | 0.94    | 1.31    | 3/4               | 8                       | 16           |
| 2 x 10         | 17RT1020100 | -           | 10.00   | 8.50    | 0.94    | 1.44    | 7/8               | 8                       | 17           |
| 2 x 11         | 17RT1020110 | 18RT1020110 | 11.00   | 9.50    | 1.00    | 1.56    | 7/8               | 8                       | 23           |
| 2 x 13-1/2     | 17RT1020134 | -           | 13.50   | 11.75   | 1.12    | 1.75    | 7/8               | 8                       | 44           |
| 2 x 16         | 17RT1020160 | -           | 16.00   | 14.25   | 1.19    | 1.94    | 1                 | 12                      | 60           |
| 2 x 19         | 17RT1020190 | -           | 19.00   | 17.00   | 1.25    | 2.19    | 1                 | 12                      | 87           |
| 2-1/2 x 7-1/2  | 17RT1024074 | 18RT1024074 | 7.50    | 6.00    | 0.75    | 1.19    | 3/4               | 4                       | 8            |
| 2-1/2 x 9      | 17RT1024090 | 18RT1024090 | 9.00    | 7.50    | 0.94    | 1.31    | 3/4               | 8                       | 13           |
| 2-1/2 x 10     | 17RT1024100 | -           | 10.00   | 8.50    | 0.94    | 1.44    | 7/8               | 8                       | 18           |
| 2-1/2 x 11     | 17RT1024110 | 18RT1024110 | 11.00   | 9.50    | 1.00    | 1.56    | 7/8               | 8                       | 22           |
| 2-1/2 x 13-1/2 | 17RT1024134 | -           | 13.50   | 11.75   | 1.12    | 1.75    | 7/8               | 8                       | 40           |
| 3 x 9          | 17RT1030090 | 18RT1030090 | 9.00    | 7.50    | 0.94    | 1.31    | 3/4               | 8                       | 13           |
| 3 x 10         | 17RT1030100 | -           | 10.00   | 8.50    | 0.94    | 1.44    | 7/8               | 8                       | 17           |
| 3 x 11         | 17RT1030110 | -           | 11.00   | 9.50    | 1.00    | 1.56    | 7/8               | 8                       | 21           |
| 3 x 13-1/2     | 17RT1030134 | -           | 13.50   | 11.75   | 1.12    | 1.75    | 7/8               | 8                       | 37           |
| 3-1/2 x 13-1/2 | 17RT1034134 | -           | 13.50   | 11.75   | 1.12    | 1.75    | 7/8               | 8                       | 39           |
| 4 x 10         | 17RT1040100 | 18RT1040100 | 10.00   | 8.50    | 0.94    | 1.44    | 7/8               | 8                       | 14           |
| 4 x 11         | 17RT1040110 | 18RT1040110 | 11.00   | 9.50    | 1.00    | 1.56    | 7/8               | 8                       | 21           |
| 4 x 13-1/2     | 17RT1040134 | 18RT1040134 | 13.50   | 11.75   | 1.12    | 1.75    | 7/8               | 8                       | 35           |
| 5 x 11         | 17RT1050110 | 18RT1050110 | 11.00   | 9.50    | 1.00    | 1.56    | 7/8               | 8                       | 20           |
| 5 x 13-1/2     | 17RT1050134 | -           | 13.50   | 11.75   | 1.12    | 1.75    | 7/8               | 8                       | 32           |
| 6 x 13-1/2     | 17RT1060134 | 18RT1060134 | 13.50   | 11.75   | 1.12    | 1.75    | 7/8               | 8                       | 30           |
| 6 x 16         | 17RT1060160 | -           | 16.00   | 14.25   | 1.19    | 1.94    | 1                 | 12                      | 55           |
| 8 x 16         | 17RT1080160 | -           | 16.00   | 14.25   | 1.19    | 1.94    | 1                 | 12                      | 45           |

**FLANGED**



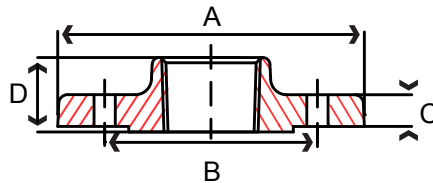
**Fig. 17HF1 – 150 lb. Threaded Hydrant Flange**

| Size in | Part Number Black | A in  | B in | C in | D in | Bolt Hole Size | Number of Bolt Holes | Weight lb |
|---------|-------------------|-------|------|------|------|----------------|----------------------|-----------|
| 6       | 17HF1060          | 11.00 | 9.50 | 1.00 | 1.56 | 7/8            | 6                    | 16        |



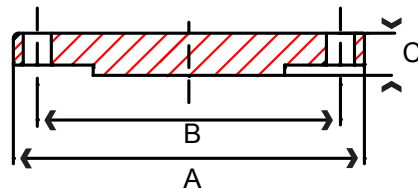
**Fig. 17HB1 – 150 lb. Blind Hydrant Flange**

| Size in | Part Number Black | A in  | B in | C in | Bolt Hole Size | Number of Bolt Holes | Weight lb |
|---------|-------------------|-------|------|------|----------------|----------------------|-----------|
| 6       | 17HB1060          | 11.00 | 9.50 | 1.00 | 7/8            | 6                    | 26        |



**Fig. 17TH2 & 18TH2 – 300 lb. Threaded Companion Flange**

| Size in | Part Number |            | A in  | B in  | C in | D in | Bolt Hole Size | Number of Bolt Holes | Weight lb |
|---------|-------------|------------|-------|-------|------|------|----------------|----------------------|-----------|
|         | Black       | Galvanized |       |       |      |      |                |                      |           |
| 2       | 17TH2020    | 18TH2020   | 6.50  | 5.00  | 0.88 | 1.25 | 3/4            | 8                    | 7         |
| 2-1/2   | 17TH2024    | 18TH2024   | 7.50  | 5.88  | 1.00 | 1.43 | 7/8            | 8                    | 10        |
| 3       | 17TH2030    | 18TH2030   | 8.25  | 6.62  | 1.12 | 1.56 | 7/8            | 8                    | 14        |
| 4       | 17TH2040    | 18TH2040   | 10.00 | 7.88  | 1.25 | 1.75 | 7/8            | 8                    | 24        |
| 6       | 17TH2060    | -          | 12.50 | 10.60 | 1.44 | 1.94 | 7/8            | 12                   | 39        |
| 8       | 17TH2080    | -          | 15.00 | 13.00 | 1.62 | 2.19 | 1              | 12                   | 58        |



**Fig. 17BL2 – 300 lb. Blind Flange**

| Size in | Part Number Black | A in  | B in  | C in | Bolt Hole Size | Number of Bolt Holes | Weight lb |
|---------|-------------------|-------|-------|------|----------------|----------------------|-----------|
| 2       | 17BL2020          | 6.50  | 5.00  | 0.88 | 3/4            | 8                    | 8         |
| 2-1/2   | 17BL2024          | 7.50  | 5.88  | 1.00 | 7/8            | 8                    | 12        |
| 3       | 17BL2030          | 8.25  | 6.62  | 1.12 | 7/8            | 8                    | 16        |
| 4       | 17BL2040          | 10.00 | 7.88  | 1.25 | 7/8            | 8                    | 27        |
| 5       | 17BL2050          | 11.00 | 9.25  | 1.38 | 7/8            | 8                    | 35        |
| 6       | 17BL2060          | 12.50 | 10.60 | 1.44 | 7/8            | 12                   | 50        |
| 8       | 17BL2080          | 15.00 | 13.00 | 1.62 | 1              | 12                   | 81        |
| 10      | 17BL2100          | 17.50 | 15.25 | 1.88 | 1-1/8          | 16                   | 115       |

All 250 lb. Flanges have 1/16 raised face