

QUICKBITE™

No special tools required. No gluing, crimping or soldering required.

QUICKBITE™ valves and fittings are the simplest connectors to use.

- 1 - Clean the tube
- 2 - Press on the QUICKBITE™ fitting or valve
- 3 - DONE! No leak seal

QUICKBITE™ Quick Facts:

- Fittings certified to 200 PSI and 180° F
- Works with PEX, CPVC and copper tubing
- PEX stiffener pre-installed - Easy to remove for PVC or Copper installations
- Lead-free brass
- Full flow
- Fittings & valves are removable and reusable
- Easy-to-follow instructions are available at www.smithcooper.com/QR1 or by scanning the QR code on the back of every bag

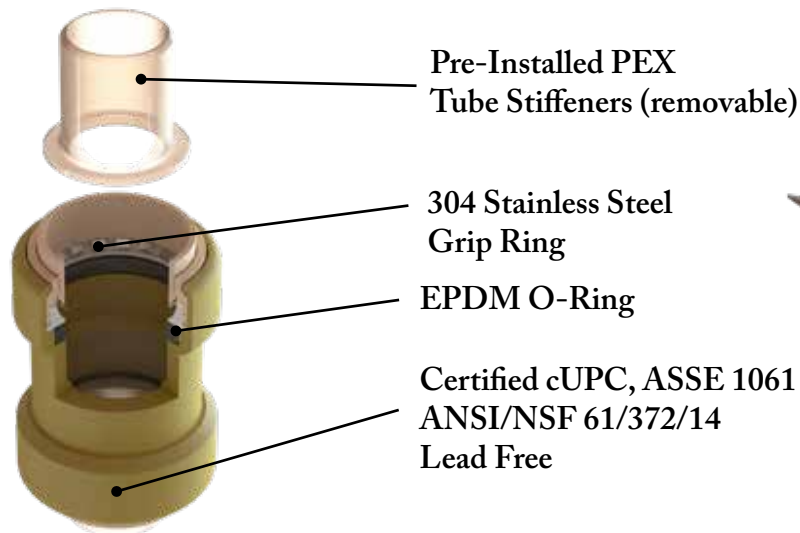


Fig. QBBV - Valve

Size in	Part Number	Packing		Weight lb
		Inner	Master	
1/2	QBBV004	10	20	0.408
3/4	QBBV006	10	20	0.598
1	QBBV010	5	10	1.152

LEAD FREE

Fig. QBE - Elbow

Size in	Part Number	Packing		Weight lb
		Inner	Master	
3/8	QBE003	10	40	0.131
1/2	QBE004	10	40	0.149
3/4	QBE006	10	20	0.272
1	QBE010	5	20	0.471
* 1-1/4	QBE012	-	Bulk	-
* 1-1/2	QBE014	-	Bulk	-
* 2	QBE020	-	Bulk	-



Fig. QBRE - Reducing Elbow

Size in	Part Number	Packing		Weight lb
		Inner	Master	
3/4 x 1/2	QBRE006004	10	40	0.210
1 x 3/4	QBRE010006	10	20	0.371



Fig. QBFE - Female Adapter Elbow (Push x FNPT)

Size in	Part Number	Packing		Weight lb
		Inner	Master	
1/2 x 1/2	QBFE004	10	40	0.178
3/4 x 3/4	QBFE006	10	20	0.290
1 x 1	QBFE010	5	20	0.425



Fig. QBME - Male Adapter Elbow (Push x MNPT)

Size in	Part Number	Packing		Weight lb
		Inner	Master	
1/2 x 1/2	QBME004	10	40	0.180
3/4 x 3/4	QBME006	10	20	0.290
1 x 1	QBME010	5	20	0.477



Fig. QBDE - Drop Ear Elbow (Push x FNPT)

Size in	Part Number	Packing		Weight lb
		Inner	Master	
1/2 x 1/2	QBDE004	10	40	0.218
3/4 x 3/4	QBDE006	10	20	0.359



* Available upon request

LEAD FREE


Fig. QBT - Tee

Size in	Part Number	Packing		Weight lb
		Inner	Master	
3/8	QBT003	10	40	0.163
1/2	QBT004	10	40	0.199
3/4	QBT006	10	20	0.355
1	QBT010	5	10	0.621
* 1-1/4	QBT012	-	Bulk	-
* 1-1/2	QBT014	-	Bulk	-
* 2	QBT020	-	Bulk	-


Fig. QBRT - Reducing Tee

Size in	Part Number	Packing		Weight lb
		Inner	Master	
* 1/2 x 1/2 x 3/4	QBRT004004006	-	Bulk	-
* 1/2 x 1/2 x 1	QBRT004004010	-	Bulk	-
3/4 x 1/2 x 1/2	QBRT006004004	10	20	0.257
3/4 x 1/2 x 3/4	QBRT006004006	10	20	0.332
3/4 x 3/4 x 1/2	QBRT006004	10	20	0.322
3/4 x 3/4 x 1	QBRT006006010	5	20	-
1 x 1 x 3/4	QBRT010006	5	10	0.520


Fig. QBCP - Coupling

Size in	Part Number	Packing		Weight lb
		Inner	Master	
3/8	QBCP003	10	40	0.104
1/2	QBCP004	10	40	0.122
3/4	QBCP006	10	40	0.192
1	QBCP010	5	20	0.310
* 1-1/4	QBCP012	-	Bulk	-
* 1-1/2	QBCP014	-	Bulk	-
* 2	QBCP020	-	Bulk	-


Fig. QBRC - Reducing Coupling

Size in	Part Number	Packing		Weight lb
		Inner	Master	
3/8 X 1/2	QBRC003004	10	40	0.136
3/4 x 1/2	QBRC006004	10	40	0.167
1 x 3/4	QBRC010006	10	20	0.259


Fig. QBSC - Slip Coupling

Size in	Part Number	Packing		Weight lb
		Inner	Master	
1/2	QBSC004	10	40	0.230
3/4	QBSC006	10	20	0.364
1	QBSC010	5	20	0.521

* Available upon request

Fig. QBMA - Male Adapter (Push x MNPT)

Size in	Part Number	Packing		Weight lb
		Inner	Master	
3/8 X 3/8	QBMA003	10	40	0.087
1/2 x 1/2	QBMA004	10	40	0.114
1/2 x 3/4	QBMA004006	10	40	0.163
* 3/4 x 1/2	QBMA006004	-	Bulk	-
3/4 x 3/4	QBMA006	10	40	0.182
3/4 x 1	QBMA006010	5	20	0.245
1 x 3/4	QBMA010006	5	20	0.245
1 x 1	QBMA010	5	20	0.256
* 1-1/4 x 1-1/4	QBMA012	-	Bulk	-
* 1-1/2 x 1-1/2	QBMA014	-	Bulk	-
* 2 x 2	QBMA020	-	Bulk	-



Fig. QBFA - Female Adapter (Push x FNPT)

Size in	Part Number	Packing		Weight lb
		Inner	Master	
1/2 x 1/2	QBFA004	10	40	0.115
1/2 x 3/4	QBFA004006	10	40	0.166
* 3/4 x 1/2	QBFA006004	-	Bulk	-
3/4 x 3/4	QBFA006	10	40	0.198
3/4 x 1	QBFA006010	5	20	0.238
* 1 x 3/4	QBFA010006	-	Bulk	-
1 x 1	QBFA010	5	20	0.276
* 1-1/4 x 1-1/4	QBFA012	-	Bulk	-
* 1-1/2 x 1-1/2	QBFA014	-	Bulk	-
* 2 x 2	QBFA020	-	Bulk	-



Fig. QBC - Cap

Size in	Part Number	Packing		Weight lb
		Inner	Master	
3/8	QBC003	10	40	0.041
1/2	QBC004	10	40	0.069
3/4	QBC006	10	40	0.122
1	QBC010	5	20	0.199
* 1-1/4	QBC012	-	Bulk	-
* 1-1/2	QBC014	-	Bulk	-
* 2	QBC020	-	Bulk	-



Fig. QBDT - Disconnect Tool

Size in	Part Number	Packing		Weight lb
		Inner	Master	
** 3/8	QBDT003	10	40	0.040
** 1/2	QBDT004	10	40	0.070
** 3/4	QBDT006	10	20	0.170
** 1	QBDT010	5	10	0.240



Fig. QBS - Stiffener

Size in	Part Number	Packing		Weight lb
		Inner	Master	
** 1/2	QBS004	10	40	0.050
** 3/4	QBS006	10	20	0.080
** 1	QBS010	5	20	0.050



LEAD FREE

LEAD FREE

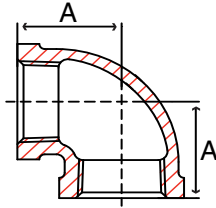


Fig. 36E 1L – 90° Elbow

Size in	Part Number	A in	Packing		Weight lb
			Inner	Master	
1/8	36E 1001L	0.54	50	800	0.1
1/4	36E 1002L	0.71	35	560	0.1
3/8	36E 1003L	0.82	45	360	0.1
1/2	36E 1004L	1.01	50	200	0.2
3/4	36E 1006L	1.18	35	140	0.3
1	36E 1010L	1.43	20	80	0.6
1-1/4	36E 1012L	1.69	20	40	0.9
1-1/2	36E 1014L	1.84	15	30	1.2
2	36E 1020L	2.12	8	16	2.0
2-1/2	36E 1024L	2.70	6	12	3.8
3	36E 1030L	3.08	-	7	4.7
4	36E 1040L	3.79	-	3	9.7

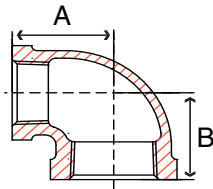


Fig. 36RE1L – 90° Reducing Elbow

Size in	Part Number	A in	B in	Packing		Weight lb
				Inner	Master	
1/2 x 1/4	36RE1004002L	0.98	0.97	50	400	0.2
1/2 x 3/8	36RE1004003L	0.93	0.90	50	200	0.2
3/4 x 1/2	36RE1006004L	1.11	1.08	50	200	0.4
1 x 1/2	36RE1010004L	1.24	1.20	25	100	0.5
1 x 3/4	36RE1010006L	1.31	1.30	30	120	0.5
1-1/4 x 3/4	36RE1012006L	1.48	1.39	15	60	0.7
1-1/4 x 1	36RE1012010L	1.60	1.52	10	40	0.7
1-1/2 x 1	36RE1014010L	1.72	1.55	10	40	1.0
1-1/2 x 1-1/4	36RE1014012L	1.81	1.72	8	32	1.0
2 x 1	36RE1020010L	2.02	1.73	14	28	1.4
2 x 1-1/4	36RE1020012L	2.10	1.90	10	20	1.5
2 x 1-1/2	36RE1020014L	2.07	1.89	10	20	1.6
2-1/2 x 2	36RE1024020L	2.60	2.39	8	16	3.1
3 x 2-1/2	36RE1030024L	2.99	2.83	-	8	4.0

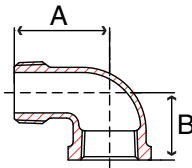


Fig. 36SE1L – 90° Street Elbow

Size in	Part Number	A in	B in	Packing		Weight lb
				Inner	Master	
1/8	36SE1001L	0.92	0.54	60	960	0.1
1/4	36SE1002L	1.11	0.71	35	560	0.1
3/8	36SE1003L	1.24	0.82	40	320	0.1
1/2	36SE1004L	1.48	1.01	75	300	0.2
3/4	36SE1006L	1.65	1.18	40	160	0.3
1	36SE1010L	1.98	1.43	40	80	0.5
1-1/4	36SE1012L	2.24	1.69	25	50	0.8
1-1/2	36SE1014L	2.46	1.84	9	36	1.1
2	36SE1020L	2.88	2.12	10	20	2.0
2-1/2	36SE1024L	3.86	2.70	-	10	4.0
3	36SE1030L	4.51	3.08	-	7	4.7
4	36SE1040L	5.69	3.79	-	3	11.4

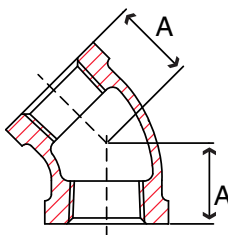


Fig. 36F 1L – 45° Elbow

Size in	Part Number	A in	Packing		Weight lb
			Inner	Master	
1/8	36F 1001L	0.42	50	800	0.1
1/4	36F 1002L	0.56	30	480	0.1
3/8	36F 1003L	0.63	50	400	0.1
1/2	36F 1004L	0.78	50	200	0.2
3/4	36F 1006L	0.89	40	160	0.3
1	36F 1010L	1.06	20	80	0.5
1-1/4	36F 1012L	1.22	20	40	0.7
1-1/2	36F 1014L	1.30	8	32	1.0
2	36F 1020L	1.45	12	24	1.7
2-1/2	36F 1024L	1.95	-	15	3.2
3	36F 1030L	2.17	-	10	4.7
4	36F 1040L	2.61	-	3	8.1

Fig. 36SF1L – 45° Street Elbow

Size in	Part Number	A in	B in	Packing		Weight lb
				Inner	Master	
1/8	36SF1001L	0.42	0.78	70	1120	0.05
1/4	36SF1002L	0.56	0.88	40	640	0.1
3/8	36SF1003L	0.63	0.92	50	600	0.1
1/2	36SF1004L	0.78	1.06	75	300	0.2
3/4	36SF1006L	0.89	1.23	40	160	0.3
1	36SF1010L	1.06	1.40	25	100	0.5
1-1/4	36SF1012L	1.22	1.64	10	40	0.7
1-1/2	36SF1014L	1.30	1.80	10	40	1.0
2	36SF1020L	1.45	2.14	12	24	1.5
2-1/2	36SF1024L	1.95	2.57	5	10	3.0

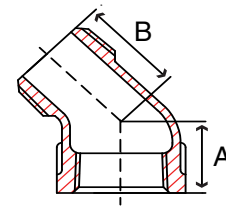


Fig. 36T 1L – Tee

Size in	Part Number	A in	Packing		Weight lb
			Inner	Master	
1/8	36T 1001L	0.54	80	640	0.1
1/4	36T 1002L	0.71	50	400	0.1
3/8	36T 1003L	0.82	30	240	0.2
1/2	36T 1004L	1.01	40	160	0.3
3/4	36T 1006L	1.18	25	100	0.5
1	36T 1010L	1.43	25	50	0.8
1-1/4	36T 1012L	1.69	14	28	1.2
1-1/2	36T 1014L	1.84	15	30	1.6
2	36T 1020L	2.12	-	15	2.7
2-1/2	36T 1024L	2.70	-	10	5.1
3	36T 1030L	3.08	-	6	7.5
4	36T 1040L	3.79	-	2	13.3

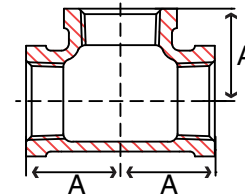


Fig. 36BT1L – Bull Head Tee

Size in	Part Number	A in	B in	C in	Packing		Weight lb
					Inner	Master	
1/2 x 3/4	36BT1004006L	1.11	1.11	1.08	25	100	0.4
3/4 x 1	36BT1006010L	1.31	1.31	1.30	15	60	0.7

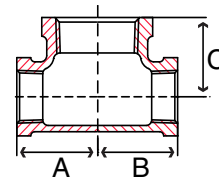
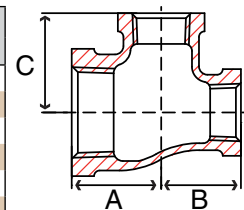


Fig. 36RT1L – Reducing Tee

Size in	Part Number	A in	B in	C in	Packing		Weight lb
					Inner	Master	
1/2 x 1/4	36RT1004002L	0.87	0.87	0.87	25	200	0.2
1/2 x 3/8	36RT1004003L	0.93	0.93	0.90	25	200	0.3
3/4 x 1/4	36RT1006002L	1.00	1.00	1.00	25	100	0.4
3/4 x 3/8	36RT1006003L	1.00	1.00	1.00	25	100	0.4
3/4 x 1/2	36RT1006004L	1.08	1.08	1.11	25	100	0.5
1 x 1/2	36RT1010004L	1.20	1.20	1.24	15	60	0.6
1 x 3/4	36RT1010006L	1.30	1.18	1.31	15	60	0.8
1 x 3/4 x 1	36RT1010006010L	1.43	1.31	1.43	15	60	0.8
1-1/4 x 1/2	36RT1012004L	1.29	1.29	1.41	20	40	0.8
1-1/4 x 3/4	36RT1012006L	1.39	1.39	1.48	20	40	0.9
1-1/4 x 1	36RT1012010L	1.52	1.52	1.60	20	40	1.2
1-1/2 x 3/4	36RT1014006L	1.42	1.42	1.60	15	30	1.3
1-1/2 x 1	36RT1014010L	1.55	1.55	1.72	15	30	1.2
1-1/2 x 1-1/4	36RT1014012L	1.72	1.72	1.81	12	24	1.7
2 x 1/2	36RT1020004L	1.47	1.47	1.84	12	24	1.8
2 x 3/4	36RT1020006L	1.47	1.47	1.84	12	24	1.9
2 x 1	36RT1020010L	1.59	1.59	1.95	10	20	2.0
2 x 1-1/4	36RT1020012L	1.77	1.77	2.04	8	16	2.2
2 x 1-1/2	36RT1020014L	1.89	1.89	2.07	8	16	2.6
2-1/2 x 1-1/4	36RT1024012L	2.04	2.04	2.45	-	10	3.2
2-1/2 x 1-1/2	36RT1024014L	2.16	2.16	2.51	-	10	3.8
2-1/2 x 2	36RT1024020L	2.39	2.39	2.60	-	10	4.2
3 x 1-1/2	36RT1030014L	2.29	2.29	2.80	-	6	4.9
3 x 2	36RT1030020L	2.52	2.52	2.89	-	6	3.7



LEAD FREE

LEAD FREE

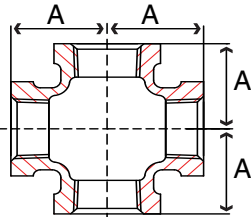
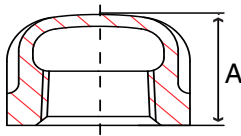


Fig. 36X 1L – Cross

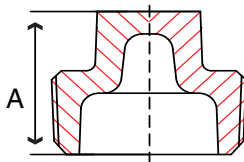
Size in	Part Number	A in	Packing		Weight lb
			Inner	Master	
1/8	36X 1001L	0.54	20	320	0.1
1/4	36X 1002L	0.71	40	320	0.2
3/8	36X 1003L	0.82	40	160	0.1
1/2	36X 1004L	1.01	30	120	0.4
3/4	36X 1006L	1.18	20	80	0.7
1	36X 1010L	1.43	20	40	1.0
1-1/4	36X 1012L	1.69	-	20	1.6
1-1/2	36X 1014L	1.84	-	18	2.1
2	36X 1020L	2.12	-	10	3.2
2-1/2	36X 1024L	2.70	-	6	5.5
3	36X 1030L	3.08	-	4	8.2

Fig. 36C 1L – Cap



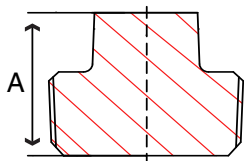
Size in	Part Number	A in	Packing		Weight lb
			Inner	Master	
1/8	36C 1001L	0.53	120	1920	0.03
1/4	36C 1002L	0.63	80	1280	0.06
3/8	36C 1003L	0.68	60	720	0.1
1/2	36C 1004L	0.80	75	600	0.1
3/4	36C 1006L	0.90	40	320	0.1
1	36C 1010L	1.08	25	200	0.3
1-1/4	36C 1012L	1.12	25	100	0.5
1-1/2	36C 1014L	1.17	25	100	0.6
2	36C 1020L	1.36	18	72	0.9
2-1/2	36C 1024L	1.70	20	40	1.9
3	36C 1030L	1.80	12	24	2.7
4	36C 1040L	2.08	6	12	4.4

Fig. 36SC1L – Square Head Cored Plug



Size in	Part Number	A in	Packing		Weight lb
			Inner	Master	
1/2	36SC1004L	1.00	50	800	0.1
3/4	36SC1006L	1.15	30	360	0.1
1	36SC1010L	1.30	20	240	0.2
1-1/4	36SC1012L	1.40	40	160	0.3
1-1/2	36SC1014L	1.50	30	120	0.5
2	36SC1020L	1.60	20	80	0.7
2-1/2	36SC1024L	1.85	16	64	1.0
3	36SC1030L	1.95	16	32	2.0
4	36SC1040L	2.30	8	16	3.6

Fig. 36SS1L – Square Head Solid Plug



Size in	Part Number	A in	Packing		Weight lb
			Inner	Master	
1/8	36SS1001L	0.65	300	4800	0.02
1/4	36SS1002L	0.75	150	2400	0.03
3/8	36SS1003L	0.85	100	1600	0.06
1/2	36SS1004L	1.00	50	800	0.1
3/4	36SS1006L	1.15	30	360	0.1
1	36SS1010L	1.30	20	240	0.3
1-1/4	36SS1012L	1.40	40	160	0.6
1-1/2	36SS1014L	1.50	30	120	0.8
2	36SS1020L	1.60	20	80	1.2

Fig. 36U 1L – Union

Size in	Part Number	A in	Packing		Weight lb
			Inner	Master	
1/8	36U 1001L	1.34	30	480	0.1
1/4	36U 1002L	1.45	20	240	0.2
3/8	36U 1003L	1.60	20	160	0.3
1/2	36U 1004L	1.60	40	160	0.5
3/4	36U 1006L	1.80	40	80	0.7
1	36U 1010L	2.00	30	60	1.1
1-1/4	36U 1012L	2.07	20	40	1.6
1-1/2	36U 1014L	2.33	15	30	2.0
2	36U 1020L	2.53	10	20	3.2
2-1/2	36U 1024L	3.33	-	10	5.3
3	36U 1030L	3.60	-	7	6.9
4	36U 1040L	3.80	-	4	12.0

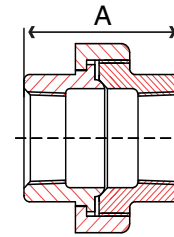
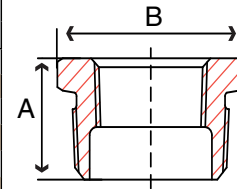
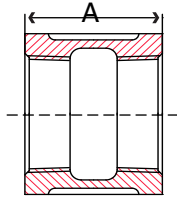


Fig. 36HB1L – Hex Bushing

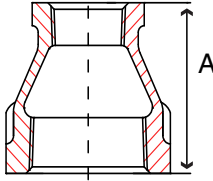
Size in	Part Number	A in	B in	Hex	Packing		Weight lb
					Inner	Master	
1/4 x 1/8	36HB1002001L	0.61	0.66	Out	120	1920	0.05
3/8 x 1/8	36HB1003001L	0.81	0.73	Out	75	1200	0.05
3/8 x 1/4	36HB1003002L	0.81	0.73	Out	75	1200	0.05
1/2 x 1/8	36HB1004001L	0.95	0.88	Out	100	800	0.1
1/2 x 1/4	36HB1004002L	0.81	0.90	Out	100	800	0.09
1/2 x 3/8	36HB1004003L	0.81	0.90	Out	100	800	0.07
3/4 x 1/8	36HB1006001L	0.88	1.18	Out	50	600	0.1
3/4 x 1/4	36HB1006002L	0.93	1.18	Out	40	480	0.1
3/4 x 3/8	36HB1006003L	0.93	1.18	Out	50	600	0.1
3/4 x 1/2	36HB1006004L	0.93	1.18	Out	40	480	0.1
1 x 1/4	36HB1010002L	1.13	1.12	In	50	400	0.2
1 x 3/8	36HB1010003L	1.13	1.12	In	50	400	0.2
1 x 1/2	36HB1010004L	1.10	1.44	Out	40	320	0.2
1 x 3/4	36HB1010006L	1.10	1.44	Out	40	360	0.2
1-1/4 x 1/2	36HB1012004L	1.18	1.80	Out	30	120	0.3
1-1/4 x 3/4	36HB1012006L	1.18	1.80	Out	30	120	0.4
1-1/4 x 1	36HB1012010L	1.18	1.80	Out	30	120	0.3
1-1/2 x 1/2	36HB1014004L	1.27	1.34	In	25	100	0.4
1-1/2 x 3/4	36HB1014006L	1.27	1.63	In	25	100	0.4
1-1/2 x 1	36HB1014010L	1.19	2.04	Out	25	100	0.5
1-1/2 x 1-1/4	36HB1014012L	1.19	2.04	Out	25	100	0.4
2 x 1/2	36HB1020004L	1.35	1.36	In	20	80	0.6
2 x 3/4	36HB1020006L	1.35	1.65	In	20	80	0.7
2 x 1	36HB1020010L	1.35	2.00	In	20	80	0.7
2 x 1-1/4	36HB1020012L	1.35	2.50	Out	20	80	0.8
2 x 1-1/2	36HB1020014L	1.35	2.55	Out	20	80	0.8
2-1/2 x 1-1/4	36HB1024012L	1.60	3.15	Out	12	48	1.2
2-1/2 x 1-1/2	36HB1024014L	1.52	2.70	In	12	48	1.3
2-1/2 x 2	36HB1024020L	1.62	3.15	Out	12	48	1.1
3 x 1	36HB1030010L	1.60	2.00	In	12	48	1.6
3 x 1-1/2	36HB1030014L	1.70	2.70	In	12	48	1.8
3 x 2	36HB1030020L	1.70	3.25	In	6	24	2.3
3 x 2-1/2	36HB1030024L	1.70	3.90	Out	6	24	2.1
4 x 2	36HB1040020L	1.80	3.30	In	-	20	3.6
4 x 2-1/2	36HB1040024L	2.10	4.75	Out	-	20	3.9
4 x 3	36HB1040030L	2.10	4.75	Out	-	20	4.2




Fig. 36CP1L – Coupling

Size in	Part Number	A in	Packing		Weight lb
			Inner	Master	
1/8	36CP1001L	0.80	70	1120	0.1
1/4	36CP1002L	0.97	40	640	0.1
3/8	36CP1003L	1.05	50	600	0.1
1/2	36CP1004L	1.29	40	320	0.1
3/4	36CP1006L	1.43	50	200	0.2
1	36CP1010L	1.68	25	100	0.4
1-1/4	36CP1012L	1.86	20	80	0.6
1-1/2	36CP1014L	1.92	12	48	0.8
2	36CP1020L	2.20	12	24	1.3
2-1/2	36CP1024L	2.88	8	16	2.6
3	36CP1030L	3.18	8	16	3.7
4	36CP1040L	3.69	-	6	5.8

LEAD FREE


Fig. 36RC1L – Reducing Coupling

Size in	Part Number	A in	Packing		Weight lb
			Inner	Master	
1/4 x 1/8	36RC1002001L	0.88	50	600	0.08
3/8 x 1/8	36RC1003001L	0.92	35	420	0.1
3/8 x 1/4	36RC1003002L	1.01	40	480	0.1
1/2 x 1/8	36RC1004001L	1.13	50	400	0.1
1/2 x 1/4	36RC1004002L	1.13	50	400	0.1
1/2 x 3/8	36RC1004003L	1.17	40	320	0.1
3/4 x 1/8	36RC1006001L	1.24	35	280	0.1
3/4 x 1/4	36RC1006002L	1.24	30	240	0.2
3/4 x 3/8	36RC1006003L	1.24	50	200	0.2
3/4 x 1/2	36RC1006004L	1.36	60	240	0.2
1 x 1/4	36RC1010002L	1.49	45	180	0.3
1 x 3/8	36RC1010003L	1.49	30	120	0.4
1 x 1/2	36RC1010004L	1.49	30	120	0.3
1 x 3/4	36RC1010006L	1.56	25	100	0.4
1-1/4 x 1/2	36RC1012004L	1.65	25	100	0.6
1-1/4 x 3/4	36RC1012006L	1.65	25	100	0.6
1-1/4 x 1	36RC1012010L	1.77	15	60	0.5
1-1/2 x 1/2	36RC1014004L	1.8	15	60	0.7
1-1/2 x 3/4	36RC1014006L	1.8	15	60	0.8
1-1/2 x 1	36RC1014010L	1.8	15	60	0.6
1-1/2 x 1-1/4	36RC1014012L	1.89	12	48	0.9
2 x 1/2	36RC1020004L	2.03	12	48	1.2
2 x 3/4	36RC1020006L	2.03	12	48	1.2
2 x 1	36RC1020010L	2.03	12	48	0.9
2 x 1-1/4	36RC1020012L	2.03	14	28	1.3
2 x 1-1/2	36RC1020014L	2.06	12	24	1.0
2-1/2 x 1-1/2	36RC1024014L	3.25	-	25	2.2
2-1/2 x 2	36RC1024020L	3.25	-	25	2.4
3 x 1	36RC1030010L	3.69	-	20	2.5
3 x 1-1/4	36RC1030012L	3.69	-	20	2.1
3 x 1-1/2	36RC1030014L	3.69	-	20	2.3
3 x 2	36RC1030020L	3.69	-	20	3.6
3 x 2-1/2	36RC1030024L	3.69	-	12	3.9
4 x 2	36RC1040020L	4.38	-	10	6.0
4 x 2-1/2	36RC1040024L	4.38	-	10	5.9
4 x 3	36RC1040030L	4.38	-	6	6.5