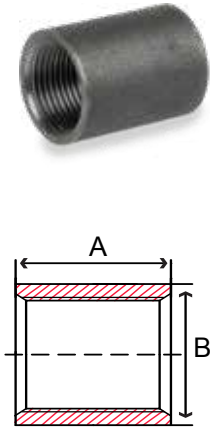
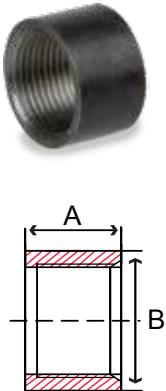


Fig. 23MC & 24MC – Merchant Coupling


Size in	Part Number		A in	B in	Packing		Weight lb
	Black	Galvanized			Inner	Master	
1/8	23MC4001	24MC4001	0.81	0.56	100	1,200	0.03
1/4	23MC4002	24MC4002	1.18	0.71	100	800	0.07
3/8	23MC4003	24MC4003	1.18	0.87	100	400	0.1
1/2	23MC4004	24MC4004	1.56	1.06	50	200	0.1
3/4	23MC4006	24MC4006	1.62	1.31	50	200	0.2
1	23MC4010	24MC4010	2.00	1.57	30	120	0.3
1-1/4	23MC4012	24MC4012	2.06	1.90	20	80	0.4
1-1/2	23MC4014	24MC4014	2.06	2.20	20	80	0.6
2	23MC4020	24MC4020	2.12	2.75	10	40	1.0
2-1/2*	23MC4024	24MC4024	3.12	3.25	-	30	2.2
3*	23MC4030	24MC4030	3.25	4.00	-	15	3.0
3-1/2*	23MC4034	24MC4034	3.37	4.62	-	10	4.1
4*	23MC4040	24MC4040	3.50	5.00	-	10	4.4
5*	23MC4050	24MC4050	3.75	6.29	-	4	7.2
6*	23MC4060	24MC4060	4.00	7.39	-	3	10.5

*Taper Tapped

Fig. 23HC & 24HC – Merchant Half Coupling


Size in	Part Number		A in	B in	Packing		Weight lb
	Black	Galvanized			Inner	Master	
1/8	23HC4001	24HC4001	0.38	0.56	100	1200	0.01
1/4	23HC4002	24HC4002	0.57	0.71	100	1200	0.03
3/8	23HC4003	24HC4003	0.57	0.87	100	1200	0.05
1/2	23HC4004	24HC4004	0.75	1.06	50	600	0.08
3/4	23HC4006	24HC4006	0.79	1.31	50	400	0.1
1	23HC4010	24HC4010	1.00	1.57	30	240	0.1
1-1/4	23HC4012	24HC4012	1.03	1.90	20	160	0.2
1-1/2	23HC4014	24HC4014	1.03	2.20	20	160	0.3
2	23HC4020	24HC4020	1.06	2.75	20	80	0.5
2-1/2*	23HC4024	24HC4024	1.06	3.25	-	60	1.1
3*	23HC4030	24HC4030	1.56	4.00	-	24	1.5
3-1/2*	23HC4034	24HC4034	1.60	4.62	-	20	2.1
4*	23HC4040	24HC4040	1.80	5.00	-	20	2.2
5*	23HC4050	24HC4050	1.90	6.29	-	12	3.6
6*	23HC4060	24HC4060	2.00	7.39	-	8	5.2

*Taper Tapped

Fig. 26CRXA – API 5L Recessed Coupling


Size in	Part Number		A in	B in	Packing		Weight lb
	Black	Galvanized			Inner	Master	
1/8	26CRXA001	24CRXA001	1.06	0.56	25	400	0.04
1/4	26CRXA002	24CRXA002	1.62	0.71	25	400	0.1
3/8	26CRXA003	24CRXA003	1.62	0.87	25	400	0.1
1/2	26CRXA004	24CRXA004	2.12	1.06	25	300	0.2
3/4	26CRXA006	24CRXA006	2.12	1.31	25	200	0.3
1	26CRXA010	24CRXA010	2.62	1.57	25	100	0.5
1-1/4	26CRXA012	24CRXA012	2.75	2.05	25	50	0.9
1-1/2	26CRXA014	24CRXA014	2.75	2.20	25	50	0.9
2	26CRXA020	24CRXA020	2.87	2.87	-	40	1.7
2-1/2	26CRXA024	24CRXA024	4.12	3.37	-	20	3.1
3	26CRXA030	24CRXA030	4.25	4.00	-	12	3.8
4	26CRXA040	24CRXA040	4.50	5.20	-	8	5.8
6	26CRXA060	24CRXA060	4.87	7.39	-	3	13.5
8	26CRXA080	24CRXA080	5.25	9.62	-	-	22.0

Fig. 23SP & 24SP – Square Head Plug

Size in	Part Number		A in	B in	Packing		Weight lb
	Black	Galvanized			Inner	Master	
1/8	23SP4001	24SP4001	0.57	0.27	-	2500	0.02
1/4	23SP4002	24SP4002	0.72	0.37	-	1000	0.04
3/8	23SP4003	24SP4003	0.80	0.42	-	600	0.06
1/2	23SP4004	24SP4004	0.97	0.55	-	300	0.1
3/4	23SP4006	24SP4006	1.07	0.62	-	200	0.2
1	23SP4010	24SP4010	1.25	0.81	-	100	0.3

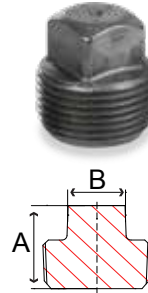


Fig. 23HP & 24HP – Hex Head Plug

Size in	Part Number		A in	B in	Packing		Weight lb
	Black	Galvanized			Inner	Master	
1/8	23HP4001	24HP4001	0.55	0.43	-	2000	0.02
1/4	23HP4002	24HP4002	0.74	0.56	-	900	0.05
3/8	23HP4003	24HP4003	0.80	0.68	-	600	0.07
1/2	23HP4004	24HP4004	0.97	0.87	-	300	0.1
3/4	23HP4006	24HP4006	1.06	1.06	-	150	0.3
1	23HP4010	24HP4010	1.10	1.31	-	100	0.5

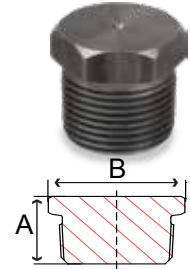


Fig. 23CS & 24CS – Countersunk Square Plug

Size in	Part Number		A in	B in	Packing		Weight lb
	Black	Galvanized			Inner	Master	
1/8	23CS4001	24CS4001	0.29	0.19	-	5000	0.01
1/4	23CS4002	24CS4002	0.44	0.25	-	1800	0.02
3/8	23CS4003	24CS4003	0.44	0.31	-	1100	0.03
1/2	23CS4004	24CS4004	0.59	0.38	-	500	0.07
3/4	23CS4006	24CS4006	0.60	0.50	-	300	0.1
1	23CS4010	24CS4010	0.75	0.50	-	150	0.2

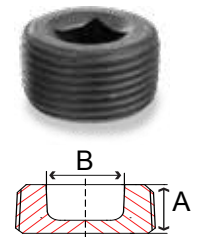


Fig. 23CH & 24CH – Countersunk Hex Plug

Size in	Part Number		A in	B in	Packing		Weight lb
	Black	Galvanized			Inner	Master	
1/8	23CH4001	24CH4001	0.29	0.18	-	5000	0.01
1/4	23CH4002	24CH4002	0.44	0.25	-	1800	0.02
3/8	23CH4003	24CH4003	0.44	0.31	-	1100	0.03
1/2	23CH4004	24CH4004	0.59	0.37	-	500	0.07
3/4	23CH4006	24CH4006	0.60	0.56	-	300	0.1
1	23CH4010	24CH4010	0.75	0.62	-	150	0.2

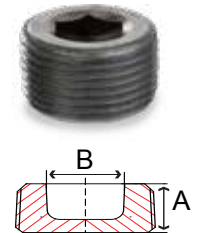


Fig. 23HB & 24HB – Hex Bushing

Size in	Part Number		A in	B in	Packing		Weight lb
	Black	Galvanized			Inner	Master	
1/4 x 1/8	23HB4002001	24HB4002001	0.63	0.62	100	500	0.03
3/8 x 1/8	23HB4003001	24HB4003001	0.66	0.68	100	500	0.05
3/8 x 1/4	23HB4003002	24HB4003002	0.66	0.68	100	500	0.05
1/2 x 1/8	23HB4004001	24HB4004001	0.80	0.87	50	500	0.1
1/2 x 1/4	23HB4004002	24HB4004002	0.80	0.87	50	500	0.1
1/2 x 3/8	23HB4004003	24HB4004003	0.80	0.87	50	500	0.1
3/4 x 1/8	23HB4006001	24HB4006001	0.94	1.06	50	500	0.2
3/4 x 1/4	23HB4006002	24HB4006002	0.94	1.06	50	500	0.2
3/4 x 3/8	23HB4006003	24HB4006003	0.94	1.06	50	500	0.2
3/4 x 1/2	23HB4006004	24HB4006004	0.94	1.06	50	500	0.2
1 x 1/8	23HB4010001	24HB4010001	1.00	1.31	50	500	0.3
1 x 1/4	23HB4010002	24HB4010002	1.00	1.31	50	500	0.4
1 x 3/8	23HB4010003	24HB4010003	1.00	1.31	50	500	0.4
1 x 1/2	23HB4010004	24HB4010004	1.00	1.31	50	500	0.4
1 x 3/4	23HB4010006	24HB4010006	1.00	1.31	50	500	0.4

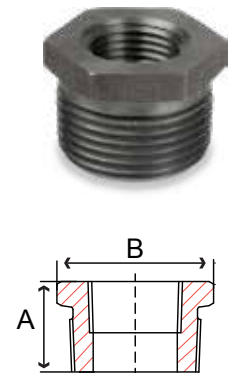
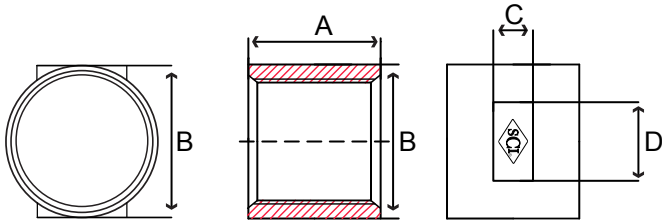


Fig. 29DC14 – 304 SS Recessed Drop Pipe Coupling



Size in	Part Number	A in	B in	C in	D in	Packing		Weight lb
						Inner	Master	
1	29DC14010	2.50	1.67	0.51	0.88	15	90	0.7
1-1/4	29DC14012	2.50	2.03	0.51	1.06	20	80	0.8
1-1/2	29DC14014	2.50	2.31	0.63	1.16	7	42	1.0
2	29DC14020	2.50	2.75	0.63	1.30	5	30	1.2



SCI ProPak™ System

**Order On-Line
at www.smithcooper.com**

MERCHANT



Pipe & Sanitary Tubing

Pipe, 304/304L & 316/316L
SCH 10, 40 & 80
WELDED & SEAMLESS 1/8" - 6"
SANITARY TUBING 1" - 6"



SCI Branded Valves

304/316/316L CAST
200#, 800#, 1000#
BALL, GATE, GLOBE & CHECK • 1/4" - 4"



Compression Fittings

316 STAINLESS DOUBLE FERRULE

Instrumentation Tubing

304/304L & 316/316L
WELDED & SEAMLESS • 3/16" - 1"



150# Fittings

304 & 316
THREADED & SOCKET WELD
1/8" - 4"



Nipples

304L & 316L
SCH 40 WELDED & SCH 80 SEAMLESS
1/8" - 6" DIAMETER • CLOSE - ANY LENGTH



3000# Forged Fittings

304L & 316L
THREADED & SOCKET WELD
1/8" - 4"



Weld Fittings

304L & 316L SCH 10, 40 & 80
1/2" - 6"



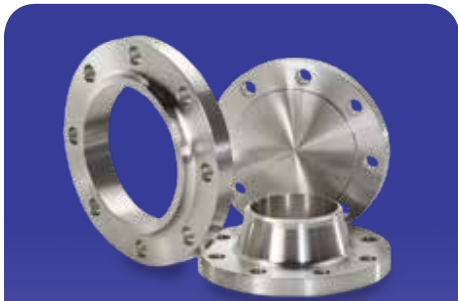
1000# Bar Stock

304 & 316
1/8" - 4"



Specialty Fittings

316 KING COMBO NIPPLES
WELD SPUDS
HEX NIPPLES



Flanges

304/304L & 316/316L
150# & 300# • 1/2" - 6"



Sanitary Fittings

304 & 316L
CLAMP END & WELD END
1/2" - 6"



Grooved Fittings & Pipe

304L & 316L
SCH 10 & SCH 40
1" - 6"