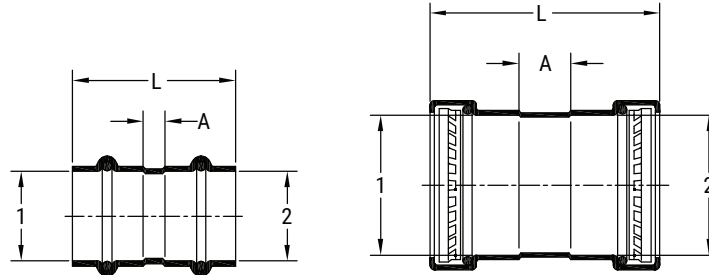


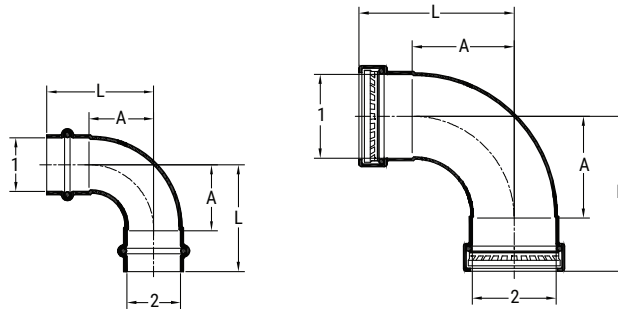
SCI Press-Copper: Dimensional Reference Comparison



D-604 Coupling with Stop

Style	Dim	Size	Measurements (inches)		
			ASC	Viega	Apollo
Coupling	L	½"	1.61	1.61	1.72
Coupling	L	¾"	2.05	2.01	1.89
Coupling	L	1"	2.05	1.97	2.06
Coupling	L	1¼"	2.44	2.20	2.34
Coupling	L	1½"	3.03	2.99	3.00
Coupling	L	2"	3.35	3.31	3.42
Coupling	L	2½"	4.33	4.33	4.33
Coupling	L	3"	4.92	4.92	4.65
Coupling	L	4"	5.79	5.79	5.53
Coupling	A	½"	0.12	0.12	0.11
Coupling	A	¾"	0.28	0.20	0.13
Coupling	A	1"	0.28	0.16	0.23
Coupling	A	1¼"	0.28	0.14	0.25
Coupling	A	1½"	0.24	0.14	0.24
Coupling	A	2"	0.24	0.14	0.25
Coupling	A	2½"	0.98	0.95	0.54
Coupling	A	3"	1.02	0.98	0.46
Coupling	A	4"	1.10	1.06	0.54

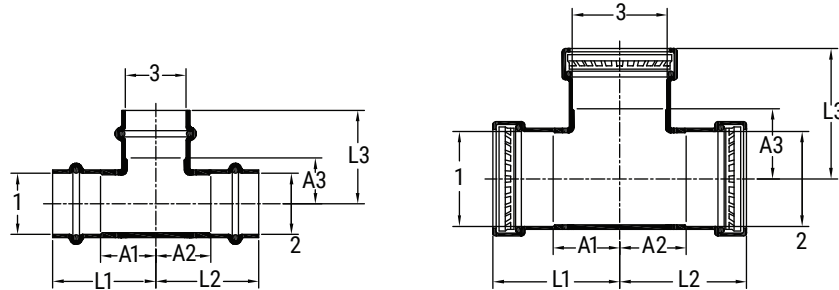
SCI Press-Copper: Dimensional Reference Comparison



D-604 Coupling with Stop

Style	Dim	Size	Measurements (inches)		
			ASC	Viega	Apollo
90° Elbow	L	½"	1.56	1.50	1.50
90° Elbow	L	¾"	2.03	1.67	1.96
90° Elbow	L	1"	2.24	2.19	2.23
90° Elbow	L	1¼"	2.64	2.31	2.96
90° Elbow	L	1½"	3.23	2.72	3.33
90° Elbow	L	2"	3.78	3.74	4.11
90° Elbow	L	2½"	4.88	4.88	5.09
90° Elbow	L	3"	5.72	5.73	6.72
90° Elbow	L	4"	7.24	7.26	7.40
90° Elbow	A	½"	0.81	0.75	0.75
90° Elbow	A	¾"	1.14	0.76	1.04
90° Elbow	A	1"	1.36	1.28	1.32
90° Elbow	A	1¼"	1.56	1.28	1.87
90° Elbow	A	1½"	1.83	1.29	2.02
90° Elbow	A	2"	2.22	2.16	2.52
90° Elbow	A	2½"	3.21	3.19	3.19
90° Elbow	A	3"	3.78	3.76	4.62
90° Elbow	A	4"	4.90	4.90	4.90

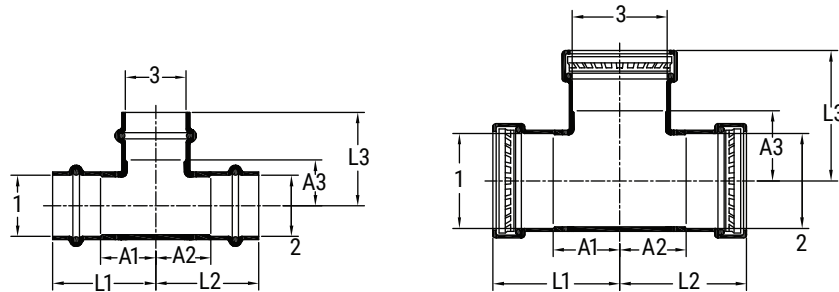
SCI Press-Copper: Dimensional Reference Comparison



D-SP620 Tee

Style	Dim	Size	Measurements (inches)		
			ASC	Viega	Apollo
Tees	L1 & L2	½"	1.56	1.50	1.50
Tees	L1 & L2	¾"	1.79	1.75	1.74
Tees	L1 & L2	1"	1.91	1.87	1.96
Tees	L1 & L2	1¼"	2.13	2.05	2.07
Tees	L1 & L2	1½"	2.62	2.56	2.38
Tees	L1 & L2	2"	2.99	2.95	2.88
Tees	L1 & L2	2½"	3.52	3.52	3.57
Tees	L1 & L2	3"	4.06	4.04	3.98
Tees	L1 & L2	4"	4.96	4.96	4.91
Tees	L3	½"	1.28	1.25	1.25
Tees	L3	¾"	1.59	1.50	1.56
Tees	L3	1"	1.73	1.69	1.78
Tees	L3	1¼"	1.97	1.89	2.07
Tees	L3	1½"	2.76	2.56	2.38
Tees	L3	2"	3.15	2.95	2.88
Tees	L3	2½"	3.62	3.63	3.75
Tees	L3	3"	4.06	4.18	4.34
Tees	L3	4"	4.96	5.09	5.31

SCI Press-Copper: Dimensional Reference Comparison



D-SP620 Tee

Style	Dim	Size	Measurements (inches)		
			ASC	Viega	Apollo
Tees	A1 & A2	½"	0.81	0.75	0.75
Tees	A1 & A2	¾"	0.91	0.85	0.92
Tees	A1 & A2	1"	1.02	0.97	0.98
Tees	A1 & A2	1¼"	1.04	1.02	1.09
Tees	A1 & A2	1½"	1.22	1.13	1.31
Tees	A1 & A2	2"	1.44	1.37	1.51
Tees	A1 & A2	2½"	1.85	1.83	1.67
Tees	A1 & A2	3"	2.11	2.07	1.88
Tees	A1 & A2	4"	2.62	2.6	2.41
Tees	A3	½"	0.53	0.75	0.5
Tees	A3	¾"	0.71	0.85	0.64
Tees	A3	1"	0.85	0.97	0.8
Tees	A3	1¼"	0.89	1.02	0.98
Tees	A3	1½"	1.36	1.13	1.07
Tees	A3	2"	1.59	1.37	1.37
Tees	A3	2½"	1.95	1.94	1.85
Tees	A3	3"	2.22	2.21	2.24
Tees	A3	4"	2.74	2.72	2.81