

Building connections that last™



SCI®

Merchant Steel Couplings & Fittings, API Recessed Couplings, & Drop Pipe Couplings






Merchant Steel Couplings and Fittings

API 5L Recessed Couplings

Stainless Drop Pipe Couplings

Merchant Steel Coupling and Fitting Specification


-  branded couplings
- Merchant coupling dimensions and materials conform to ASTM A865
- Canadian Registration Numbers available at www.smithcooper.com
- Merchant coupling threads conform to ASME B1.20.1
- Merchant couplings from 1/8" to 2" are NPSC (straight threads), 2-1/2" and larger are NPT (tapered threads)
- Merchant steel bushings and plugs conform to ASME B16.14
- Electro galvanized fittings conform to ASTM B633
- ProPak™ Packaging

API 5L Recessed Coupling Specifications

- Recessed couplings are API 5L approved for extra heavy pipe
- All sizes have NPT threads



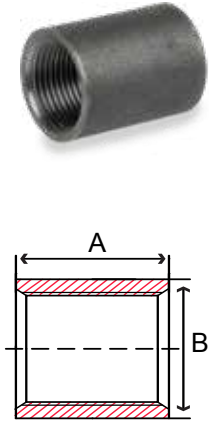
Stainless Drop Pipe Coupling Specifications

-  branded
- Stainless drop pipe couplings are NPT (tapered threads)
- Recessed



SCI ProPak™ System

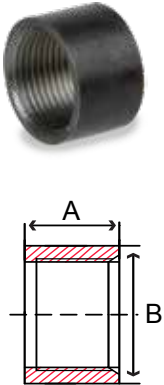
Fig. 23MC & 24MC – Merchant Coupling



Size in	Part Number		A in	B in	Packing		Weight lb
	Black	Galvanized			Inner	Master	
1/8	23MC4001	24MC4001	0.81	0.56	100	1,200	0.03
1/4	23MC4002	24MC4002	1.18	0.71	100	800	0.07
3/8	23MC4003	24MC4003	1.18	0.87	100	400	0.1
1/2	23MC4004	24MC4004	1.56	1.06	50	200	0.1
3/4	23MC4006	24MC4006	1.62	1.31	50	200	0.2
1	23MC4010	24MC4010	2.00	1.57	30	120	0.3
1-1/4	23MC4012	24MC4012	2.06	1.90	20	80	0.4
1-1/2	23MC4014	24MC4014	2.06	2.20	20	80	0.6
2	23MC4020	24MC4020	2.12	2.75	10	40	1.0
2-1/2*	23MC4024	24MC4024	3.12	3.25	-	30	2.2
3*	23MC4030	24MC4030	3.25	4.00	-	15	3.0
3-1/2*	23MC4034	24MC4034	3.37	4.62	-	10	4.1
4*	23MC4040	24MC4040	3.50	5.00	-	10	4.4
5*	23MC4050	24MC4050	3.75	6.29	-	4	7.2
6*	23MC4060	24MC4060	4.00	7.39	-	3	10.5

* Taper Tapped

Fig. 23HC & 24HC – Merchant Half Coupling



Size in	Part Number	A in	B in	Packing		Weight lb
				Inner	Master	
1/8	23HC4001	0.38	0.56	100	1200	0.01
1/4	23HC4002	0.57	0.71	100	1200	0.03
3/8	23HC4003	0.57	0.87	100	1200	0.05
1/2	23HC4004	0.75	1.06	50	600	0.08
3/4	23HC4006	0.79	1.31	50	400	0.1
1	23HC4010	1.00	1.57	30	240	0.1
1-1/4	23HC4012	1.03	1.90	20	160	0.2
1-1/2	23HC4014	1.03	2.20	20	160	0.3
2	23HC4020	1.06	2.75	20	80	0.5
2-1/2*	23HC4024	1.06	3.25	-	60	1.1
3*	23HC4030	1.56	4.00	-	24	1.5
3-1/2*	23HC4034	1.60	4.62	-	20	2.1
4*	23HC4040	1.80	5.00	-	20	2.2
5*	23HC4050	1.90	6.29	-	12	3.6
6*	23HC4060	2.00	7.39	-	8	5.2

* Taper Tapped

Fig. 26CRXA – API 5L Recessed Coupling



Size in	Part Number	A in	B in	Packing		Weight lb
				Inner	Master	
1/8	26CRXA001	1.06	0.56	25	400	0.04
1/4	26CRXA002	1.62	0.71	25	400	0.1
3/8	26CRXA003	1.62	0.87	25	400	0.1
1/2	26CRXA004	2.12	1.06	25	300	0.2
3/4	26CRXA006	2.12	1.31	25	200	0.3
1	26CRXA010	2.62	1.57	25	100	0.5
1-1/4	26CRXA012	2.75	2.05	25	50	0.9
1-1/2	26CRXA014	2.75	2.20	25	50	0.9
2	26CRXA020	2.87	2.87	-	40	1.7
2-1/2	26CRXA024	4.12	3.37	-	20	3.1
3	26CRXA030	4.25	4.00	-	12	3.8
4	26CRXA040	4.50	5.20	-	8	5.8
6	26CRXA060	4.87	7.39	-	3	13.5
8	26CRXA080	5.25	9.62	-	-	22.0

Fig. 23SP & 24SP – Square Head Plug

Size in	Part Number		A in	B in	Packing		Weight lb
	Black	Galvanized			Inner	Master	
1/8	23SP4001	24SP4001	0.57	0.27	-	2500	0.02
1/4	23SP4002	24SP4002	0.72	0.37	-	1000	0.04
3/8	23SP4003	24SP4003	0.80	0.42	-	600	0.06
1/2	23SP4004	24SP4004	0.97	0.55	-	300	0.1
3/4	23SP4006	24SP4006	1.07	0.62	-	200	0.2
1	23SP4010	24SP4010	1.25	0.81	-	100	0.3

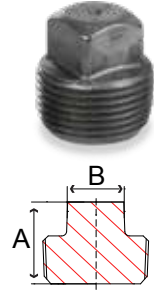


Fig. 23HP & 24HP – Hex Head Plug

Size in	Part Number		A in	B in	Packing		Weight lb
	Black	Galvanized			Inner	Master	
1/8	23HP4001	24HP4001	0.55	0.43	-	2000	0.02
1/4	23HP4002	24HP4002	0.74	0.56	-	900	0.05
3/8	23HP4003	24HP4003	0.80	0.68	-	600	0.07
1/2	23HP4004	24HP4004	0.97	0.87	-	300	0.1
3/4	23HP4006	24HP4006	1.06	1.06	-	150	0.3
1	23HP4010	24HP4010	1.10	1.31	-	100	0.5

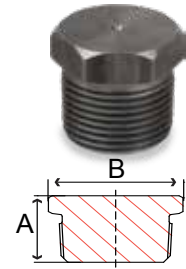


Fig. 23CS & 24CS – Countersunk Square Plug

Size in	Part Number		A in	B in	Packing		Weight lb
	Black	Galvanized			Inner	Master	
1/8	23CS4001	24CS4001	0.29	0.19	-	5000	0.01
1/4	23CS4002	24CS4002	0.44	0.25	-	1800	0.02
3/8	23CS4003	24CS4003	0.44	0.31	-	1100	0.03
1/2	23CS4004	24CS4004	0.59	0.38	-	500	0.07
3/4	23CS4006	24CS4006	0.60	0.50	-	300	0.1
1	23CS4010	24CS4010	0.75	0.50	-	150	0.2

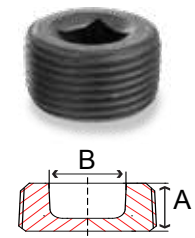


Fig. 23CH & 24CH – Countersunk Hex Plug

Size in	Part Number		A in	B in	Packing		Weight lb
	Black	Galvanized			Inner	Master	
1/8	23CH4001	24CH4001	0.29	0.18	-	5000	0.01
1/4	23CH4002	24CH4002	0.44	0.25	-	1800	0.02
3/8	23CH4003	24CH4003	0.44	0.31	-	1100	0.03
1/2	23CH4004	24CH4004	0.59	0.37	-	500	0.07
3/4	23CH4006	24CH4006	0.60	0.56	-	300	0.1
1	23CH4010	24CH4010	0.75	0.62	-	150	0.2

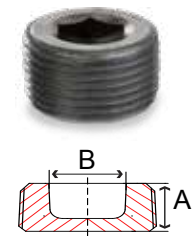


Fig. 23HB & 24HB – Hex Bushing

Size in	Part Number		A in	B in	Packing		Weight lb
	Black	Galvanized			Inner	Master	
1/4 x 1/8	23HB4002001	24HB4002001	0.63	0.62	100	500	0.03
3/8 x 1/8	23HB4003001	24HB4003001	0.66	0.68	100	500	0.05
3/8 x 1/4	23HB4003002	24HB4003002	0.66	0.68	100	500	0.05
1/2 x 1/8	23HB4004001	24HB4004001	0.80	0.87	50	500	0.1
1/2 x 1/4	23HB4004002	24HB4004002	0.80	0.87	50	500	0.1
1/2 x 3/8	23HB4004003	24HB4004003	0.80	0.87	50	500	0.1
3/4 x 1/8	23HB4006001	24HB4006001	0.94	1.06	50	500	0.2
3/4 x 1/4	23HB4006002	24HB4006002	0.94	1.06	50	500	0.2
3/4 x 3/8	23HB4006003	24HB4006003	0.94	1.06	50	500	0.2
3/4 x 1/2	23HB4006004	24HB4006004	0.94	1.06	50	500	0.2
1 x 1/8	23HB4010001	24HB4010001	1.00	1.31	50	500	0.3
1 x 1/4	23HB4010002	24HB4010002	1.00	1.31	50	500	0.4
1 x 3/8	23HB4010003	24HB4010003	1.00	1.31	50	500	0.4
1 x 1/2	23HB4010004	24HB4010004	1.00	1.31	50	500	0.4
1 x 3/4	23HB4010006	24HB4010006	1.00	1.31	50	500	0.4

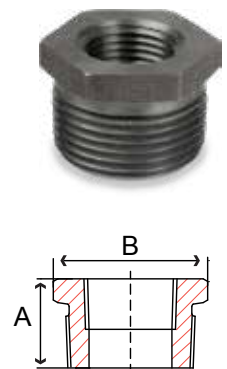
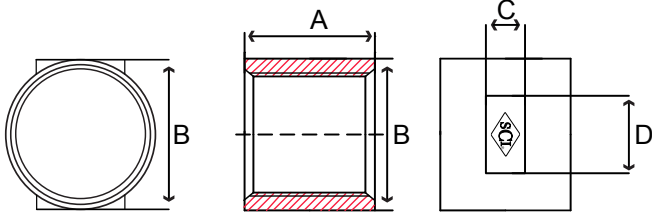


Fig. 29DC14 – 304 SS Recessed Drop Pipe Coupling



Size in	Part Number	A in	B in	C in	D in	Packing		Weight lb
						Inner	Master	
1	29DC14010	2.50	1.67	0.51	0.88	15	90	0.7
1-1/4	29DC14012	2.50	2.03	0.51	1.06	20	80	0.8
1-1/2	29DC14014	2.50	2.31	0.63	1.16	7	42	1.0
2	29DC14020	2.50	2.75	0.63	1.30	5	30	1.2



SCI ProPak™ System

**Order On-Line
at www.smithcooper.com**



Pipe & Sanitary Tubing
 Pipe, 304/304L & 316/316L
 SCH 10, 40 & 80
 WELDED & SEAMLESS 1/8" - 6"
 SANITARY TUBING 1" - 6"



SCI Branded Valves
 304/316/316L CAST
 200#, 800#, 1000#
 BALL, GATE, GLOBE & CHECK • 1/4" - 4"



Compression Fittings
 316 STAINLESS DOUBLE FERRULE
Instrumentation Tubing
 304/304L & 316/316L
 WELDED & SEAMLESS • 3/16" - 1"



150# Fittings
 304 & 316
 THREADED & SOCKET WELD
 1/8" - 4"



Nipples
 304L & 316L
 SCH 40 WELDED & SCH 80 SEAMLESS
 1/8" - 6" DIAMETER • CLOSE - ANY LENGTH



3000# Forged Fittings
 304L & 316L
 THREADED & SOCKET WELD
 1/8" - 4"



Weld Fittings
 304L & 316L SCH 10, 40 & 80
 1/2" - 6"



1000# Bar Stock
 304 & 316
 1/8" - 4"



Specialty Fittings
 316 KING COMBO NIPPLES
 WELD SPUDS
 HEX NIPPLES



Flanges
 304/304L & 316/316L
 150# & 300# • 1/2" - 6"



Sanitary Fittings
 304 & 316L
 CLAMP END & WELD END
 1/2" - 6"



Grooved Fittings & Pipe
 304L & 316L
 SCH 10 & SCH 40
 1" - 6"

About ASC Engineered Solutions

ASC Engineered Solutions is defined by quality—in its products, services and support. With more than 1,400 employees, the company’s portfolio of precision-engineered piping support, valves and connections provides products to more than 4,000 customers across industries, such as mechanical, industrial, fire protection, oil and gas, and commercial and residential construction. Its portfolio of leading brands includes ABZ Valve®, AFCON®, Anvil®, Anvil EPS, Anvil Services, Basic-PSA, Beck®, Catawissa, Cooplet®, FlexHead®, FPPI®, Gruvlok®, J.B. Smith, Merit®, North Alabama Pipe, Quadrant®, SCI®, Sharpe®, SlideLOK®, SPF® and SprinkFLEX®. With headquarters in Commerce, CA, and Exeter, NH, ASC also has ISO 9001:2015 certified production facilities in PA, TN, IL, TX, AL, LA, KS, and RI.



asc-es.com

Building connections that last™

