

Building connections that last™



# Series 3200

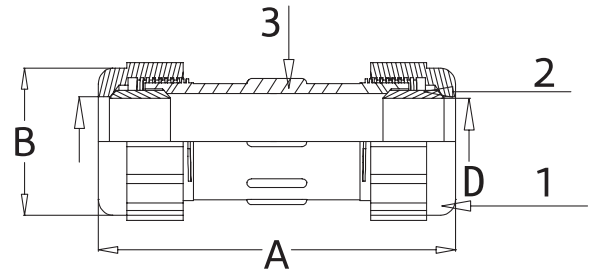
CPVC Compression Coupling



# CPVC Compression Coupling SCI® Series 3200

## Features

- Max. 100 psi @ 180° F
- Copper tube sizes
- Certified to NSF/ANSI 61 /Annex G Lead-Free



## Parts & Materials

No.	Part	Material
1	Nut	CPVC
2	Gasket	Rubber
3	Body	CPVC

## Dimensions

Size	Part Number	Weight LB	A - Inches	B - Inches	C - Inches	D - Inches
1/2	02943200G	0.2	4.60"	1.39"	0.68"	0.61"
3/4	02943200I	0.3	5.28"	1.87"	0.91"	0.85"



asc-es.com

Building connections that last™