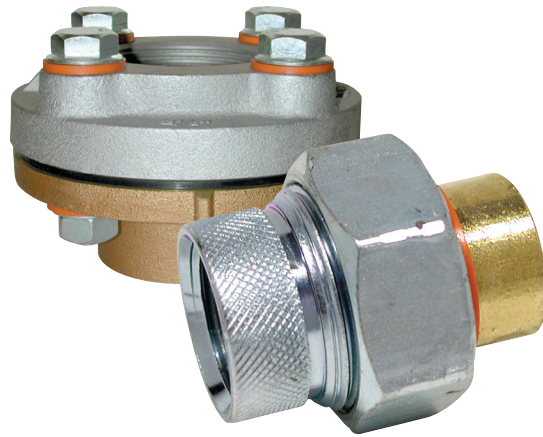
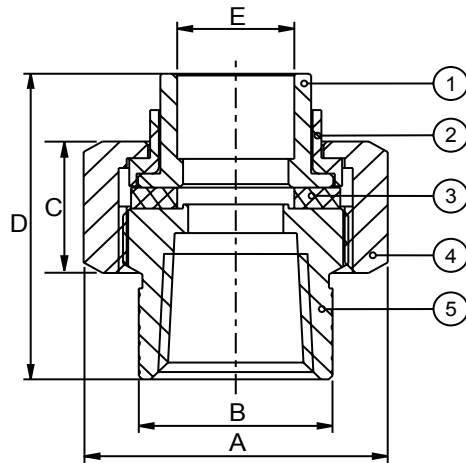


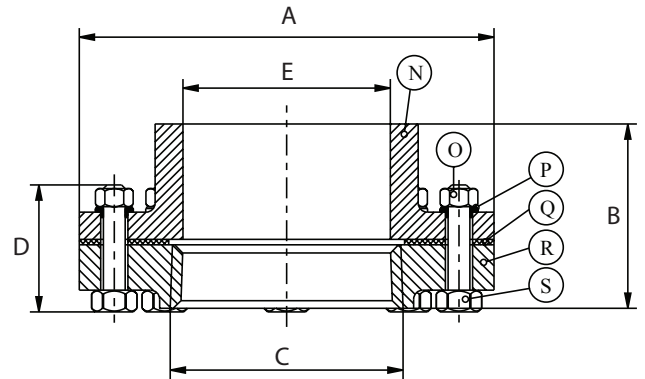
FEMALE IPS x BRASS SWEAT DIELECTRIC UNION



- Forged steel construction
- Prevents electrolysis
- Zinc plated
- Self-centering washer
- 2-1/2" - 4" are flange style
- Working Pressure: 250psi @ 73°F (23°C)



1/2" to 2"



2-1/2" to 4"

| No. | Part         | Material |
|-----|--------------|----------|
| 1   | Solder End   | Brass    |
| 2   | Insulator    | Nylon    |
| 3   | Washer       | EPDM     |
| 4   | Coupling Nut | Steel    |
| 5   | FIP Adapter  | Steel    |

| No. | Part              | Material                        |
|-----|-------------------|---------------------------------|
| 1   | Solder Connection | Brass ASTM B-124, C37700        |
| 2   | Nut               | Steel, AISI 1010                |
| 3   | Insulator         | Nylon + Fiberglass Grilon TV-3H |
| 4   | Washer            | EPDM                            |
| 5   | FIP Flange        | Cast Iron                       |
| 6   | Bolt              | Steel, AISI 1010                |

| Size IN | Part Number | Weight LB | A IN | B IN | C IN | D IN | E IN |
|---------|-------------|-----------|------|------|------|------|------|
| 1/2     | 0209FXG     | 0.30      | 1.45 | 1.04 | 0.77 | 1.81 | 0.63 |
| 3/4     | 0209FXI     | 0.43      | 1.64 | 1.26 | 0.78 | 2.05 | 0.88 |
| 1       | 0209FXK     | 0.59      | 1.85 | 1.54 | 0.86 | 2.28 | 1.13 |
| 1-1/4   | 0209FXL     | 0.86      | 2.56 | 1.86 | 0.88 | 2.54 | 1.37 |
| 1-1/2   | 0209FXM     | 1.42      | 2.95 | 2.15 | 0.97 | 2.70 | 1.63 |
| 2       | 0209FXN     | 2.67      | 3.76 | 2.58 | 1.11 | 3.08 | 2.13 |
| 2-1/2   | 0209FXP     | 13.22     | 6.00 | 3.03 | 2.88 | 3.88 | 2.63 |
| 3       | 0209FXQ     | 15.65     | 6.61 | 3.03 | 3.50 | 3.88 | 3.13 |
| 4       | 0209FXT     | 27.91     | 9.00 | 4.10 | 4.50 | 2.76 | 4.13 |

USA 800-766-0076

Fax 323-890-4456

www.smithcooper.com

Los Angeles, CA

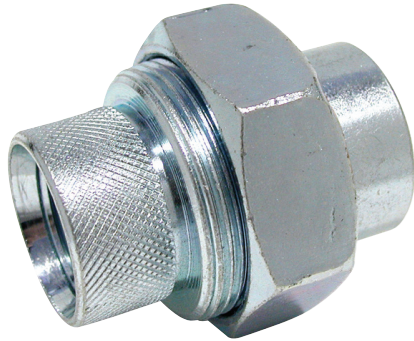
Chicago, IL

Atlanta, GA

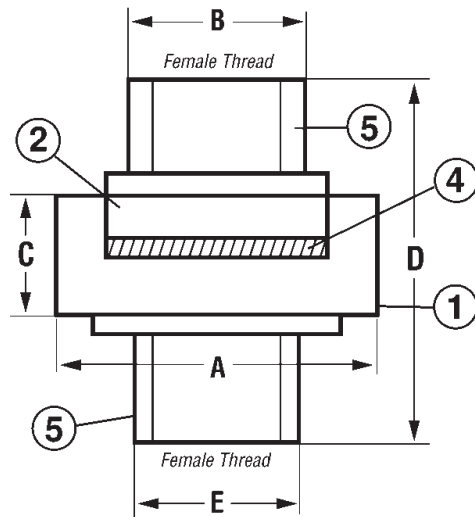
Vancouver, WA

Houston, TX

**FEMALE IPS x FEMALE IPS DIELECTRIC UNION**



- Forged steel construction
- Prevents electrolysis
- Zinc plated
- Self-centering washer
- Working Pressure: 250psi @ 73°F (23°C)



| No. | Part      | Material                        |
|-----|-----------|---------------------------------|
| 1   | Nut       | Forged Carbon Steel ASTM A 197  |
| 2   | Insulator | Nylon + Fiberglass Grilon TV-3H |
| 4   | Washer    | EPDM Rubber                     |
| 5   | FIP Inlet | Forged Carbon Steel ASTM A 197  |

| Size<br>IN | Part Number | Weight<br>LB | A<br>IN | B<br>IN | C<br>IN | D<br>IN | E<br>IN |
|------------|-------------|--------------|---------|---------|---------|---------|---------|
| 1/2        | 0209FFG     | 0.485        | 1.85    | 1.04    | 0.72    | 2.06    | 1.04    |
| 3/4        | 0209FFI     | 0.639        | 2.13    | 1.24    | 0.72    | 2.22    | 1.24    |
| 1          | 0209FFK     | 1.027        | 2.56    | 1.54    | 0.85    | 2.50    | 1.54    |

USA 800-766-0076

Fax 323-890-4456

www.smithcooper.com

Los Angeles, CA

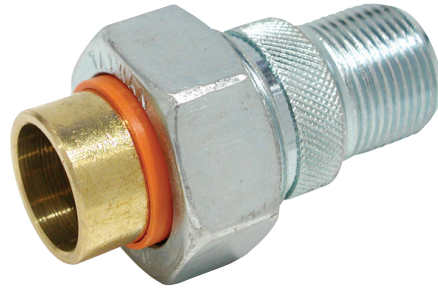
Chicago, IL

Atlanta, GA

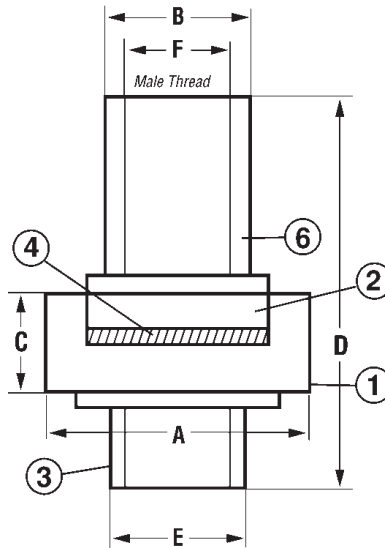
Vancouver, WA

Houston, TX

MALE IPS X BRASS SWEAT DIELECTRIC UNION



- Forged steel construction
- Zinc plated
- Prevents electrolysis
- Self-centering washer
- Working Pressure: 250psi @ 73°F (23°C)



| No. | Part         | Material                        |
|-----|--------------|---------------------------------|
| 1   | Nut          | Forged Carbon Steel ASTM A197   |
| 2   | Insulator    | Nylon + Fiberglass Grilon TV-3H |
| 3   | Solder Joint | Brass ASTM B-124, C37700        |
| 4   | Washer       | EPDM Rubber                     |
| 6   | MIP Inlet    | Forged Carbon Steel ASTM A197   |

| Size<br>IN | Part Number | Weight<br>LB | A<br>IN | B<br>IN | C<br>IN | D<br>IN | E<br>IN |
|------------|-------------|--------------|---------|---------|---------|---------|---------|
| 1/2        | 0209MXG     | 0.46         | 1.63    | 0.82    | 0.72    | 2.83    | 0.80    |
| 3/4x1/2    | 0209MXIG    | 0.568        | 1.85    | 1.02    | 0.72    | 2.75    | 0.80    |
| 1          | 0209MXK     | 0.577        | 1.85    | 1.02    | 0.72    | 2.92    | 1.04    |

USA 800-766-0076

Fax 323-890-4456

www.smithcooper.com

Los Angeles, CA

Chicago, IL

Atlanta, GA

Vancouver, WA

Houston, TX