

Building connections that last™



# Sharpe® Series SDC

Declutchable Manual  
Override Datasheet



## Declutchable Manual Override Sharpe® Series SDC



The Series SDC, declutchable manual override, is mounted between a quarter-turn valve & pneumatic actuator and allows manual operation of a valve if the actuator loses its air supply.

### Standard Operation

The Series SDC is “disengaged”, and the automated valve operates normally.

### Override at the Valve

If the valve's actuator loses its air supply, the user vents any pressurize air from the pneumatic actuator and “engages” the Series SDC. When properly sized and engaged, a valve can be opened or closed by rotating the SDC's handwheel.

### Design Features

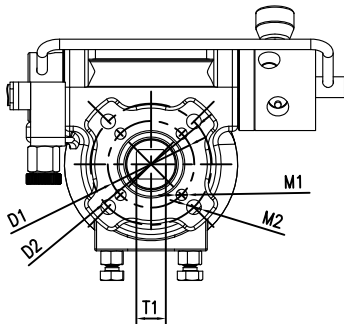
- Designed for all types of pneumatic rack and pinion actuators
- One piece body, solid weatherproof sealing
- Smooth and easy clutch – declutch mechanism
- Robust internals
- Self lubricated bearing for worm & gear
- 5 models available up to 35,400 lb-in torque
- Temperature range:  
–4 °F (–20 °C) to +176 °F (+80 °C)
- IP67 enclosure International Protection Rating:  
6 = Dust tight  
7 = Water immersion up to 1 m
- Stroke: 0–90° (+5° adjustable)
- WCB body surface treated by phosphating, epoxy & polyester coating
- Stainless Steel hardware
- ISO 5211 mounting standard
- Optional relief air shut off (RV)
- Optional lock out (LO)



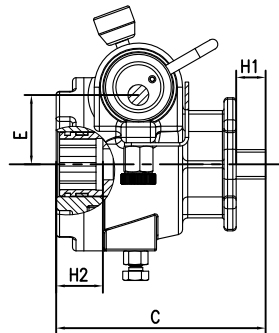
asc-es.com

Building connections that last™

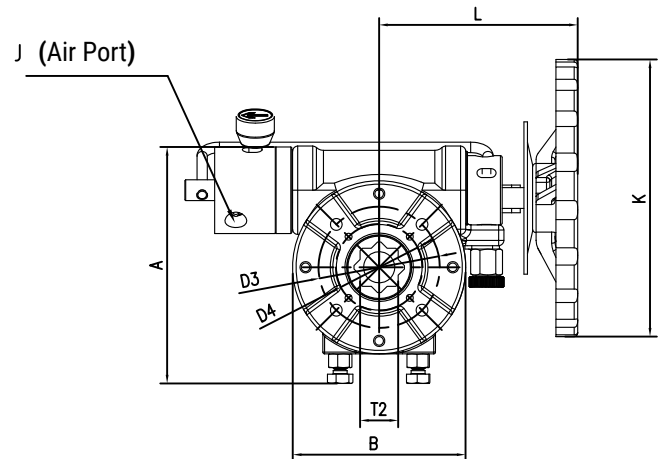
# Declutchable Manual Override Sharpe® Series SDC



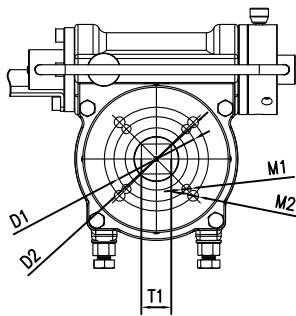
**Model SDC17**  
Top View



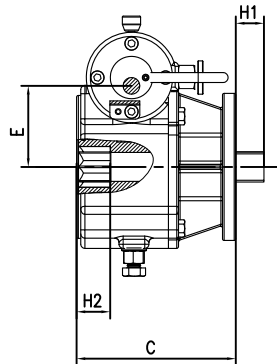
**Model SDC17**  
Side View  
(Top on Right)



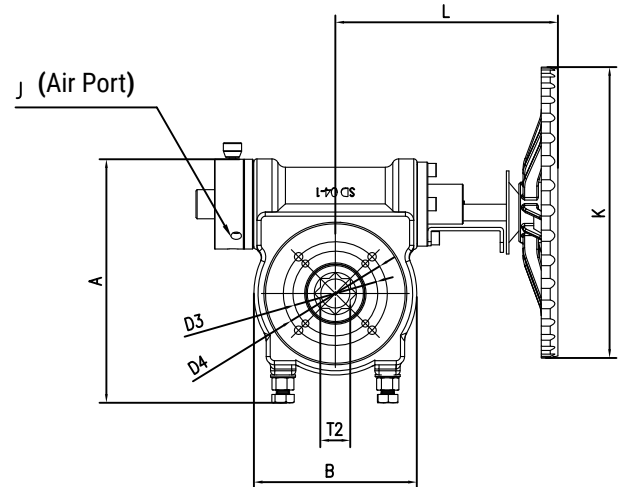
**Model SDC17**  
Bottom View



**Model SDC53 - SDC354**  
Top View



**Model SDC53 - SDC354**  
Side View  
(Top on Right)



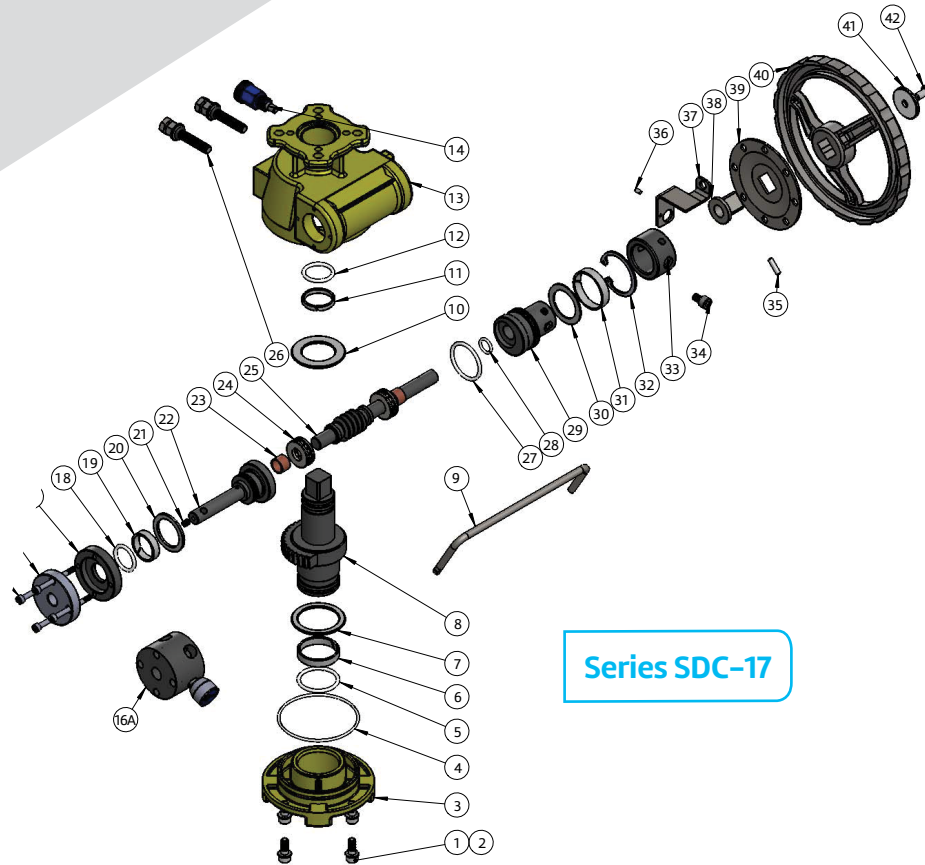
**Model SDC53 - SDC354**  
Bottom View

## Dimensions - (mm)

Model	A	B	C	D1	D2	D3	D4	E	L	M1	M2
SDC-17	120	100	104	F05	F07	F05	F07	44.5	120	4 x 7 mm	4 x 9 mm
SDC-53	192	148	145	F07	F10	F07	F10	71	175	4 x 9 mm	4 x 11 mm
SDC-106	192	148	145	F07	F10	F07	F10	71	181	4 x 9 mm	4 x 11 mm
SDC-177	260	196	192	F10	F12	F10	F12	107.5	272	4 x 11 mm	4 x 13 mm
SDC-354	334	255	181	F16	-	F12	F16	123	275	4 x 22 mm	-

Model	T1	T2	H1	H2	K	J	Actuators	Output Torque
SDC-17	□17	□17	14	25	φ 200	¼" NPT	SPN II 075~100	1700 lb-in
SDC-53	□22	□27	19	30	φ 200	¼" NPT	SPN II 100~145	5300 lb-in
SDC-106	□27	□27	19	30	φ 300	¼" NPT	SPN II 145~180	10,620 lb-in
SDC-177	□36	□36	34	40	φ 400	¼" NPT	SPN II 200~240	17,700 lb-in
SDC-354	□46	□46	45	50	φ 700	¼" NPT	SPN II 265~300	35,400 lb-in

# Declutchable Manual Override Sharpe® Series SDC

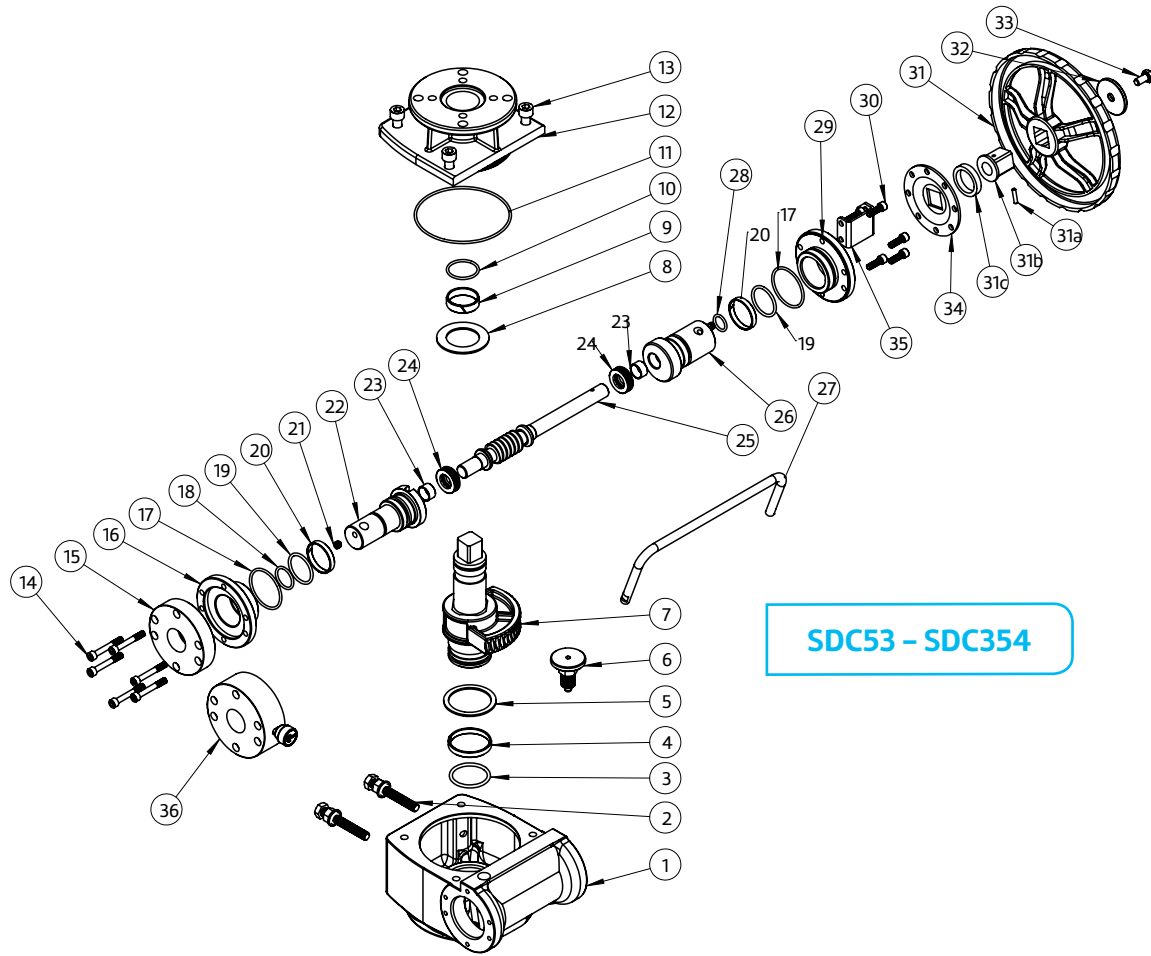


## Parts & Materials

No.	Part Name	Qty.	Material
1	Screw	4	304 SS
2	The Elastic Washer	4	304 SS
3	Cap	1	WCB
4	O Ring (Cap)	1	NBR
5	O Ring (Shaft)	1	NBR
6	Bearing (Shaft)	1	POM
7	Bearing (Shaft)	1	POM
8	Shaft	1	C45 Steel
9	Shift Handle	1	Steel + Cr
10	Bearing (Upper Shaft)	1	POM
11	Bearing (Upper Shaft)	1	POM
12	O Ring (Upper Shaft)	1	NBR
13	Body	1	WCB
14	Positioning Unit	1	AL
15	Screw (Left Cap)	4	304 SS
16	Cover Plate (Left Cap)	1	C45 Steel
16A	Air Shift Valve (Option)	1	AL
17	Left Cap	1	C45 Steel
18	O Ring	1	NBR
19	Bearing	1	POM
20	Bearing	1	POM
21	Bolt	2	304 SS

No.	Part Name	Qty.	Material
22	Left Eccentric Half Axle	1	C45 Steel
23	Bearing	2	Steel + PTFE
24	Thrust Ball Bearing	2	Steel
25	Worm Shaft	1	C45 Steel
26	Adjust Bolt	2	304 SS + NBR
27	O Ring (Right Axle)	1	NBR
28	O Ring	1	NBR
29	Right Eccentric Half Axle	1	C45 Steel
30	Bearing (Right Axle)	1	POM
31	Bearing (Right Axle)	1	POM
32	Circlip for Shaft	1	304 SS
33	Right Cap	1	C45 Steel
34	Screw (Right Cap)	1	304 SS
35	Cylindrical Pin	1	C20
36	Cylindrical Pin	1	C45 Steel
37	Lock Bracket	1	C15
38	The Adapter Sleeve	1	C45 Steel
39	Lock Disc	1	C15
40	Hand Wheel	1	DI / 20
41	Flat Washer	1	C15
42	Screw	1	304 SS

# Declutchable Manual Override Sharpe® Series SDC



## Parts & Materials

No.	Part Name	Qty.	Material
1	Body	1	WCB
2	Adjust Bolt	2	304 SS & NBR
3	O Ring (Shaft)	1	NBR
4	Bearing (Shaft)	1	POM
5	Bearing (Shaft)	1	POM
6	Positioning Unit	1	AL
7	Shaft	1	C45 Steel
8	Bearing (Upper Shaft)	1	POM
9	Bearing (Upper Shaft)	1	POM
10	O Ring (Upper Shaft)	1	NBR
11	O Ring (Cap)	1	NBR
12	Cover Cap	1	WCB
13	Screw (Cover Cap)	4	304 SS
14	Screw (Left Cap)	6	304 SS
15	Left Cap	1	C45 Steel
15A	Air Shift Valve	1	AL
16	Left Cap	1	C45 Steel
17	O Ring	2	NBR
18	O Ring (Left Axle)	1	NBR
19	O Ring (Left Axle)	2	NBR

No.	Part Name	Qty.	Material
20	Eccentric Axle Bearing	2	POM
21	Bolt	1	304 SS
22	Left Eccentric Half Axle	1	C45 Steel
23	Bearing	2	Steel + PTFE
24	Thrust Ball Bearing	2	Steel
25	Worm Shaft	1	C45 Steel
26	Right Eccentric Half Axle	1	C45 Steel
27	Shift Handle	1	Steel + Cr
28	O Ring (Right Axle)	1	NBR
29	Right Cap	1	C45 Steel
30	Screw (Right Cap)	6	304 SS
31	Hand Wheel	1	D1 / 20
31A	Cylindrical Pin	1	C20
31B	The Adapter Sleeve	1	C45 Steel
31C	Hand Wheel Washer	1	Steel + Zn
32	Flat Washer	1	C15
33	Bolt	1	304 SS
34	Lock Disc	1	C15
35	Lock Bracket	1	C15
36	Air Shift Valve (option)	1	AL

## How to order Sharpe® Series SDC

### SDC-177

Series		Option	
SDC-17	1700 lb-in		No Option - Leave Blank
SDC-53	5300 lb-in		
SDC-106	10,620 lb-in	RV	Relief Air Shut Off
SDC-177	17,700 lb-in	LO	Lock-Out*
SDC-354	35,400 lb-in		

**Note:**

\*POA.

Responsibility for proper selection, use and maintenance of any product remains solely with the purchaser and end user.

We reserve the right to modify or improve the designs or specifications of any product at any time without notice.



### **About ASC Engineered Solutions**

ASC Engineered Solutions is defined by quality—in its products, services and support. With more than 1,400 employees, the company’s portfolio of precision-engineered piping support, valves and connections provides products to more than 4,000 customers across industries, such as mechanical, industrial, fire protection, oil and gas, and commercial and residential construction. Its portfolio of leading brands includes ABZ Valve®, AFCON®, Anvil®, Anvil EPS, Anvil Services, Basic-PSA, Beck®, Catawissa, Cooplet®, FlexHead®, FPPI®, Gruklok®, J.B. Smith, Merit®, North Alabama Pipe, Quadrant®, SCI®, Sharpe®, SlideLOK®, SPF® and SprinkFLEX®. With headquarters in Commerce, CA, and Exeter, NH, ASC also has ISO 9001:2015 certified production facilities in PA, TN, IL, TX, AL, LA, KS, and RI.



[asc-es.com](http://asc-es.com)

Building connections that last™

FC-DS-Series-SDC-v02 20230306

