

Building connections that last™



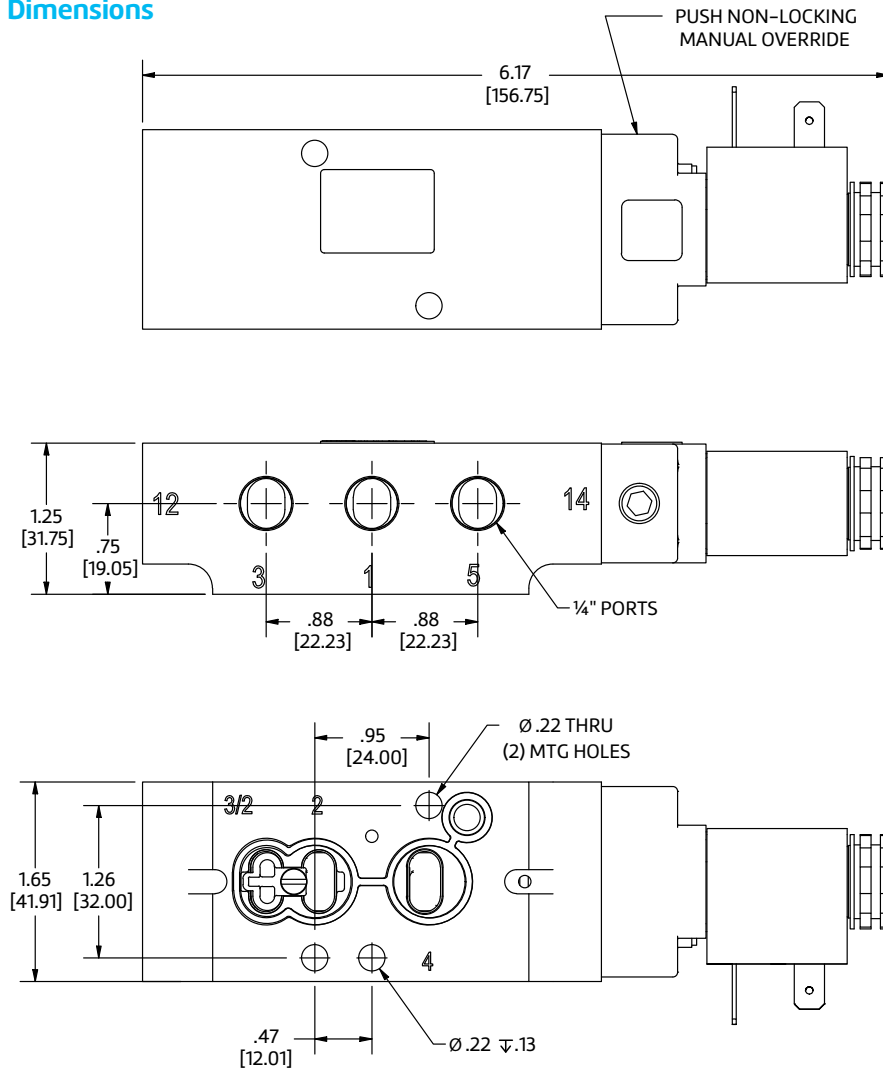
Sharpe® Solenoid Valves Datasheet





Model S2003ACWR7XX pictured above

Dimensions



Model S2003ACWR4XX shown above

Specifications

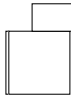
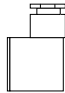
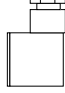
- 5-way 2-Position solenoid valve body can easily be converted to 3-way 2-position for spring return actuators.
- NAMUR mount aluminum body
- High flow: 1.8 Cv
- Same body accepts Type-4, Type-7 and ATEX coils.
- Manual override (Push / non-locking)
Optional: Locking manual override available.
- ¼" port size
- ½" conduit connection to coil
- Aluminum body
- NBR seals
- Coils are CSA certified to CSA/UL standards. Weather-Proof Type-4,4X.
Optional: CSA & FM Hazardous location type available.
- Five voltage options available.

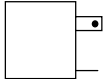
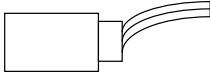
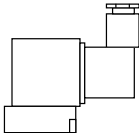


Standard solenoid connector
Type-4, 4X ½" Conduit without Cord

Connector & Coil Data

Parts & Materials

Type-4 Connectors Available (Not Polarity Dependent)		Connectors (Not Polarity Dependent)	
	Standard	Optional	Optional
DIN 43650 Industrial Form B			
		Maximum Cable Diameter: 9mm (0.35")	
Type	½" Conduit without Cord	Strain Relief with Light & 6' Cord	Strain Relief with Light & 6' Cord
		100 - 240VAC 48 - 120VDC 6-48 AC/DC	100 - 240VAC 48 - 120VDC 6-48 AC/DC

Coil Data				
Description		Lb.	Coil Replacement Part Number ** = Voltage	Note
Weather Proof Coil Class Code 4 DIN 43650 Industrial Form Connection		W	0.12	SC4** Coil and standard ½" conduit connector included. (See How to Order)
Explosion-Proof Coil Class Code 7 ½" Conduit with 24" Leads CSA & FM Approved CL. I; Zone1 Ex m II T4; AEx m II CL. I; Div.1; GR. A, B, C, D CL. II; GR. E, F, G CL. III T4 Ta=-20°C to +60°C		W	0.44	SC7** Coil provided with ½" conduit connection and 24" leads. (See How to Order)
Intrinsically-Safe Coil Class Code 1 Strain Relief Ex ia CL. I; GR. A,B,C,D CL. II; GR.E,F,G CL. III; Div.1; T5		V	0.46	SCI2D Coil and Connector included. (24VDC only)

Note:

** Insert voltage (see how to order)

SCI2D Must be used with an Intrinsically-Safe Barrier.

Electrical Information

Voltage Codes and Coil Information

Voltage Code	Operator Type Standard (W) Intrinsically Safe (V) Voltage +/-10%	Current (Amps)												
		Inrush				Holding				Resistance (OHMs @ 25°C)		Power (AC=VA, DC=Watts)		
		W		V		W		V		W	V	W	V	
		Type	ATEX	Type	ATEX	Type	ATEX	Type	ATEX	Type	ATEX	Type	ATEX	
		4, 4x	7,9	Ex ia	4, 4x	7, 9	Ex ia	4, 4x	Ex ia	4, 4x	7, 9	Ex ia		
12	22-24VAC 50/60Hz	.08	.10	-	.05	.05	-	840	530	-	6.9	6.5	-	
22	110-120VAC C50/60Hz	.04	.05	-	.03	.03	-	3310	2345	-	6.4	6.8	-	
2A	200-240VAC 50/60Hz	.36	-	-	.24	-	-	32	-	-	6.9	-	-	
1D	12 VDC	.38	.38	-	.38	.38	-	32	32	-	4.8	4.5	-	
2D	24 VDC	.20	.19	.05	.20	.19	.05	121	128	275	4.8	4.5	1.6	

How to order Sharpe Solenoid Valves

Example: The designation for a Sharpe Solenoid Valve, Left Port SR/DA, Hazardous location, 120vac with non-locking manual override: S2003ACWR712

S	2003A	CWR	-	7	12																																		
Actuator Port Type	Base Model	Coil / Location Type		Coil Class	Voltage	Manual Override	Options & Suffixes																																
<table border="1"> <thead> <tr> <th colspan="2">Actuator Port Type</th> </tr> </thead> <tbody> <tr> <td>S</td> <td>Left Port SR/DA Actuator Type</td> </tr> <tr> <td>X</td> <td>Right Port SR/DA Actuator Type</td> </tr> </tbody> </table>		Actuator Port Type		S	Left Port SR/DA Actuator Type	X	Right Port SR/DA Actuator Type	<table border="1"> <thead> <tr> <th colspan="2">Coil Location</th> </tr> </thead> <tbody> <tr> <td>C</td> <td>Left Side = (S)</td> </tr> <tr> <td>A</td> <td>Right Side = (X)</td> </tr> </tbody> </table>		Coil Location		C	Left Side = (S)	A	Right Side = (X)	<table border="1"> <thead> <tr> <th colspan="2">Coil Class</th> </tr> </thead> <tbody> <tr> <td>4</td> <td>Type-4,4x Non-Hazardous Standard Type (WR)</td> </tr> <tr> <td>7</td> <td>Type-7 Hazardous Standard Type (WR) (24VAC N/A)</td> </tr> <tr> <td>1*</td> <td>Intrinsically Safe Type-IS (VR) 24VDC only</td> </tr> </tbody> </table>		Coil Class		4	Type-4,4x Non-Hazardous Standard Type (WR)	7	Type-7 Hazardous Standard Type (WR) (24VAC N/A)	1*	Intrinsically Safe Type-IS (VR) 24VDC only	<table border="1"> <thead> <tr> <th colspan="2">Manual Override</th> </tr> </thead> <tbody> <tr> <td>No Code <blank></td> <td>Push / Non-Locking</td> </tr> <tr> <td>1</td> <td>Push / Turn-Locking</td> </tr> </tbody> </table>		Manual Override		No Code <blank>	Push / Non-Locking	1	Push / Turn-Locking	<table border="1"> <thead> <tr> <th colspan="2">Options & Suffixes</th> </tr> </thead> <tbody> <tr> <td>No Code <blank></td> <td>None</td> </tr> </tbody> </table>		Options & Suffixes		No Code <blank>	None
Actuator Port Type																																							
S	Left Port SR/DA Actuator Type																																						
X	Right Port SR/DA Actuator Type																																						
Coil Location																																							
C	Left Side = (S)																																						
A	Right Side = (X)																																						
Coil Class																																							
4	Type-4,4x Non-Hazardous Standard Type (WR)																																						
7	Type-7 Hazardous Standard Type (WR) (24VAC N/A)																																						
1*	Intrinsically Safe Type-IS (VR) 24VDC only																																						
Manual Override																																							
No Code <blank>	Push / Non-Locking																																						
1	Push / Turn-Locking																																						
Options & Suffixes																																							
No Code <blank>	None																																						
<table border="1"> <thead> <tr> <th colspan="2">Base Model</th> </tr> </thead> <tbody> <tr> <td colspan="2">2003A</td> </tr> </tbody> </table>		Base Model		2003A		<table border="1"> <thead> <tr> <th colspan="2">Coil Type</th> </tr> </thead> <tbody> <tr> <td>WR</td> <td>Standard (W) coil</td> </tr> <tr> <td>VR</td> <td>Intrinsically Safe (V) coil</td> </tr> </tbody> </table>		Coil Type		WR	Standard (W) coil	VR	Intrinsically Safe (V) coil	<table border="1"> <thead> <tr> <th colspan="2">Voltage</th> </tr> </thead> <tbody> <tr> <td>12</td> <td>120VAC</td> </tr> <tr> <td>22</td> <td>220VAC</td> </tr> <tr> <td>2A</td> <td>24VAC</td> </tr> <tr> <td>1D</td> <td>12VAC</td> </tr> <tr> <td>2D</td> <td>24VDC</td> </tr> </tbody> </table>		Voltage		12	120VAC	22	220VAC	2A	24VAC	1D	12VAC	2D	24VDC												
Base Model																																							
2003A																																							
Coil Type																																							
WR	Standard (W) coil																																						
VR	Intrinsically Safe (V) coil																																						
Voltage																																							
12	120VAC																																						
22	220VAC																																						
2A	24VAC																																						
1D	12VAC																																						
2D	24VDC																																						

Solenoid Valve to Actuator Type Selection

ASC Actuator Type	Brand	Series	Used With
S	ABZ	Series 227	50-270 [DA/SR]
		Series 228	10-3500 [DA/SR]
	QUADRANT	Series C	125-11000 [DA/SR]
	SHARPE	Series SPNII	50-300 [DA/SR]
X*	SHARPE	Series 4x4	X40 - X115

* Complete with 4x4 adapter plate.

Note: Responsibility for proper selection, use and maintenance of any product remains solely with the purchaser and end user. We reserve the right to modify or improve the designs or specifications of any product at any time without notice.

About ASC Engineered Solutions

ASC Engineered Solutions is defined by quality—in its products, services and support. With more than 1,400 employees, the company's portfolio of precision-engineered piping support, valves and connections provides products to more than 4,000 customers across industries, such as mechanical, industrial, fire protection, oil and gas, and commercial and residential construction. Its portfolio of leading brands includes ABZ Valve®, AFCON®, Anvil®, Anvil EPS, Anvil Services, Basic-PSA, Beck®, Catawissa, Cooplet®, FlexHead®, FPPI®, Gruvlok®, J.B. Smith, Merit®, North Alabama Pipe, Quadrant®, SCI®, Sharpe®, SlideLOK®, SPF® and SprinkFLEX®. With headquarters in Commerce, CA, and Exeter, NH, ASC also has ISO 9001:2015 certified production facilities in PA, TN, IL, TX, AL, LA, KS, and RI.



asc-es.com

Building connections that last™

FC-DS-Series-Solenoids-Valves-v08 20250408

