

Fig. HB1 Ultra SprinkFlex® Hose

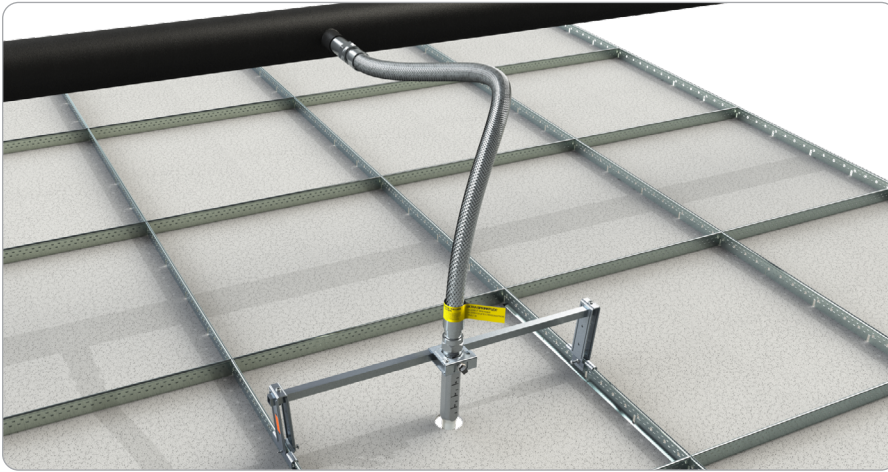


Fig. HB1 and HB1C Brackets

Bracket Fig # & Size	cULus Listed	FM Approved	SprinkFlex Historical Model Number
FH120. 24in NEW	✓	✓	-
FH120. 48in NEW		✓	-
FH150 NEW	✓	✓	-
BKT-IPT, 24in	✓	✓	IPT-24-BKT1
BKT-IPT, 48in		✓	IPT-48-BKT1
BKT-SFO-4, 24in	✓	✓	SFO24BKT1
BKT-SFO-4, 48in		✓	SFO48BKT1

Note: SprinkFlex Historical Model Numbers may be used to verify cULus Listings & FM Approvals.

Product Specifications

HB1 Standard Assembly*

28in	59in
40in	71in
48in	

*Comes standard with 7" Long Straight Drop and Threaded Inlet Nipple

HB1C Inlet Nipple Component

Elbow Fitting

Pressure Rating

UL: 175psi (1,205kPa)

FM: 175psi (1,205kPa)

Minimum Bend Radius

UL: 2.0in (50.8mm)

FM: 7.0in (177.8mm)

Ambient Temperature

225°F (107°C) Max

Material

304 Stainless Steel Hose, Carbon Steel Fittings

Features

- Modular design for custom installations
- No bend radius inspection required for cULus applications
- Pre-Installed Sprinkler Head option available upon request
- Every hose comes with an easy to identify Yellow Tag

Ordering

Specify figure number, length, outlet size, & description. Fig. HB1C Components sold separately.



PROJECT INFORMATION	APPROVAL STAMP
Project:	Approved
Address:	Approved as noted
Contractor:	Not approved
Engineer:	Remarks:
Submittal Date:	
Notes 1:	
Notes 2:	

Fig. HB1 Ultra SprinkFlex® Hose

Standard Assembly: HB1C Threaded Inlet & HB1C 7" Long Drop

Fig. HB1 Assembly cULus Listing per UL 2443 & FM Approval (Listing) per FM 1637

Outlet Size	Assembly Length	Equivalent Length				Max # of 90° Bends	
		UL		FM		UL	FM
	In	ft	m	ft	m	#	#
½ NPS	28	16	4.9	14.5	16.8	4	1
	40	20	6.1	20.8	6.3	5	2
	48	34	10.4	22.4	6.8	8	3
	59	44	13.7	31.4	9.6	10	3
	71	56	16.8	36.3	11.1	12	4
¾ NPS	28	15	4.6	14.4	4.4	4	1
	40	23	7	20.7	6.3	5	2
	48	34	10.4	22.3	6.8	8	3
	59	48	14.6	31.3	9.5	10	3
	71	56	16.8	36.2	11	12	4

1. HB1 Standard Assembly comes with the 1" NPT Threaded Inlet Nipple & 7" Long Straight Outlet Drop.
2. Equivalent Length of NPS 1 (DN25) Sch 40 Pipe.
3. Equivalent Lengths listed above assume the maximum number of 90° bends.
4. A 90° bend can be achieved with two 45° bends or three 30° bends.
5. UL & FM Equivalent Lengths are listed for installation with sprinklers with a maximum k-factor of 16.8.

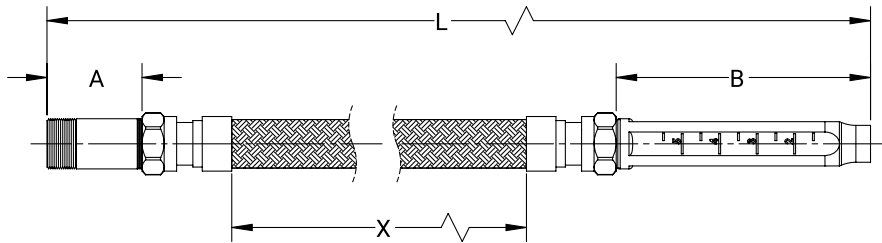


Fig. HB1 Standard Assembly Dimensions & Model Number

Assembly Length	True Length (L)		Braid Length (X)		Inlet Nipple Length (A)		Outlet Drop Length (B)		SprinkFlex Historical Model Number	
	In	mm	In	mm	In	mm	In	mm	½ NPS Outlet	¾ NPS Outlet
28	27.6	700	14.4	365					HB1-28-LDRP-H	HB1-28-LDRP-T
40	39.4	1000	25.4	644					HB1-40-LDRP-H	HB1-40-LDRP-T
48	47.2	1200	33.4	847	2.50	63.5	6.75	171.5	HB1-48-LDRP-H	HB1-48-LDRP-T
59	59.1	1500	45.4	1152					HB1-59-LDRP-H	HB1-59-LDRP-T
71	70.9	1800	57.4	1457					HB1-71-LDRP-H	HB1-71-LDRP-T



asc-es.com

Building connections that last™

Fig. HB1 Ultra SprinkFlex® Hose

Elbow Assembly: HB1C Threaded Inlet, HB1C Elbow Fitting, & HB1C 7" Long Drop

Fig. HB1 Assembly cULus Listing per UL 2443 & FM Approval (Listing) per FM 1637

Outlet Size	Assembly Length	Equivalent Length				Max # of 90° Bends	
		UL		FM		UL	FM
		ft	m	ft	m	#	#
½ NPS	28	18	5.5	18.5	5.6	4	1
	40	22	6.7	24.6	7.5	5	2
	48	36	11.0	26.4	8.0	8	3
	59	46	14.0	35.4	10.8	10	3
	71	-	-	40.3	12.3	12	4
¾ NPS	28	17	5.2	18.4	5.6	4	1
	40	25	7.6	24.5	7.5	5	2
	48	36	11.0	26.3	8.0	8	3
	59	48	15.0	35.3	10.8	10	3
	71	-	-	40.2	12.3	12	4

1. HB1 Assembly with the 1" NPT Threaded Inlet Nipple, 7" Long Straight Outlet Drop, & Elbow Fitting. HB1C Elbow Fitting sold separately and installed per Installation Instructions.
2. Equivalent Length of NPS 1 (DN25) Sch 40 Pipe.
3. Equivalent Lengths listed above assume the maximum number of 90° bends.
4. A 90° bend can be achieved with two 45° bends or three 30° bends.
5. UL & FM Equivalent Lengths are listed for installation with sprinklers with a maximum k-factor of 16.8.

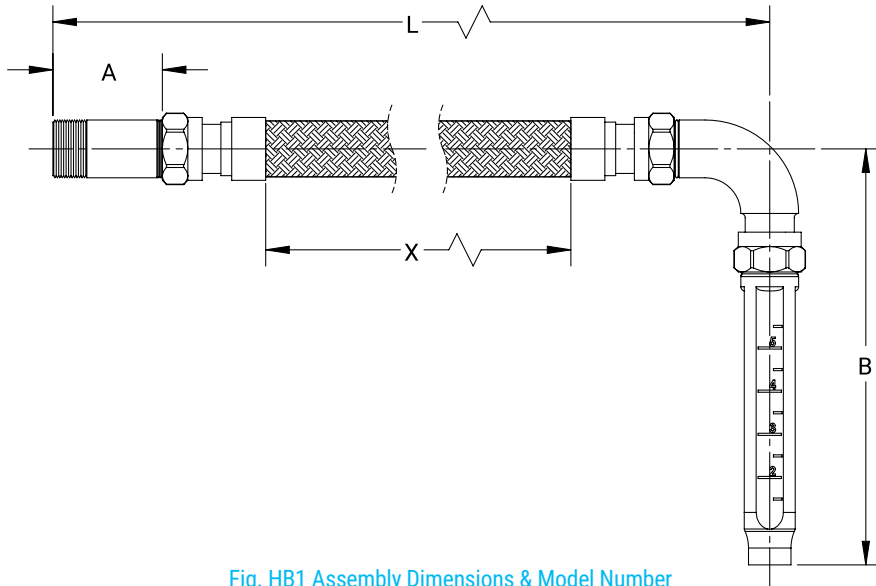


Fig. HB1 Assembly Dimensions & Model Number

Assembly Length	True Length (L)		Braid Length (X)		Inlet Nipple Length (A)		Outlet Drop Length (B)		SprinkFlex Historical Model Number	
	In	mm	In	mm	In	mm	In	mm	½ NPS Outlet	¾ NPS Outlet
28	23.0	585	14.4	365	-	-	-	-	HB1CE-28-LDRP-H	HB1CE-28-LDRP-T
40	34.8	884	25.4	644	-	-	-	-	HB1CE-40-LDRP-H	HB1CE-40-LDRP-T
48	42.6	1083	33.4	847	2.50	63.5	9.75	247.4	HB1CE-48-LDRP-H	HB1CE-48-LDRP-T
59	54.5	1385	45.4	1152	-	-	-	-	HB1CE-59-LDRP-H	HB1CE-59-LDRP-T
71	66.3	1685	57.4	1457	-	-	-	-	-	-

Ordering: HB1 Assembly with the desired hose length, HB1C Elbow Fitting



asc-es.com

Building connections that last™

Fig. HB1 Ultra SprinkFlex® Hose

Threaded Connection to the Branch (HB1C Threaded Inlet)

1. Separate the threaded inlet nipple (if necessary) from the flexible hose. Apply pipe sealant or tape to the NPT thread on the threaded inlet nipple and install into the branch outlet. **Note:** Only place the pipe wrench on the unthreaded portion of the inlet nipple.
2. Examine the O-ring in the threaded hex union attached to the end of the hose. Ensure it is seated properly and free of debris.
3. Ensure the arrow on the hose is pointing in the direction of flow. Tighten the threaded hex union at the end of the braided hose to the inlet nipple. Hand tight plus ½ turn (15ft-lbs).

Bending the Hose

1. The hose may be bent to ensure the inlet nipple and outlet drop are in the desired locations.
2. The hose should never be bent to a radius less than minimum listed bend radius. The bend radius is defined to the center of the hose.
3. The hose must have at least one 90° bend. A 90° bend can be achieved with two 45° bends or three 30° bends.
4. For best performance, the bends in the hose should be as large and smooth as possible.

Connection to the Bracket

1. Installation of the outlet drop to the bracket shall be per the bracket's installation instructions. The bracket shall be listed for installation with the HB1. See Page 1 for Listed and Approved brackets.
2. Examine the O-ring in the threaded hex union attached to the end of the hose. Ensure it is seated properly and free of debris.
3. Tighten the threaded hex union at the end of the braided hose to the outlet drop. Hand tight plus ½ turn (15ft-lbs).

Connection to the Sprinkler Head

1. Installation of the sprinkler head into the outlet drop shall be per the sprinkler manufacturer's installation instructions.

General Installation Notes

1. Never apply a wrench to the braided hose.
2. The Fig HB1 may be installed in any direction from the branch.
3. If installing a sprinkler to the hose after installation to the bracket, it is best practice to prevent twisting of the bracket and hose by holding the outlet drop with a wrench.



asc-es.com

Building connections that last™